

Bown Close  
Earl Shilton  
LE9 7SW

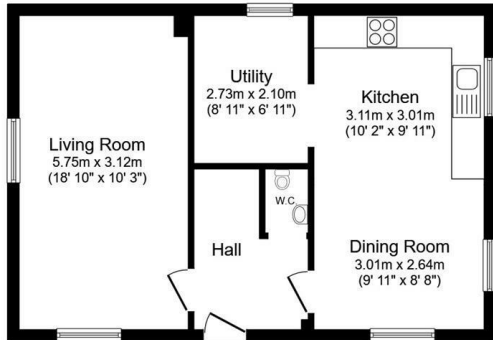
£1,450



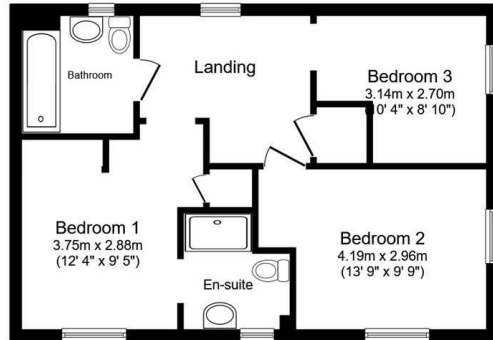
OSCAR JAMES

...expect excellence

# FLOOR PLANS



Ground Floor



First Floor



## AT A GLANCE...



custom text 1



custom text 4



custom text 2



custom text 5



custom text 3



custom text 6

Total floor area 99.2 sq.m. (1,067 sq.ft.) approx

This floor plan is for illustrative purposes only. It is not drawn to scale. Any measurements, floor areas (including any total floor area), openings and orientation are approximate. No details are guaranteed, they cannot be relied upon for any purpose and they do not form part of any agreement. No liability is taken for any error, omission or misstatement. A party must rely upon its own inspection(s). Powered by [www.focalagent.com](http://www.focalagent.com)



## WHAT'S GREAT?

A fantastic opportunity to rent this three-bedroom detached property, finished to a high standard throughout and ideally suited to modern family living.

Brand new build property located in the highly sought-after area of Bown Close, Earl Shilton. This charming three-bedroom detached house, completed in 2025, offers a perfect blend of modern living and comfort.

The property boasts a spacious and contemporary kitchen, fully fitted with a range of modern units and integrated appliances, offering both style and practicality. The bright and airy living spaces provide a comfortable setting for everyday living and entertaining.

Upstairs, the property comprises three well-proportioned bedrooms, all of which offer generous space and natural light, making them ideal for families, professionals, or those working from home. A modern family bathroom completes the first floor.

Externally, the property benefits from a private garden and off-road parking, enhancing its appeal

Offered fully furnished through Loft Furniture Collection at an additional rate pcm.

The property is managed by Touchstone Corporate Property Services who have received Landlord of the year awards.

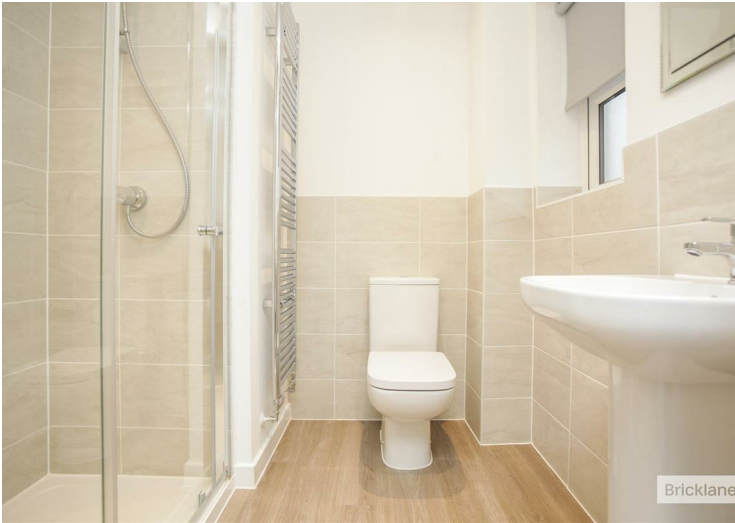
Pets will be considered for an extra charge per month.

Early viewing is highly recommended to appreciate the quality, location and li

...expect excellence



# SELLER'S SECRET



*Why we like it....*

# OSCAR JAMES

1 Newland Street | Kettering | NN16 8JH  
01536 415777  
[www.oscar-james.com](http://www.oscar-james.com)

*To buy or not to buy....*

---

---

---

---

---