



Guide Price
£700,000

Freehold

3x  2x  1x 

**Lagham Park, South
Godstone, Godstone,
Surrey, RH9**

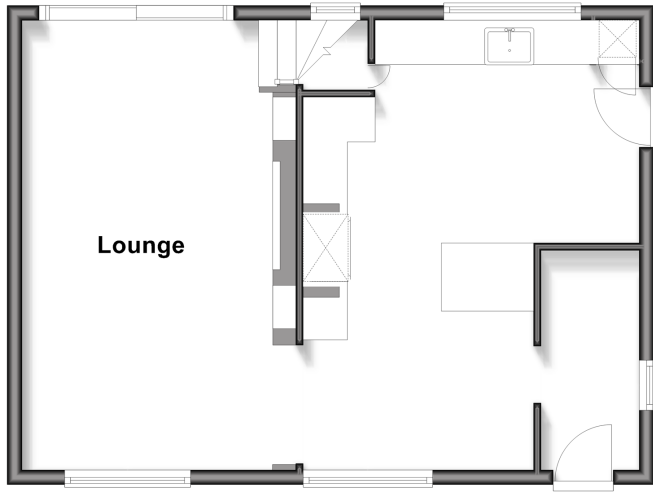
OVER 60?

Secure this property
for up to **59% less!**

cubitt & west
Helping you move forwards

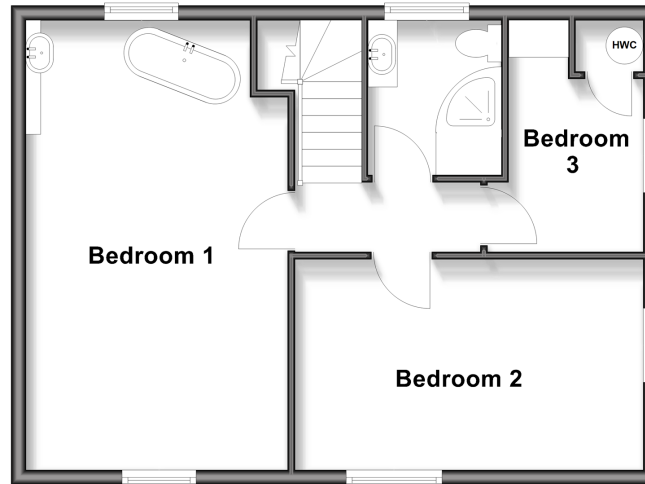
Ground Floor

Approx. 50.6 sq. metres (544.6 sq. feet)



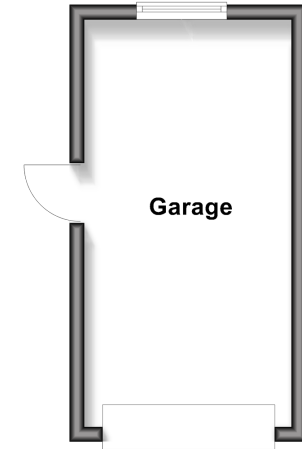
First Floor

Approx. 50.6 sq. metres (544.6 sq. feet)



Outbuilding

Approx. 15.4 sq. metres (165.8 sq. feet)



Accommodation

GROUND FLOOR

Entrance Hallway

Lounge: 22'8 x 20'10 (6.91m x 6.35m)

Kitchen: 14'11 x 10'10 (4.55m x 3.30m)

FIRST FLOOR

Landing

Bedroom 1: 19'11 x 11'8 (6.07m x 3.56m)

Bedroom 2: 15'3 x 9'11 (4.65m x 3.02m)

Bedroom 3: 9'11 x 6'11 (3.02m x 2.11m)

Family Bathroom

Front Garden

Rear garden

OUTBUILDING

Garage

OUTSIDE



Main features

- Chain Free
- Impressive principal Bedroom with boutique-style finish
- Completely refurbished to a high standard throughout, with beautiful timber and stone architectural touches
- Detached Garage for Parking or Storage
- Planning Permission obtained to extend ref no: 2024/809

Nearest Schools

Primary Schools: St Stephen's CofE Primary 0.4 miles, Godstone Village School 2.7 miles, St Catherine's Primary 3.5 miles

Secondary Schools: Moor House School 3.7 miles, St

Transport Information

Train Stations: Godstone 0.3 miles, Oxted 4.7 miles, Hurst Green 4.7 miles

Address

Lagham Park, South Godstone, Godstone, Surrey, RH9

Directions

For directions to this property please contact us.



cubitt&west
Helping you move forwards

Call Caterham Branch 01883 331000 ■ cubittandwest.co.uk



- Legal advice should be taken to verify fixtures/fittings, planning, alterations and/or lease details
- Appliances & services are untested, dimensions are approximate and floor plans are not to scale
- Through a Homewise Home For Life Plan people aged 60+ can secure this property for up to 59% less, by purchasing a Lifetime Lease



24408038/20260314/JE/DS