



1 Whinmoor Close, Prenton

Offers Over £585,000 Freehold

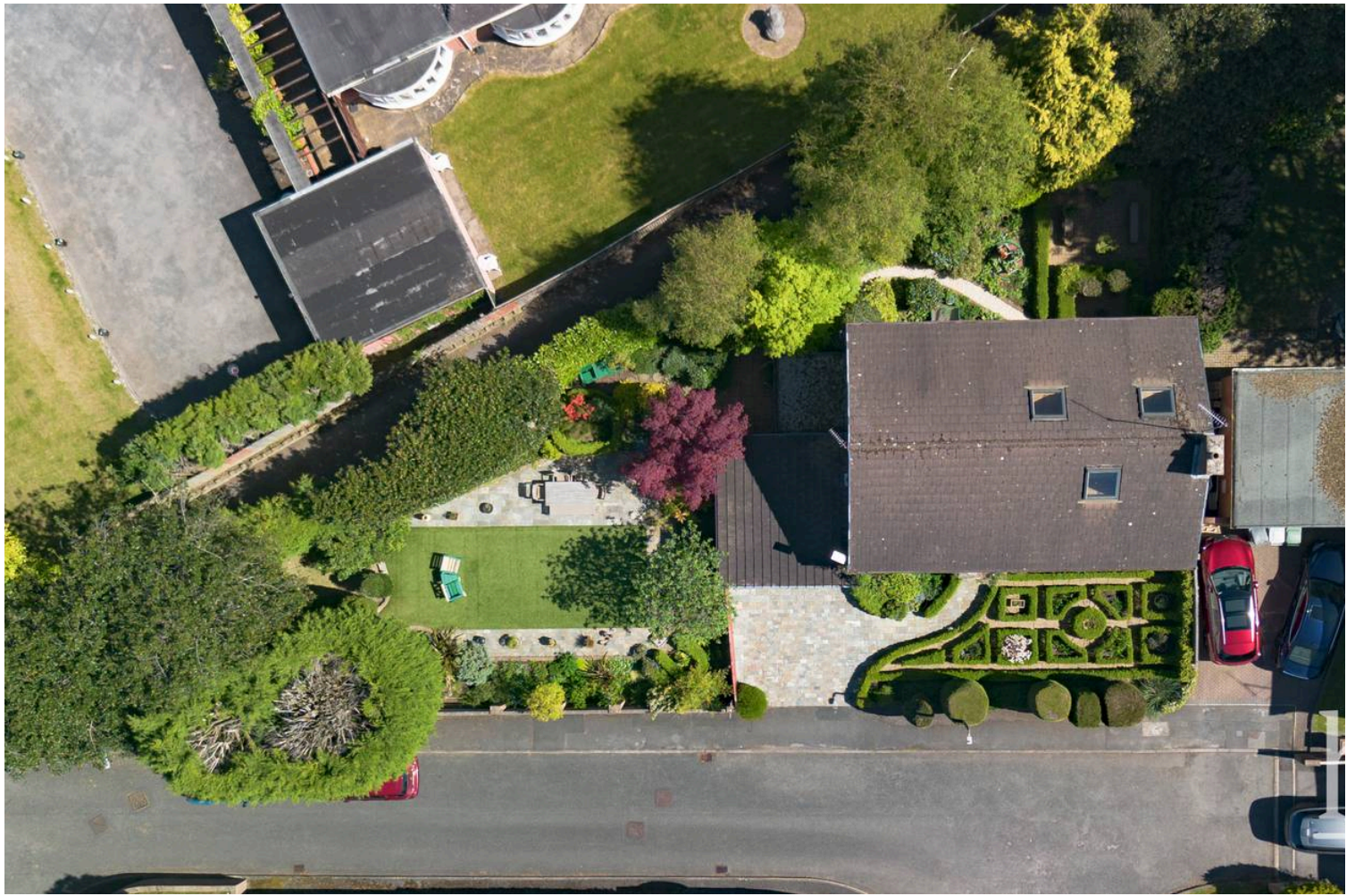


- Four Double Bedrooms
- Executive Detached Family Home
- Immaculately Presented Throughout
- Spacious Double Garage with Storage
- Indian Granite Block Paving to Driveway, Pathways, and Patio Areas
- Stunning Surround Gardens
- No Onward Chain
- Downstairs WC and En-Suite to Master
- Considerable Storage Available
- Situated in a Quiet Close

home

PROPERTY PARTNERS





Executive Family Home. Situated on the desirable Whinmoor Close, just off Vyner Road South in Noctorum, this beautifully presented four double bedroom detached home combines timeless style with thoughtful design, offering a true turn-key opportunity for families.

The interiors are finished to an exceptional standard throughout. The ground floor features imported German white oak wood flooring that flows seamlessly through the entrance hall, living room, dining room, and snug, with matching white oak skirting boards providing a refined touch. Upstairs, bamboo flooring enhances the landing and two front bedrooms, adding warmth and character.

At the heart of the home lies a stunning Neptune Henley kitchen, complete with Kashmir Gold granite worktops, matching marble splash-backs, and natural stone polished marble floor tiles that continue into the utility room. A five-plate induction hob with a removable handmade fused glass splashback adds both practicality and artistry to the space. Underfloor heating in the kitchen, utility, and ensuite bathroom ensures comfort and luxury year-round. Natural light is flooded in to both the living room and snug with bespoke floor to ceiling windows, added by the current owners. Ultraviolet protection film has been fitted to the downstairs windows in the living room, dining room, and snug, providing additional comfort and care.

The first floor is approached via a light and airy landing, which provides access to all four double bedrooms and the family bathroom, as well as the loft above. The principal bedroom is generously proportioned and benefits from its own ensuite bathroom, while the remaining three bedrooms are well-sized, offering flexibility for children, guests, or a home office. The stylish family bathroom is centrally positioned for convenience, and the landing itself adds to the sense of space and openness on this level, with loft access neatly tucked away above. Practicality meets space with a loft space offering wall-to-wall wood laminate flooring and three Velux windows – a versatile area with shelving, ideal for organised storage.



Externally, the home is equally impressive. The southwest-facing position ensures excellent natural light throughout the day, particularly across the side garden. Indian granite block paving creates an elegant approach, continuing into the side patio and paths that frame the low-maintenance artificial lawn. The landscaped gardens wrap around three sides of the property, featuring a woodland section with mature trees, well-stocked floral borders, geometric box hedging, and a fern collection. A second rear patio with a herb garden, and a raised seated log house offer further space to relax or entertain. Privacy is enhanced by trees and holly edges, while triple galvanized iron gates in decorative black and gold add distinction and security.

Completing the property is a spacious double garage with an electric door, side window, and extensive fitted shelving reaching to full ceiling height. In addition, there is accessible street parking for residents and guests alike.

Location:

The property sits off arguably one of the most prestigious roads on the west side of the Wirral. Within walking distance of the highly regarded Birkenhead School and within close proximity to St. Anselms College and Upton Convent School, you also benefit from picturesque, woodland walks with Bidston Hill being a stone throw away. The highly regarded Wirral Golf Club also sits just walking distance from the property and excellent bus routes through to Liverpool for professional commuters. An ideal area for growing families.

