



ENDLESS STREET SALISBURY SP1
£2,400 PER MONTH AVAILABLE NOW

Hamptons
THE HOME EXPERTS

{ THE PARTICULARS

Endless Street Salisbury SP1

£2,400 Per Month
Unfurnished

 5 Bedrooms
 2 Bathrooms
 2 Receptions

Features

- Period five bedroom home, - Located in the heart of the City, - Spacious and beautifully presented accommodation, - Private courtyard garden

Council Tax

Council Tax Band F

Hamptons
54 Castle Street
Salisbury, SP1 3TS
01722 480115
salisburylettings@hamptons.co.uk
www.hamptons.co.uk

{ OUTSTANDING HOME IN THE HEART OF THE CITY

The Property

This wonderful five bedroom home is situated in the heart of the Cathedral City of Salisbury. Set over four floors and offering beautifully presented and spacious accommodation, the property also benefits from an attractive and private courtyard garden to capture the best of the sunshine. The accommodation comprises to the ground floor: entrance hall, attractive dining room with sash windows and opening on to the kitchen breakfast room which is attractively presented and opens on to the courtyard garden, a utility room and a cloakroom. The first floor has a spacious sitting room with fabulous period features and a fireplace (not working) and a well appointed study/bedroom five. The second floor comprises a primary bedroom with en-suite shower room, and a smaller bedroom together with the newly fitted family bathroom with a bath, shower, wash hand basin and WC. The third floor has two further bedrooms. Externally the courtyard garden has mature planting and plenty of space for a large table. An allocated space in a private car park opposite the house is currently available.

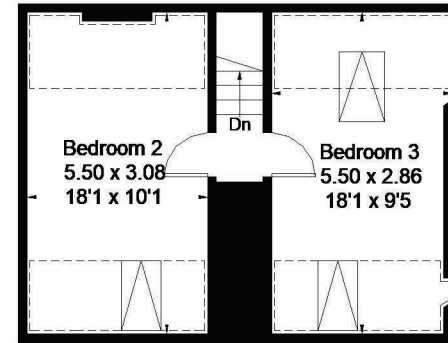
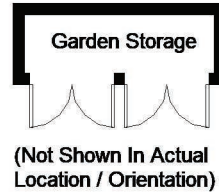


Endless Street, Salisbury

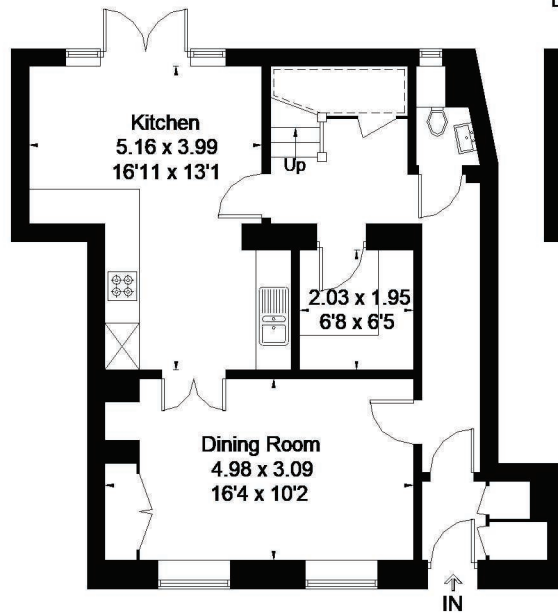
Approximate Gross Internal Area = 215.4 sq m / 2318 sq ft
 (Excluding Void)
 Garden Storage = 3.2 sq m / 34 sq ft
 Total = 218.6 sq m / 2352 sq ft



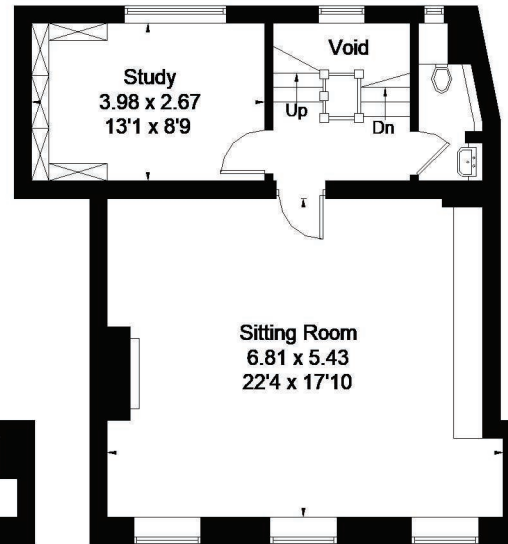
= Reduced headroom below 1.5m / 5'0"



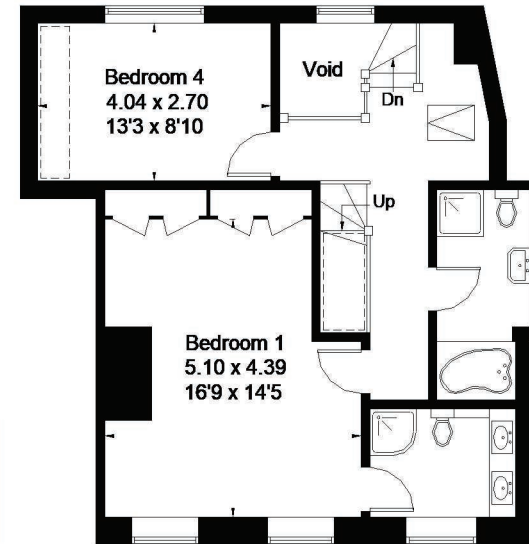
Third Floor



Ground Floor



First Floor



Second Floor

FLOORPLANZ © 2018 0203 9056099 Ref: 211927

This plan is for layout guidance only. Drawn in accordance with RICS guidelines. Not drawn to scale unless stated. Windows & door openings are approximate. Whilst every care is taken in the preparation of this plan, please check all dimensions, shapes & compass bearings before making any decisions reliant upon them.

For Clarification

We wish to inform prospective tenants that we have prepared these particulars as a general guide and they have been confirmed as accurate by the landlord. We have not verified permissions, nor carried out a survey, tested the services, appliances and specific fittings. Room sizes are approximate and measurement figures rounded: they are taken between internal wall surfaces and therefore include cupboards/shelves, etc. Accordingly, they should not be relied upon for

carpets and furnishings. It should also be noted that all fixtures and fittings, carpeted, curtains/blinds, kitchen equipment and garden statuary, whether fitted or not, are deemed removable by the landlord unless specifically itemised with these particulars. Please enquire in office or on our website for details on holding deposit and tenancy deposit figures.

