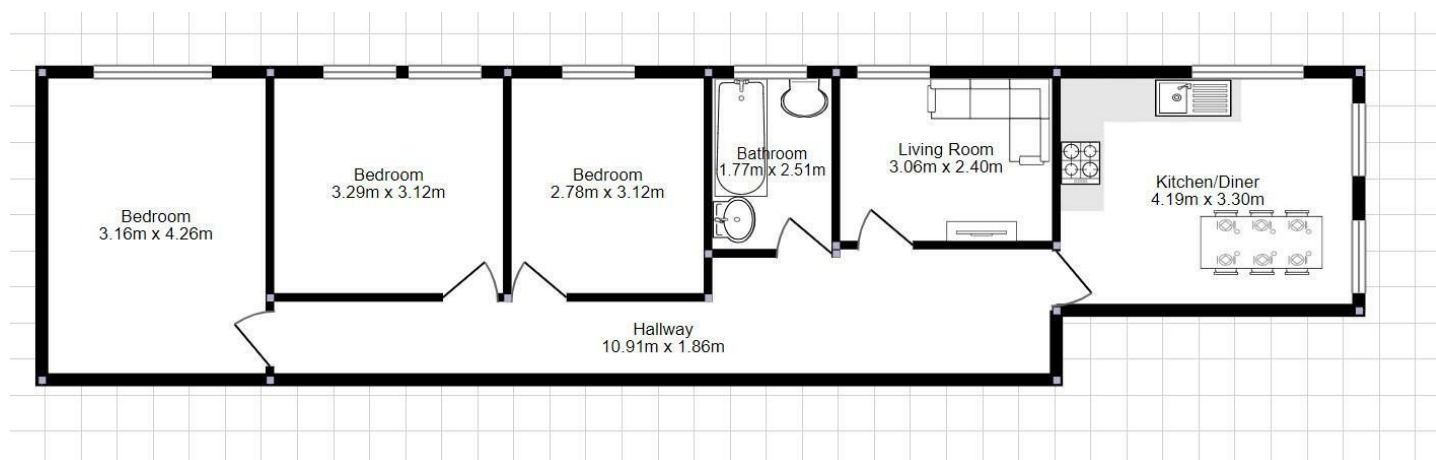
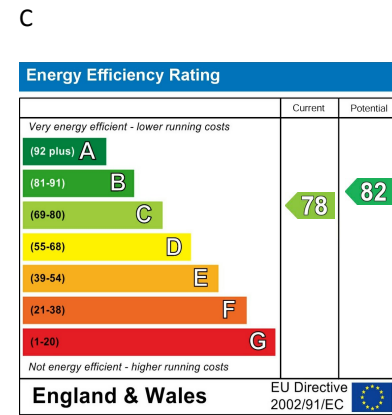


Directions

Viewings

Viewings by arrangement only. Call 02087436444 to make an appointment.

EPC Rating



Flat 21 West Kensington Court Edith Villas, London, W14 9AA

£4,490 Per Month

- Quiet Area
- Recently Refurbished
- Modern Interior
- Next to Station

Flat 21 West Kensington Court Edith Villas, London

W11 0AA

Ideal Professional Sharers or a Family Four Bedrooms Open Plan Kitchen and Reception Room Modern and Stylish Great Location Gas/Heating Included Multiple Transport Links.

This bright and spacious property is an ideal home for a family or professional sharers. This property has just been renovated and everything is recently refurbished. Being on the rear side of the building keeps the main road noise away for a peaceful night's sleep.

The property has a large reception room with an open plan kitchen with appliances, four bedrooms, a bathroom. The property is offered to the market furnished or unfurnished and is available from September 2026.

West Kensington Court is ideally located and makes it convenient to access the range of shops, bars, and restaurants that Kensington has to offer, as well as the other excellent transport links that are located throughout the borough.

Shops, bars, and restaurants are a stone's throw away. The idyllic Holland Park and Hyde Park are a few minutes' walk away.



Council Tax Band: E

