



CPR Certificate Not Signed

Guide Price

£250,000

Leasehold

2x  1x  1x 

Rams Grove, Romford,  
Essex, RM6

**OVER 60?**

Secure this property  
for up to **59% less!**

 **DOUGLAS  
ALLEN**  
Helping you move forwards

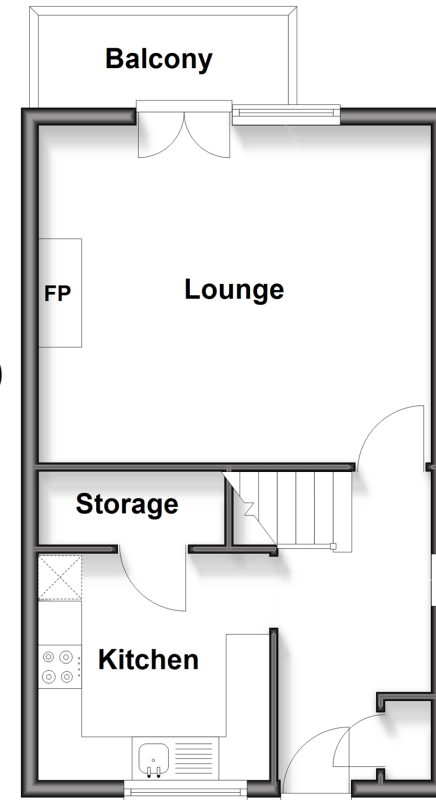


## Main features

- Spacious split level flat
- Own balcony & garden
- Modern fitted kitchen
- First floor bathroom
- Communal parking
- Bus & road links to Newbury Park & Chadwell Heath stations

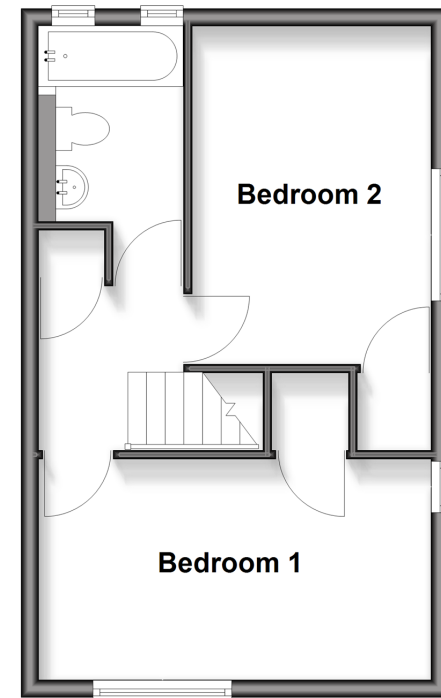
### Ground Floor

Approx. 34.2 sq. metres (368.0 sq. feet)



### First Floor

Approx. 34.2 sq. metres (368.0 sq. feet)



## Accommodation

### GROUND FLOOR

Entrance Hall

Lounge: 14'9 x 12'8 (4.50m x 3.86m)

Kitchen: 8'9 x 8'6 (2.67m x 2.59m)

Balcony

### FIRST FLOOR

Landing

Bedroom 1: 12'7 x 9'3 (3.84m x 2.82m)

Bedroom 2: 14'9 x 8'6 (4.50m x 2.59m)

Bathroom

### OUTSIDE

Garden

Call Chadwell Heath - 020 8597 0043 ■ [douglasallen.co.uk](http://douglasallen.co.uk)

- A private rental licensing scheme applies to some properties in this area, please check with the Local Authority before proceeding
- Through a Homewise Home For Life Plan people aged 60+ can secure this property for up to 59% less, by purchasing a Lifetime Lease



50714413/20260404/CN/MH