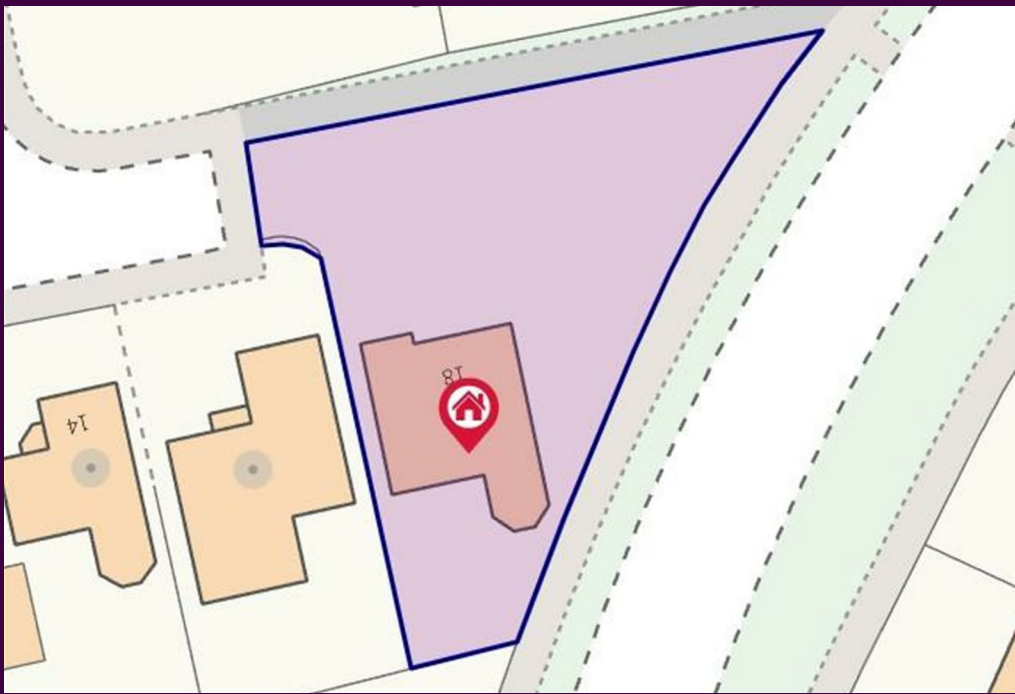


Garmon Close, Ingleby Barwick

£305,000

IH INGLEBY HOMES





This impressive four bedroom detached property sits on an unusually generous plot, presenting a rare purchase opportunity.

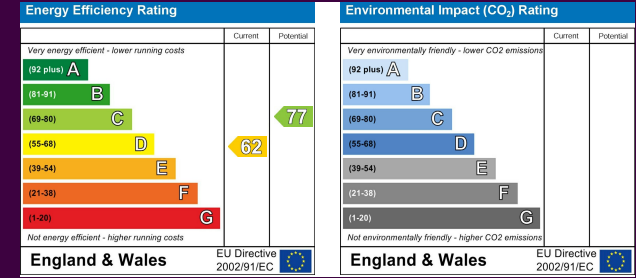
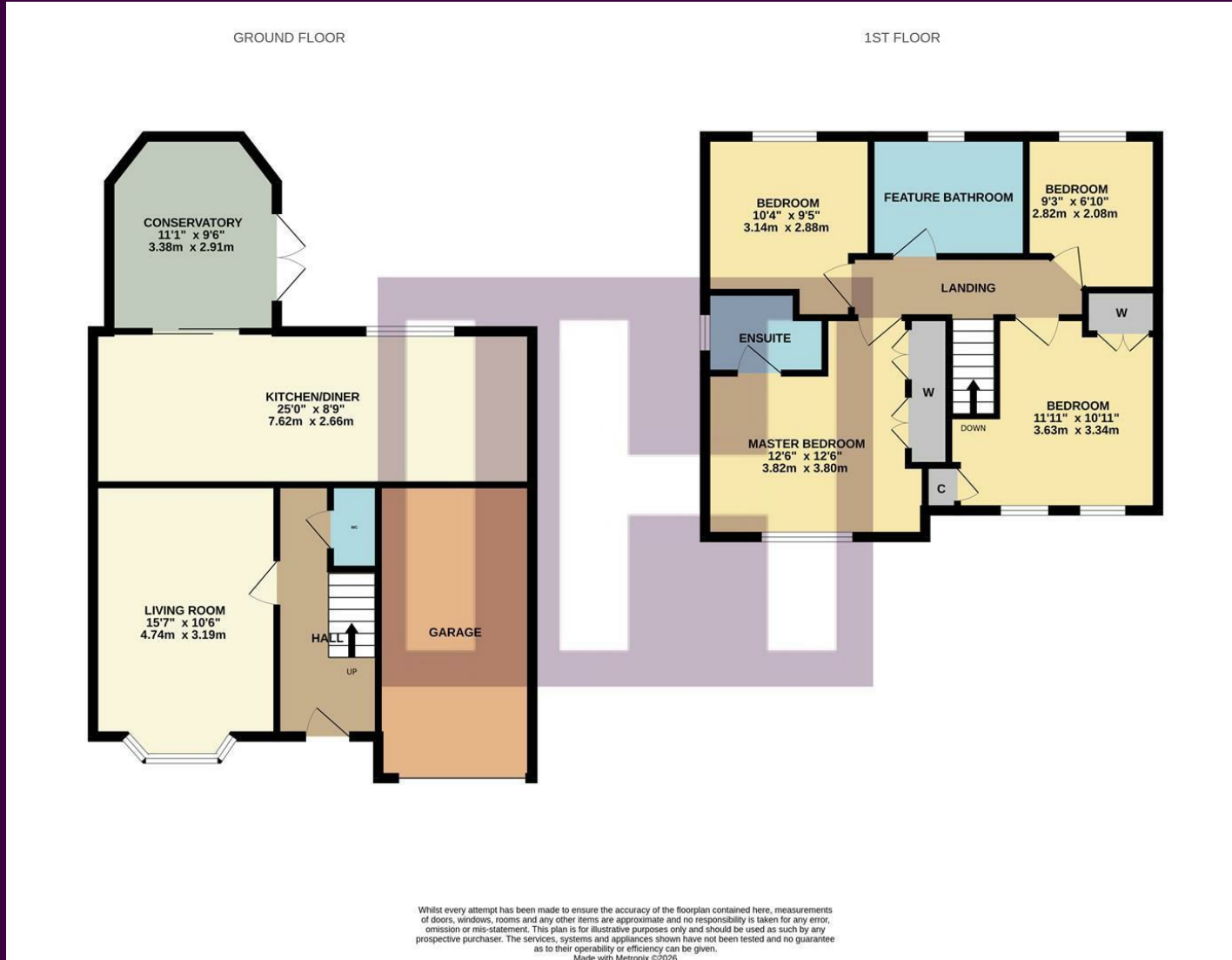
Boasting an extensive block-paved drive that can accommodate numerous vehicles and approaching the integral garage. The front being landscaped with established shrubs and greenery, separated by mature hedging to the lawned side garden, which itself is especially private and surrounded by enclosing greenery. Following around you find the private side space, laid to a modern composite deck, with a hot-water outdoor shower that the owner had installed to benefits the previously in-place hot-tub, along with a timber shed and summer house. The deck continues around to the rear meeting a patio, with the rear garden laid mainly to lawn, with established shrubs bordering.



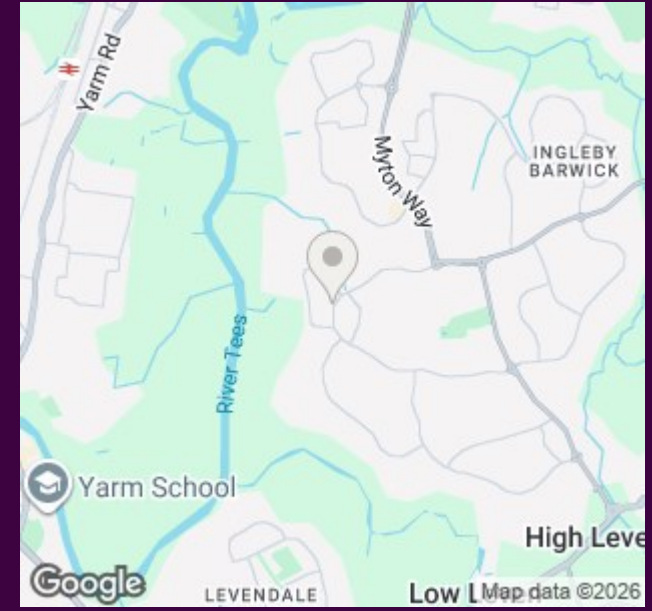
Internally, the ground floor accommodation comprises an entrance hall with replaced 'Glass & Oak' stair feature, a spacious independent lounge, cloakroom/WC, an impressive open-plan kitchen/diner with quality kitchen range and granite surfaces, stable rear door, with conservatory off.

The first floor is home to the superb refitted, and stylish family bathroom - complete with built-in TV, along with four bedrooms, the two larger enjoying fitted robes, one being the 'Master' with ensuite.

The Layout

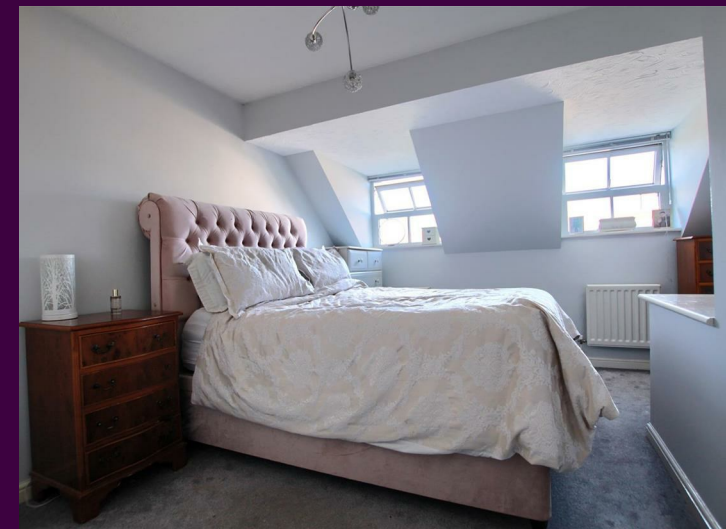


The Location

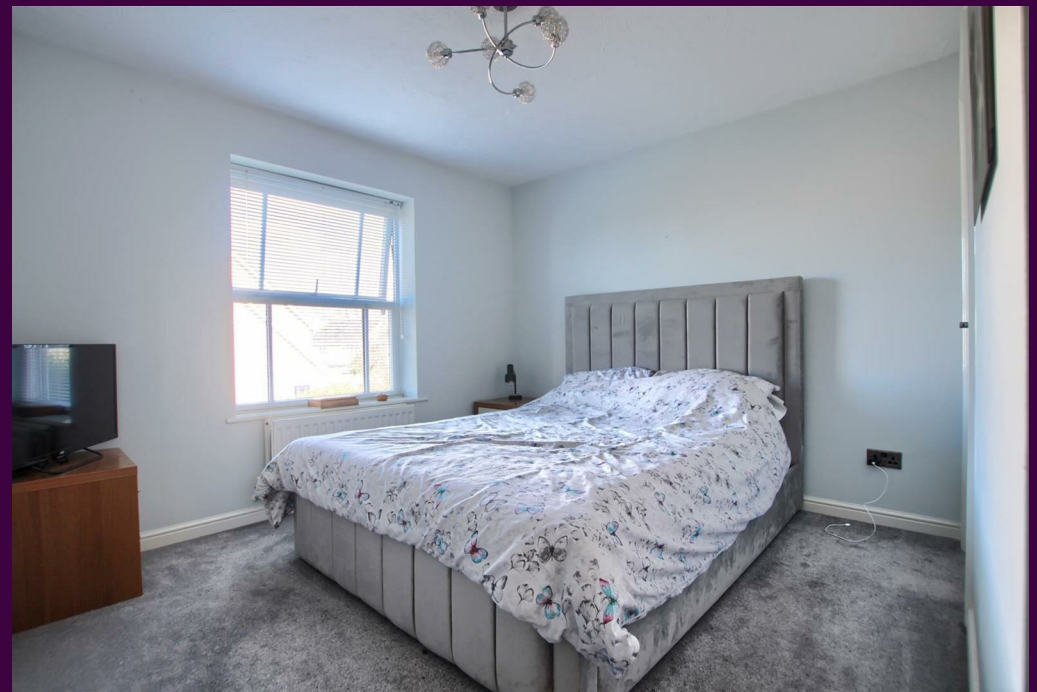


Council Tax Band:
Tenure:

D
Freehold



- Extensive plot with wrap around front, rear and generous side gardens
- Favoured 'Round Hill' location, ideal for local schooling
- Large multi-vehicle' block-paved drive with turning point
- Impressive open-plan kitchen/diner
- Stylish refitted family bathroom with built-in tv
- Four bedrooms, 'Master' with robes and ensuite



www.ingleby-homes.co.uk
01642 671025

IH INGLEBY HOMES