



## 25 Neapolitan House Joseph Terry Grove, York

In Excess of £325,000



# 25 Neapolitan House Joseph Terry Grove

York

Stylish two-bed, two-bath flat in South Bank, York, with open plan living, balcony, parking, communal gardens, secure entry, and close to shops, cafes, schools, and York Racecourse.

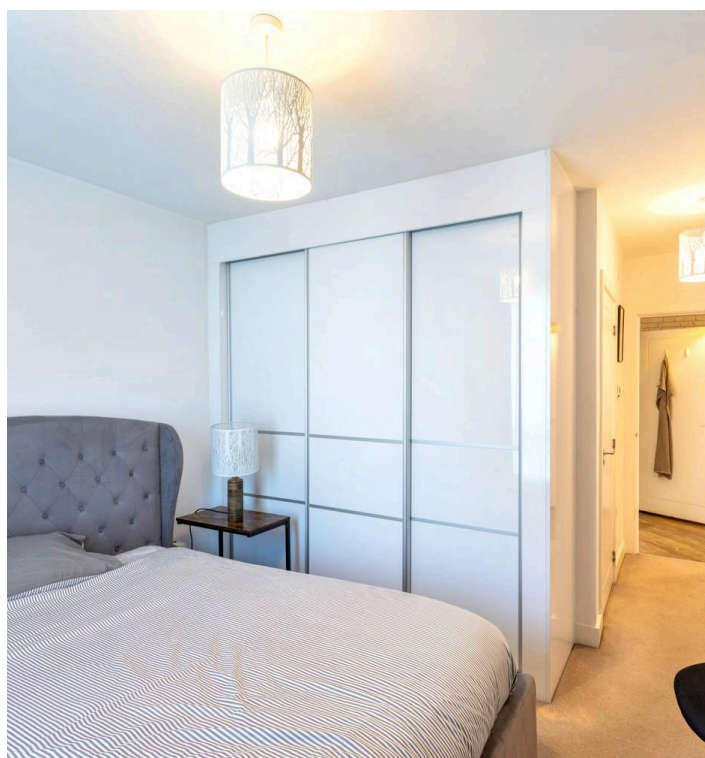
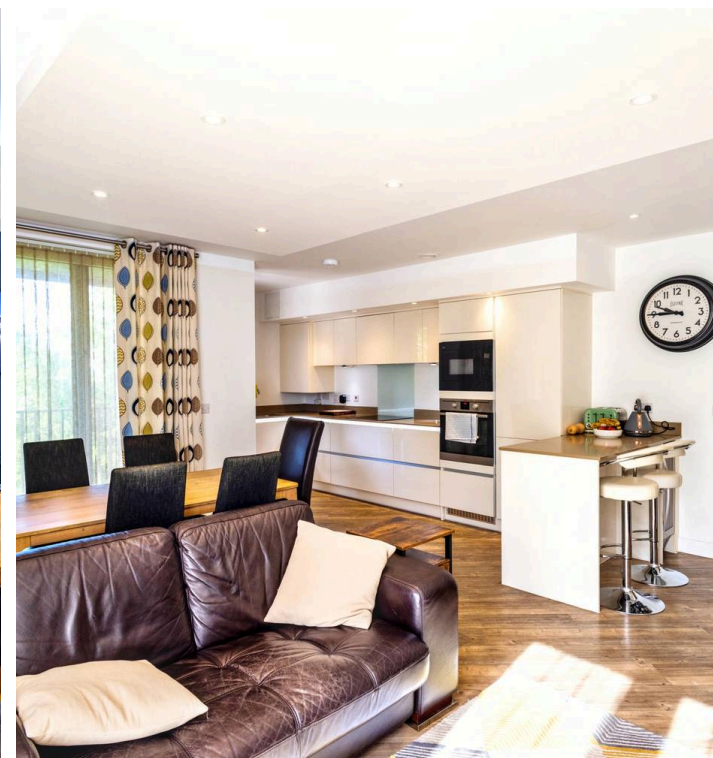
Council Tax band: E

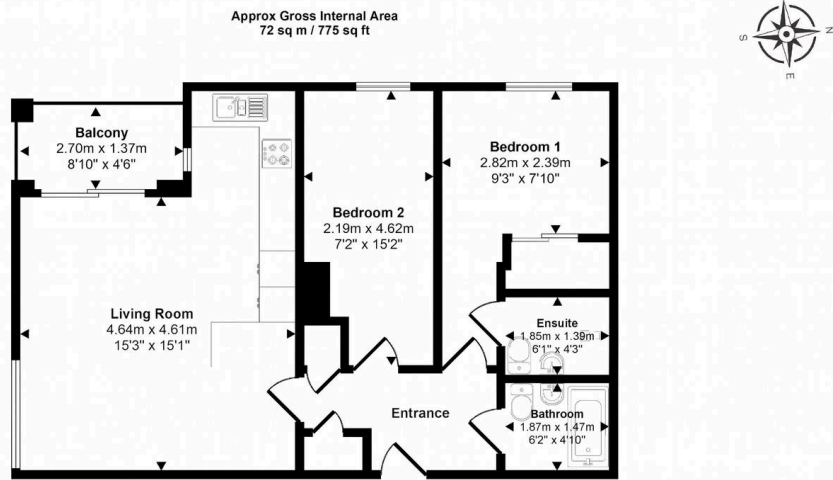
Tenure: Leasehold

EPC Energy Efficiency Rating: B

EPC Environmental Impact Rating: B

- Private balcony with scenic views
- Off-street parking
- Contemporary bathrooms with walk-in showers
- Built-in wardrobes in bedrooms
- Landscaped communal surroundings
- South bank development of York
- Close to Bishopthorpe Road
- Ideal for York racecourse
- Excellent local schools
- Two Bed, Two bath





Floorplan

Whilst every attempt has been made to ensure the accuracy of the floor plan contained here, measurements of doors, windows, rooms and any other items are approximate and no responsibility is taken for any error, omission, or mis-statement. The measurements should not be relied upon for valuation, transaction and/or funding purposes. This plan is for illustrative purposes only and should be used as such by any prospective purchaser or tenant.





## Aspire Estates

Aspire Properties, Wira Business Park Ring Road - LS16 6EB

0113 8875079

[estatesales@aspirepropertygroup.co.uk](mailto:estatesales@aspirepropertygroup.co.uk)

[www.aspirepropertygroup.co.uk/](http://www.aspirepropertygroup.co.uk/)