



Chartfield Avenue, SW15

£549,950

An immaculately presented 744 Sq. Ft, Two double bedroom apartment with a south facing balcony and a secure allocated underground parking space. Situated on second floor of this well-run private block, the flat is tucked away in a quiet corner of the development with views on to Chartfield Avenue.

The fixtures, fittings and finish are of a high standard throughout with features including under floor heating. The accommodation comprises an entrance hallway with two large cupboards, bright reception room with wood floors and doors to the private balcony, fully fitted open plan kitchen, a master bedroom with fitted wardrobes and en-suite shower room, a guest double bedroom and family bathroom.

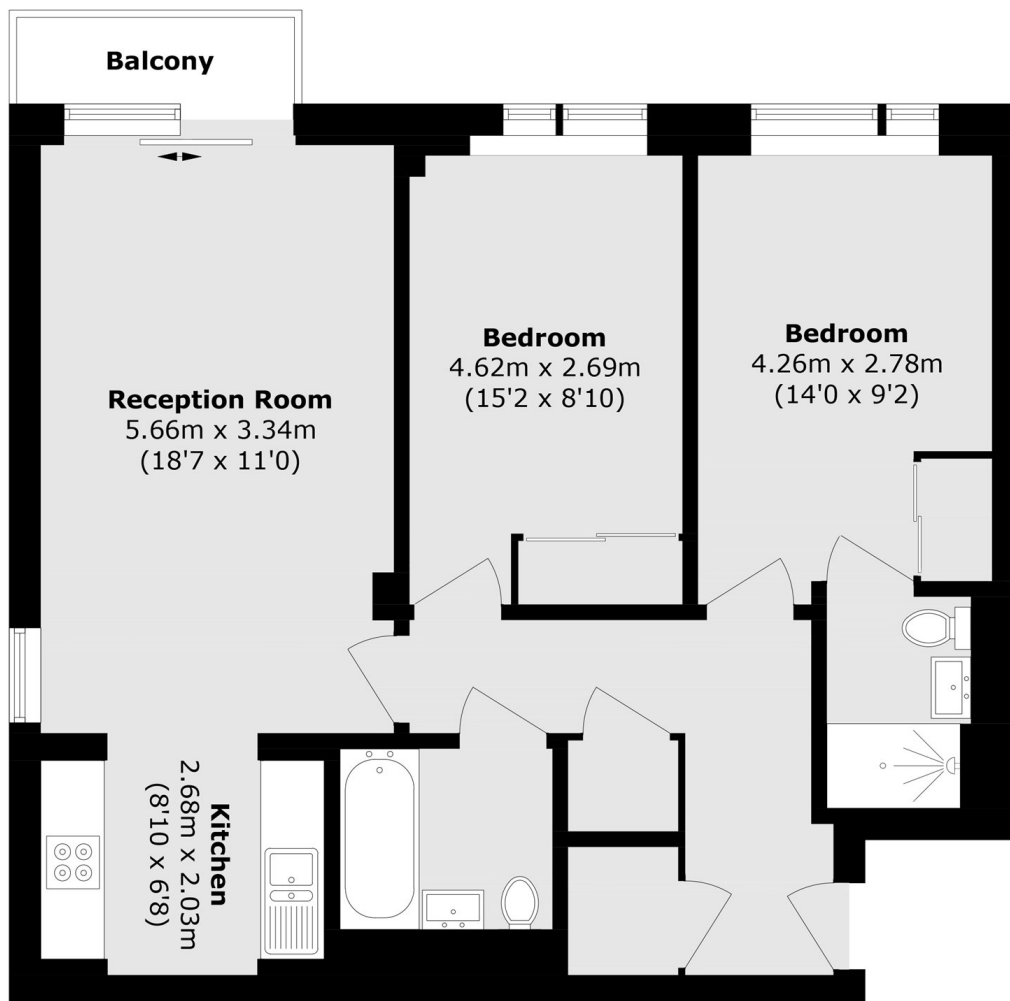
Residents benefit from the use of an on-site gym, additional communal roof terrace and concierge service.

Putney Square is a highly sought after development located within a short walk of the high street, mainline and underground stations as well as the open spaces of Putney Heath. This property is being sold chain free and a 360 virtual tour is available.

Features

- Two Bedrooms
- Two Bathrooms
- Private Off Street Parking
- Balcony
- Chain Free
- Concierge

Chartfield Avenue, London, SW15



Total area (approx.): 69.2 sq. m (744.9 sq. ft)

Balcony (approx.): 2.2 sq. m (23.7 sq. ft)