



£240,000

2 Bedroom End of Terrace House for sale

Plot 83 The Brahms at Molbrook, 1 Molbrook Road, South Molton



EweMove
SALES AND LETTINGS



Overview

The Brahms is a brilliant starter home, an ideal choice for first time buyers who are looking to take the first step onto the property ladder.



Key Features

- Ideal starter home
- Energy-efficient
- South-facing garden
- 10 Years NHBC Warranty
- End-terrace with private parking
- Spacious lounge
- Kitchen/diner with storage
- Ground floor cloakroom
- 2 Years Fixtures & Fittings Guarantee



The Brahms is a brilliant starter home, an ideal choice for first time buyers who are looking to take the first step onto the property ladder.

Off the hallway you'll find a spacious lounge, with plenty of room to relax in after a busy day. An open plan kitchen/dining room is accessible via the lounge. There's plenty of surface and storage space, which you can never have enough of. You'll also find access to your garden through a rear door. This really is a brilliant space for all your social get-togethers. The downstairs cloakroom is a great addition too, especially when you have guests. There's also a practical storage area which is handy for hiding away the less glamorous parts of your home.

The first floor is home to two good sized double bedrooms, as well as a family bathroom. If you're looking to work from home, one of the bedrooms could comfortably double up as a home office, making The Brahms an extremely flexible and adaptable home.

EPC: A rating.

Estimated Completion Date: May 26 - Jul 26

Total Internal Area: 85 sq. m. 858 sq. ft.



Rooms

Lounge 3,890.0mm x 3,870.0mm - 12' 9" x 12' 8"

Kitchen/Dining Room 3,230.0mm x 4,245.0mm - 10' 7" x 13' 11"

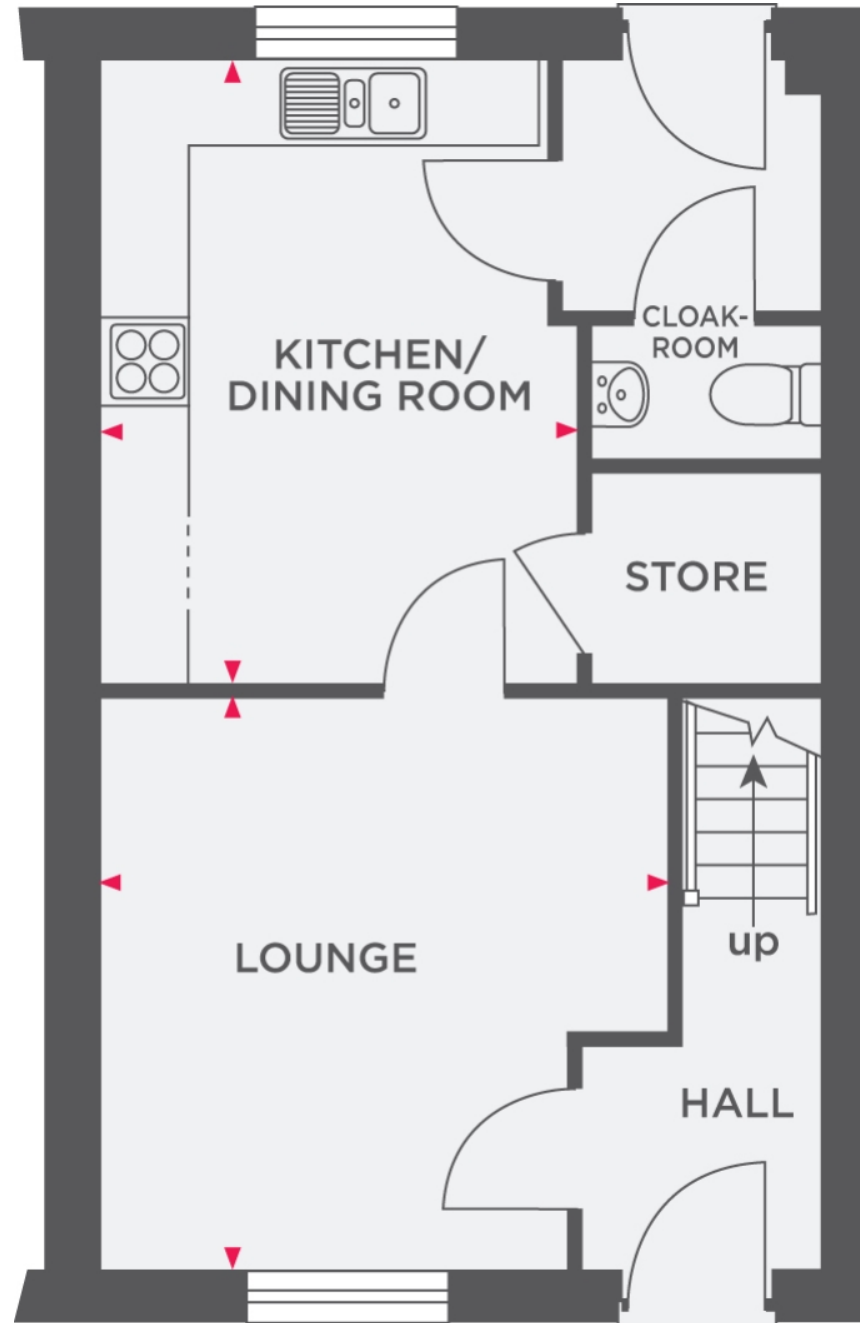
Cloakroom 988.0mm x 1,570.0mm - 3' 3" x 5' 2"

Bedroom 1 4,895.0mm x 3,500.0mm - 16' 1" x 11' 6"

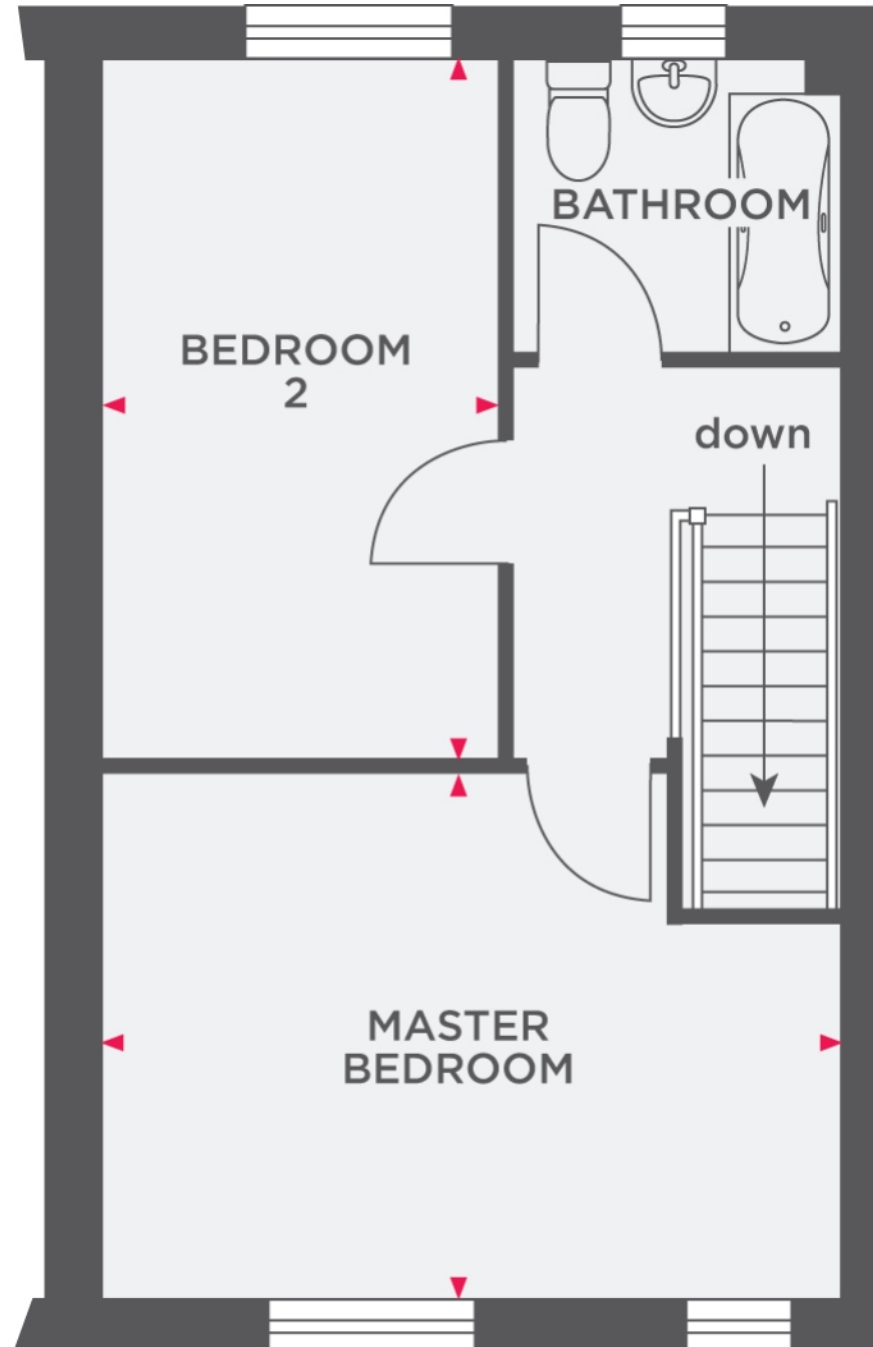
Bedroom 2 2,655.0mm x 4,635.0mm - 8' 9" x 15' 2"

Bathroom 2,150.0mm x 1,950.0mm - 7' 1" x 6' 5"

Floorplans



Floorplans



EPC

The EPC will be available within 28 days or the property may be exempt, please speak to us for more details.

