



TO LET



Flat 4, 123 Lynchford Road, Farnborough, Hampshire, GU14 6ET
£1,450 PCM

- Available Beginning Of May
- Built-In Storage Space
- Allocated Parking For One Car
- Superb Top Floor Penthouse
- Council Tax Band A
- 2 Double Bedrooms
- Modern Kitchen
- White Goods Included
- Deposit £1673.07
- EPC Energy Rating Band (C) 79

THE PROPERTY

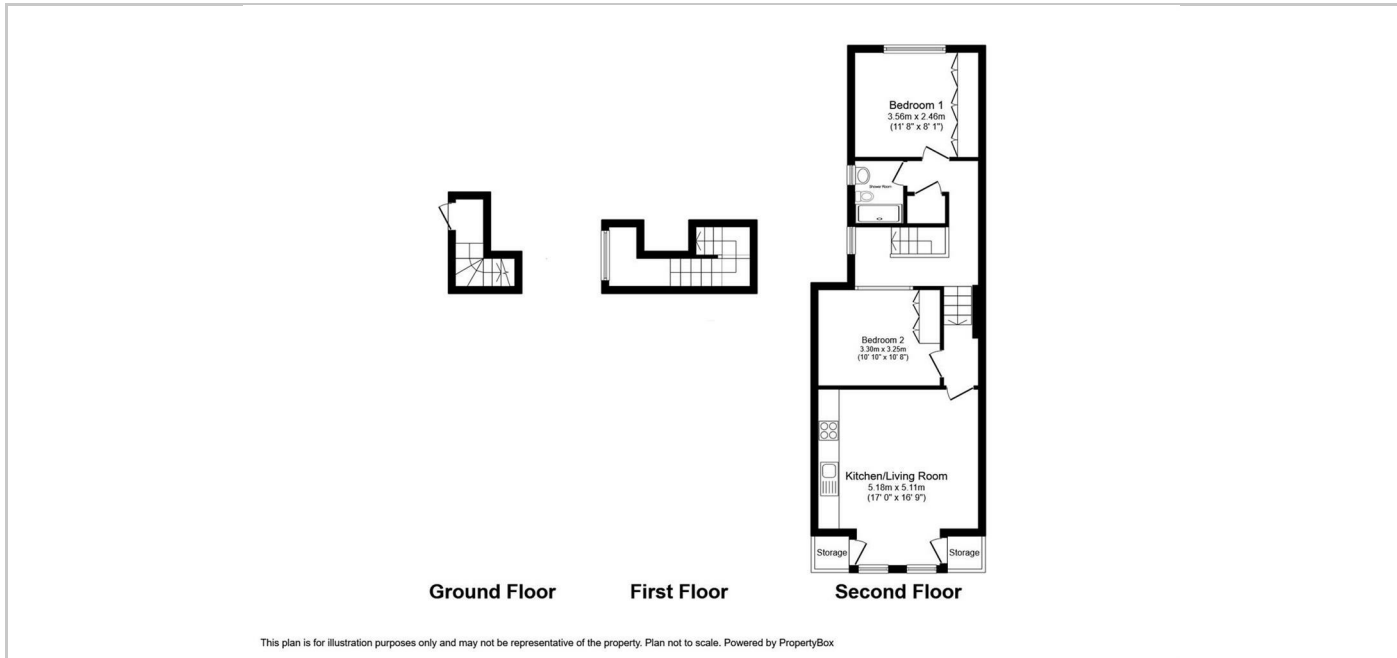
A beautifully presented penthouse-style apartment offering stylish, spacious and modern living throughout. This impressive split-level property benefits from its own private entrance and features a generous open-plan living and kitchen area. The apartment offers two well-proportioned double bedrooms, both with built-in wardrobes, along with a contemporary shower room finished to a high standard. Externally, the property benefits from allocated parking for one vehicle.

Ideally located within the popular North Camp village, the property is within easy reach of North Camp Station (0.7 miles), Ash Vale Station (1.2 miles) and Farnborough Station (1.8 miles), making it ideal for commuters. Local shops and amenities are within walking distance, and there is excellent access to the A331 and M3.

North Camp offers a wide range of local amenities, shopping facilities and leisure centres, making it a vibrant and well-connected place to live.

Available beginning of May.

SITUATION



Directions