



## DUNSTER GARDENS, NW6

£450,000

Two Double Bedrooms  
First Floor Flat  
Separate Kitchen  
Share of Freehold  
Chain-Free  
Close To Local Amenities

@marshandparsons  
marshandparsons.co.uk

MARSH &  
PARSONS



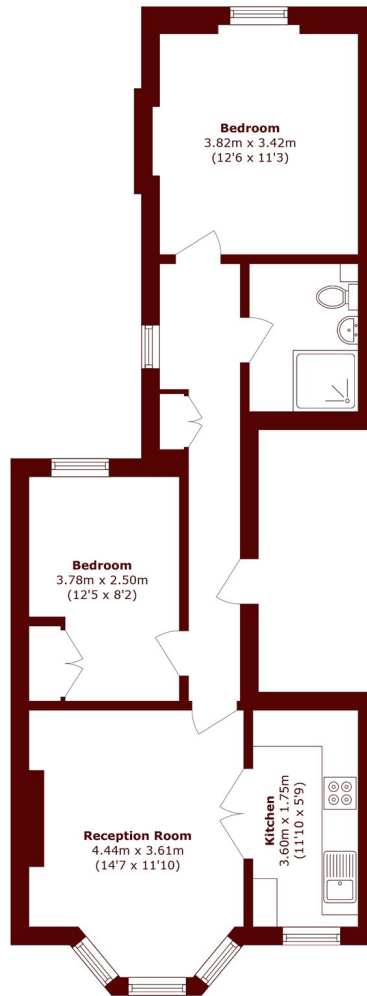
# ABOUT THE PROPERTY

Set in a period conversion is this two double bedroom flat on the first floor, with a south west facing reception. The property has a separate kitchen, high ceilings throughout, a share in the freehold, and is available chain-free.

Dunster Gardens is ideally positioned between Queen's Park and West Hampstead, with the shops, cafes, restaurants and bars on Willesden Lane, Salusbury Road, and West End Lane. Transport links include Kilburn (Jubilee) and Brondesbury (Overground).



# STEP INSIDE DUNSTER GARDENS



Total area (approx.): 57.7 sq. m (621.0 sq. ft)

**Queen's Park**  
020 7624 4513

Energy Rating: D We aim to make our particulars both accurate and reliable. However, they are not guaranteed; nor do they form part of an offer or contract. If you require clarification on any points then please contact us, especially if you're traveling some distance to view. Please note that appliances and heating systems have not been tested and therefore no warranties can be given as to their good working order

**MARSH &  
PARSONS**