



Pinkmove

## Claremont

Offers in the region of £220,000

- Three Bedroom Semi-detached House
- Open Plan Kitchen/Diner
- Rear Patio Garden
- Single Garage and Driveway
- EPC Rating: D



Pinkmove



Pinkmove

01633 746088  
team@pinkmove.co.uk



## About the property

Situated in the desirable Claremont area of Newport, this well-presented three-bedroom semi-detached home offers stylish and practical living space—ideal for families, professionals, or first-time buyers.

On the ground floor, a spacious and inviting living room opens seamlessly into the open-plan kitchen/diner via a set of double doors, creating a natural flow throughout the downstairs area. A convenient WC completes this level, adding to the home's functionality.

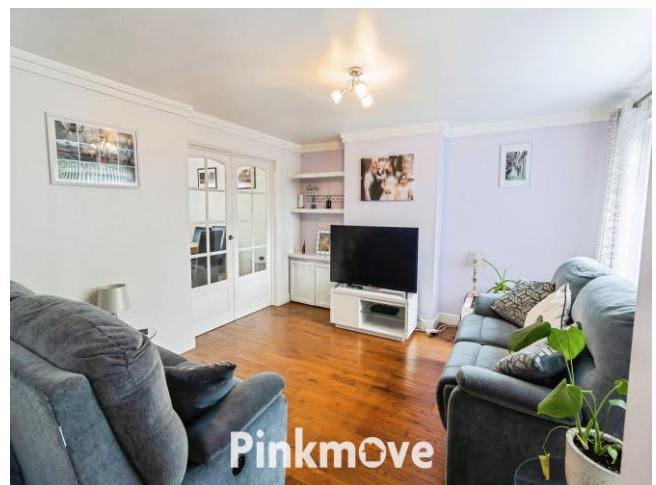
Upstairs, the property features two comfortable double bedrooms and a well-sized single bedroom, along with a modern family bathroom.

To the rear, you'll find a private patio garden—perfect for outdoor dining or relaxing—as well as a single garage and driveway providing off-road parking.

Claremont is a peaceful and well-connected neighbourhood, offering easy access to a range of local amenities. Families will appreciate the proximity to respected schools, including Malpas Park Primary School (0.3 miles), Malpas Court Primary School (0.7 miles), and Rougemont School (0.8 miles).

Commuters benefit from excellent transport links, with the M4 motorway just minutes away via Junctions 25 and 26, and Newport Railway Station offering direct services to Cardiff, Bristol, and London Paddington.

Local shops, supermarkets, cafés, and leisure facilities are all within easy reach, while nearby green spaces such as Belle Vue Park and Tredegar House provide scenic spots for outdoor activities.





## Accommodation

### Living Room

12' 11" x 16' 10" ( 3.94m x 5.13m )

### Kitchen/Diner

10' 10" x 16' 9" ( 3.30m x 5.11m )

### Downstairs Wc

2' 8" x 5' 6" ( 0.81m x 1.68m )

### Bedroom 1

12' 10" x 10' 4" ( 3.91m x 3.15m )

### Bedroom 2

11' 4" x 9' 2" ( 3.45m x 2.79m )

### Bedroom 3

9' 4" x 6' 5" ( 2.84m x 1.96m )

### Bathroom

6' 1" x 7' 6" ( 1.85m x 2.29m )

01633 746088

team@pinkmove.co.uk

**Pinkmove**

## Floorplan



## Important Information

Note while we endeavour to make our sales details accurate and reliable, if there is any point which is of particular interest to you, please contact the office and we will be pleased to confirm the position for you. We have not personally tested any apparatus, equipment, fixtures, fittings or services and cannot verify they are in working order or fit for their purposes. Nothing in these particulars is intended to indicate that carpets or curtains, furnishings or fittings, electrical goods (whether wired or not). Gas fires or light fittings or any other fixtures not expressly included form part of the property offered for sale. This computer generated Floorplan, if applicable, is intended as a general guide to the layout and design of the property. It is not to scale and should not be relied upon for dimensions. Tenure: We cannot confirm the tenure of the property as we have not had access to the legal documents. The buyer is advised to obtain verification from their solicitor or surveyor.

Peter Alan Limited is registered in England and Wales under company number 2073153, Registered Office is Cumbria House, 16-20 Hockliffe Street, Leighton Buzzard, Bedfordshire, LU7 1GN. VAT Registration Number is 500 2481 05. For activities relating to regulated mortgages and non-investment insurance contracts, Peter Alan Limited is an appointed representative of Connells Limited which is authorised and regulated by the Financial Conduct Authority. Connells Limited's Financial Services Register number is 302221. Most buy-to-let

