



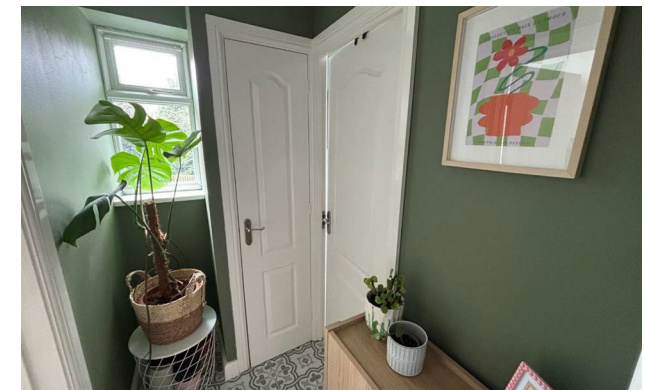
jordan fishwick

DIDSBURY
Holme Road



Holme Road, Didsbury, M20 2TX

Offers Over £200,000



The Property

A most appealing first floor apartment enjoying an enviable position with pleasant south westerly facing views and the benefit of a GARAGE.

The well planned living space is presented to a high standard with numerous noteworthy features including a lovely modern kitchen and shower room, generous living room with a light open aspect, double bedroom with wardrobe space, uPVC double glazing, gas central heating with a new boiler in 2022 and an entrance hall with built-in cloaks space.

Outside of the development there is ample residents parking and as previously mentioned, this property also enjoys the benefit of a garage in an adjacent block.

Spath Holme is a popular purpose built development located on a select tree lined road which is within walking distance of both Didsbury & West Didsbury Villages, in addition to being opposite Marie Louise Gardens.

Directions

M20 2TX



- Appealing first floor apartment
- Pleasant south westerly facing aspect
- Modern kitchen & shower room
- Generous living room
- uPVC double glazing
- Gas central heating
- Double bedroom
- Residents parking & a garage
- Great location
- Close to both Didsbury & West Didsbury

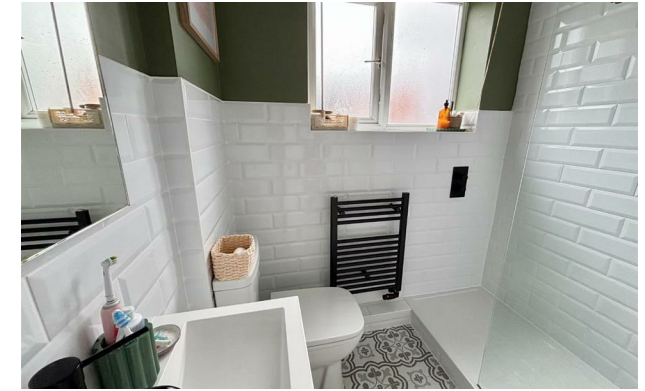
Postcode - M20 2TX

EPC Rating - C

Floor Area - 454.00 sq ft

Local Authority - Manchester City Council

Council Tax - A



FIRST FLOOR
454 sq.ft. (42.2 sq.m.) approx.



TOTAL FLOOR AREA : 454 sq.ft. (42.2 sq.m.) approx.
Measurements are approximate. Not to scale. Illustrative purposes only
Made with Metropix ©2026



These particulars are believed to be accurate but they are not guaranteed and do not form a contract. Neither Jordan Fishwick nor the vendor or lessor accept any responsibility in respect of these particulars, which are not intended to be statements or representations of fact and any intending purchaser or lessee must satisfy himself by inspection or otherwise as to the correctness of each of the statements contained in these particulars. Any floorplans on this brochure are for illustrative purposes only and are not necessarily to scale.

Offices also at: Wilmslow, Macclesfield, Hale, Sale, Chorlton, Glossop, Manchester & Salford

757-759 Wilmslow Road, Didsbury Village, Manchester

0161 445 4480

didsbury@jordanfishwick.co.uk
www.jordanfishwick.co.uk