



Flowers Close, NW2

£325,000

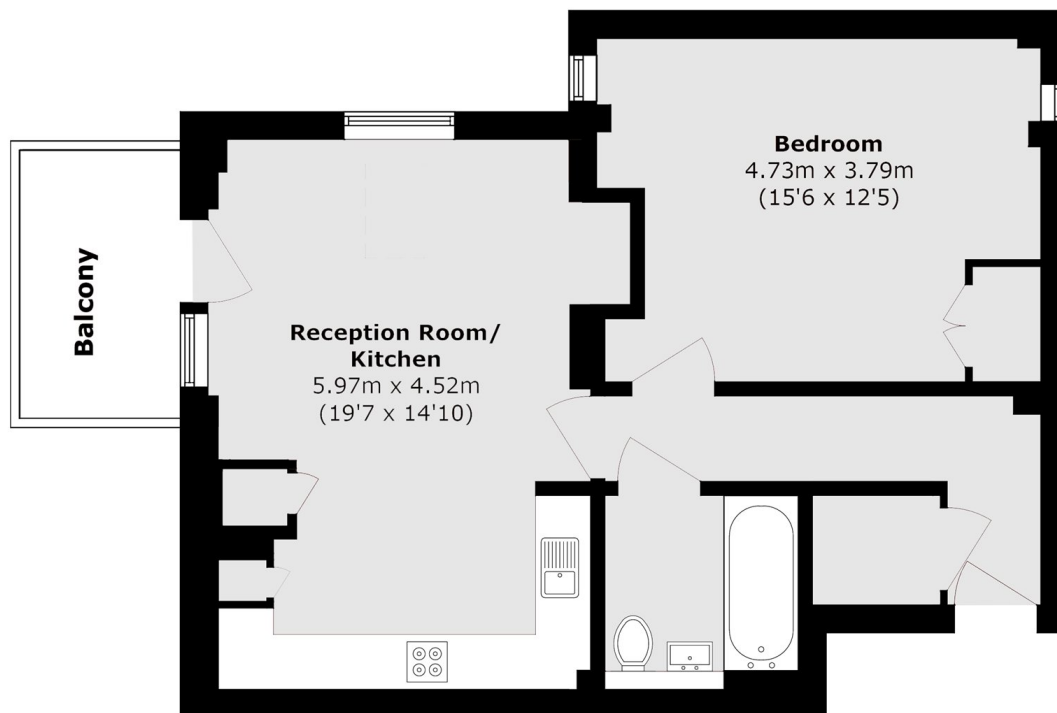
A bright one-bedroom flat featuring an open plan kitchen and living area with access to a private balcony. The property benefits from a spacious communal terrace with impressive London views, a shared garden and allocated parking

Cipher Court is a peaceful, modern development situated within Flowers Close. The 86 acre, green open spaces of Gladstone Park are within easy reach, with cafés, restaurants and shops located in Brent Cross and Neasden. The nearest transport links from Brent Cross West (Thameslink) and Neasden (Jubilee Line) provide easy access into the city and London's airports.

Features

- One Bedroom Flat
- Open Plan Living And Kitchen
- Private Balcony
- Allocated Parking
- Impressive London Views
- Communal Gardens

Flowers Close, London, NW2



Total area (approx.): 56.7 sq. m (610.3 sq. ft)

Balcony area (approx.): 5.0 sq. m (53.8 sq. ft)