



7 Treeneuk Gardens
Chesterfield, S40 3FH

Offers Over £750,000



7 Treeneuk Gardens

, Chesterfield, S40 3FH

£750,000 (Offers in excess of) Situated within an exclusive woodland development, this exceptional five-bedroom detached family home offers the perfect balance of tranquillity and convenience, just a short walk from the vibrant heart of Chesterfield, yet surrounded by the breathtaking landscapes of the Derbyshire countryside.

Extending to an impressive 2,206 sq ft across three beautifully arranged floors, this home has been thoughtfully designed for modern family living. Both practical in its layout and wonderfully social in its flow, it provides generous proportions and versatile spaces ideal for a growing family and effortless entertaining.

Externally the property sits on a corner plot, to the rear of the home is a private west-facing garden capturing all the afternoon and evening sun. The property also benefits from a detached double garage and a block paved driveway providing parking for multiple vehicles.

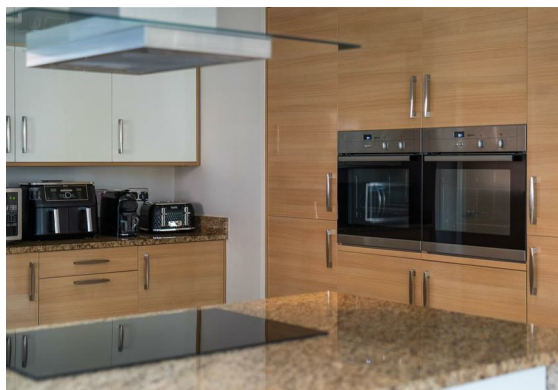
The ground floor comprises

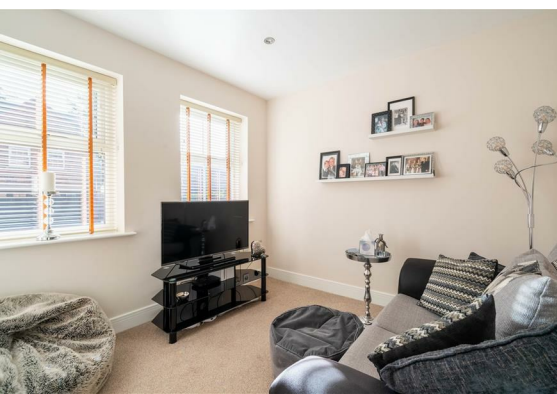
The first floor comprises

The second floor comprises

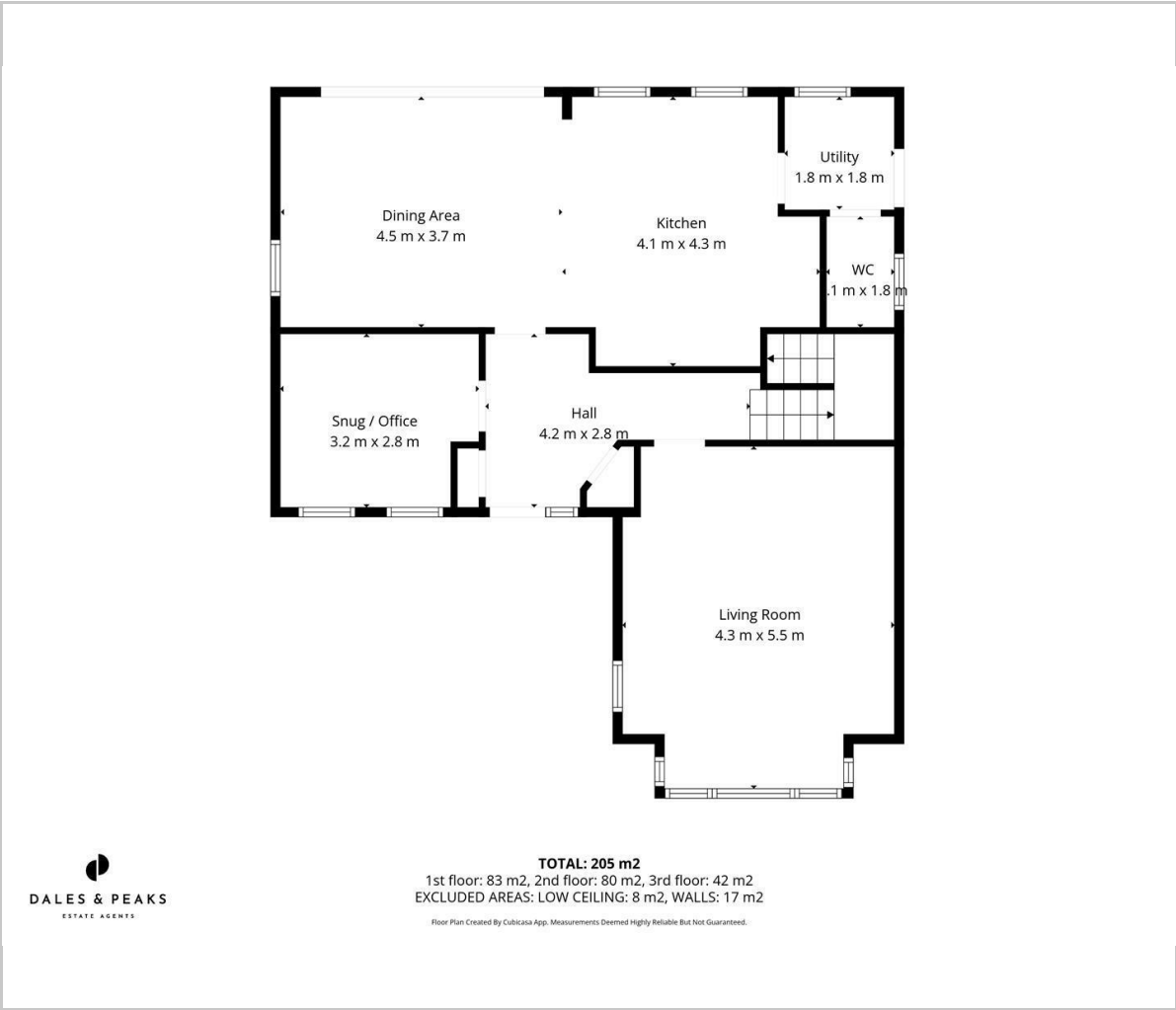
Why Ashgate?

**Dales & Peaks ForwardMove
please read**





Floor Plan



Viewing

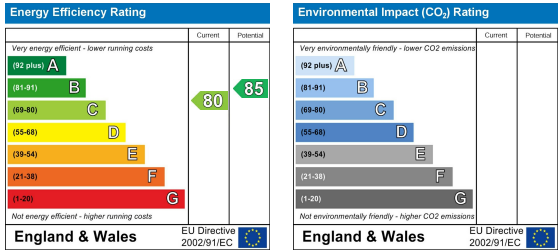
Please contact our Chesterfield Office on 01246 567540 if you wish to arrange a viewing appointment for this property or require further information.

These particulars, whilst believed to be accurate are set out as a general outline only for guidance and do not constitute any part of an offer or contract. Intending purchasers should not rely on them as statements of representation of fact, but must satisfy themselves by inspection or otherwise as to their accuracy. No person in this firms employment has the authority to make or give any representation or warranty in respect of the property.

Area Map



Energy Efficiency Graph



131 Chatsworth Road, Chesterfield, Derbyshire, S40 2AP
T: 01246 567540



E: info@dalesandpeaks.co.uk
www.dalesandpeaks.co.uk