



NORBURY HILL, SW16

£675,000

- Three bedroom house
- Off street parking
- Large private garden
- Close to amenities
- Excellent transport links
- Energy rating: D





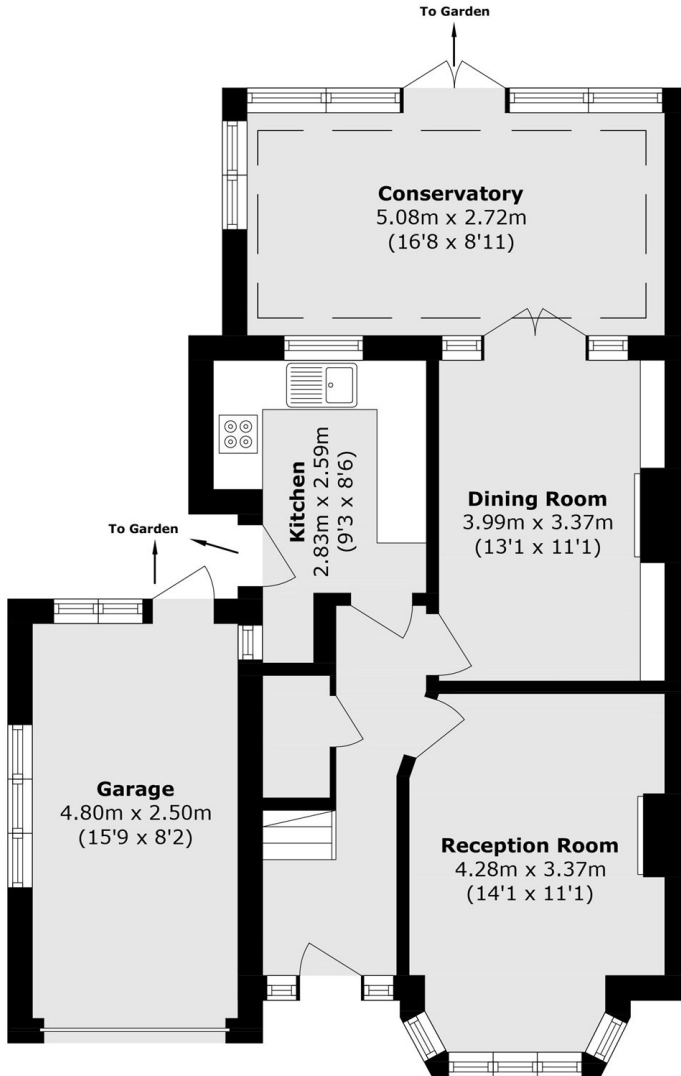
ABOUT THE HOME

A well-presented three bedroom house situated on the desirable Norbury Hill, benefitting from a driveway and a huge private garden.

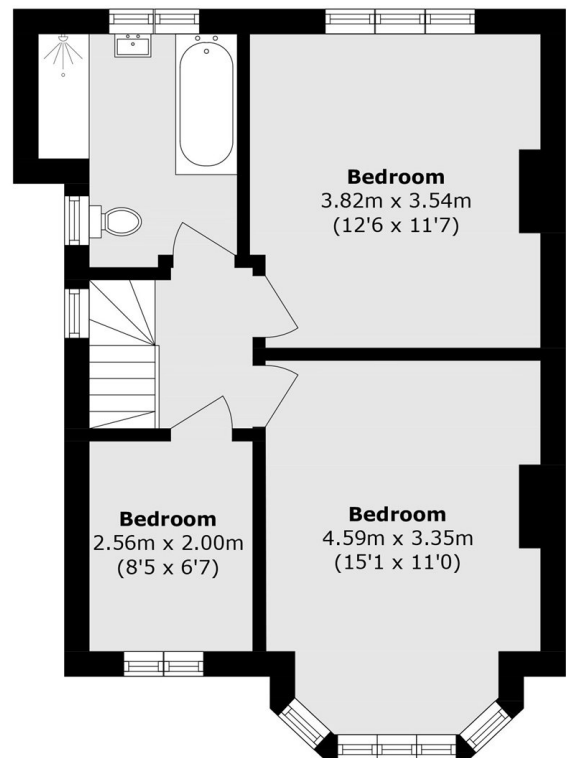
Norbury Hill is situated in a sought after location, close to a number of green spaces on their door step with Streatham Common, Norwood Grove, Biggin Wood and Norbury Park all located within walking distance. There are also a number of local shops, bars and restaurants in the immediate area on both Streatham High Road and Norbury High Street as well as the ever popular Rookery Cafe at the top of Streatham Common. Commuting options are a plenty including Norbury Station, Streatham Station and a number of regular bus routes into the City via Balham and Brixton.







Ground Floor



First Floor

Total area (approx.): 99.1 sq. m (1066.7 sq. ft)

Garage area (approx.): 12.0 sq. m (129.1 sq. ft)

JACKSONS STREATHAM

1-3 De Montfort Parade,
 Streatham High Road,
 Sales: 020 8487 3179
 Lettings: 020 8487 3180

Energy Rating: D We aim to make our particulars both accurate and reliable. However they are not guaranteed; nor do they form part of an offer or contract. If you require clarification on any points then please contact us, especially if you're traveling some distance to view. Please note that appliances and heating systems have not been tested and therefore no warranties can be given as to their good working order.