

Aldensley Road W6



Aldensley Road W6

2 DOUBLE BEDROOMS
RECEPTION / KITCHEN / BREAKFAST ROOM
BATHROOM & SHOWER ROOM
STUDY
DECKED & WALLED GARDEN
EPC RATING E 45
COUNCIL TAX BAND E
LEASE LENGTH: 947 YRS APX
BUILDING INSURANCE: £500 PA APX

A truly wonderful, individual and well presented 2 double bedroom/2 bathroom upper maisonette with excellent living/entertaining space on the second floor and a secluded walled and decked patio garden. The fabulous open plan kitchen/reception spans the width and the length of the 2nd floor and is flooded with light as it enjoys a triple aspect having 4 attractive Georgian windows. The 2 double bedrooms and shower room are located on the first floor and there is a contemporary family bathroom situated on the half landing below. A spiral staircase from the kitchen/reception leads to a study which has been created in the loft space and has generous eaves storage and far-reaching viewings across West London. This property of approximately 1,510sq ft, also boasts an excellent, voluminous cellar which is accessed from the patio garden and provides fantastic storage.

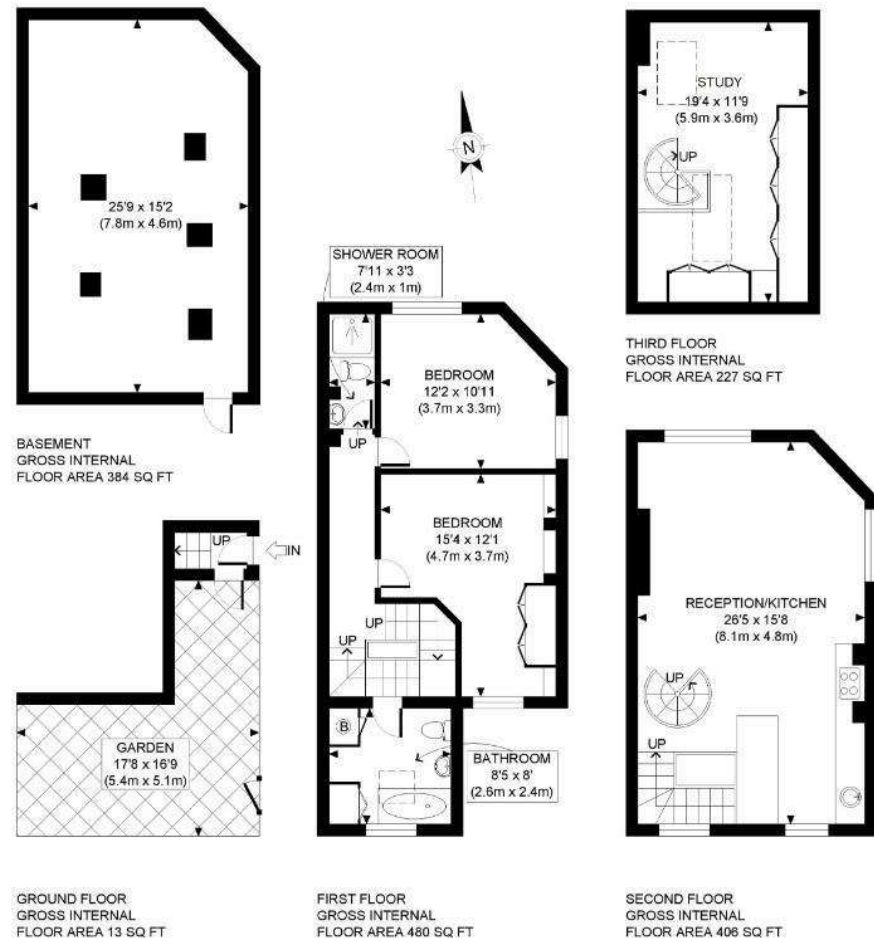
PRICE GUIDE £875,000
LEASEHOLD

SUBJECT TO CONTRACT









APPROX. GROSS INTERNAL FLOOR AREA: 1510 SQ FT/ 140 SQM

PROPERTY PHOTO PLANS.CO.UK
ONE STOP SHOP FOR PROPERTY MARKETING

This plan is for illustrative purposes only and should be used as such by any prospective client. Whilst every attempt has been made to ensure the accuracy of the Floor Plan contained here, measurements of the doors, windows, rooms and any other items are approximate and no responsibility is taken for any errors, omissions, or misstatement. The services, systems and appliances shown have not been tested and no guarantee as to the operability or efficiency can be given.