



PR 
PROPERTY

44B Ramridge Road, Luton, Bedfordshire, LU2 0TQ
£1,000 PCM

- Spacious Two Bedroom Maisonette
- PARKING ON SITE
- MUST BE VIEWED

- AVAILABLE MAY 2026
- CLOSE TO TOWN
- EXCLUSIVE TO PR LETTINGS

- OPEN PLAN LIVING SPACE
- CLOSE TO TRANSPORT LINKS

Exclusive to P&R Property — This well-positioned two bedroom apartment on Ramridge Road offers a fantastic opportunity for those looking to settle into a comfortable, modern home in a great Luton location. The spacious open plan living area gives the property a real sense of space and light, perfect for relaxing or entertaining. With Luton town centre just a short distance away, on-site parking, excellent bus routes nearby and swift access to the M1, everyday life here is made genuinely easy. Available from May 2026 — don't miss your chance to secure this one before it goes.

HALLWAY

LIVING ROOM

Open plan to kitchen

KITCHEN AREA

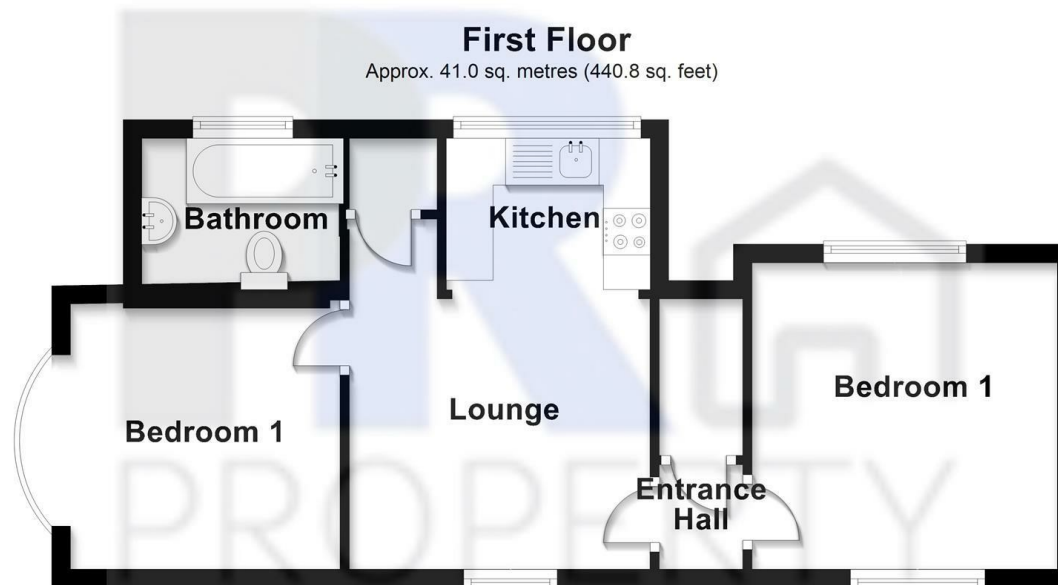
Fitted units, includes washing machine, fridge freezer and cooker

BEDROOM

BEDROOM

BATHROOM

Fully fitted including basin, bath, shower and WC



Total area: approx. 41.0 sq. metres (440.8 sq. feet)

44a ramridge road

Energy Efficiency Rating		
	Current	Potential
Very energy efficient - lower running costs		
(92 plus) A		
(81-91) B		
(69-80) C		
(55-68) D		
(39-54) E		
(21-38) F		
(1-20) G		
Not energy efficient - higher running costs		
	70	74
England & Wales	EU Directive 2002/91/EC	