



**Coed Aben, Wrexham LL13 9NY**

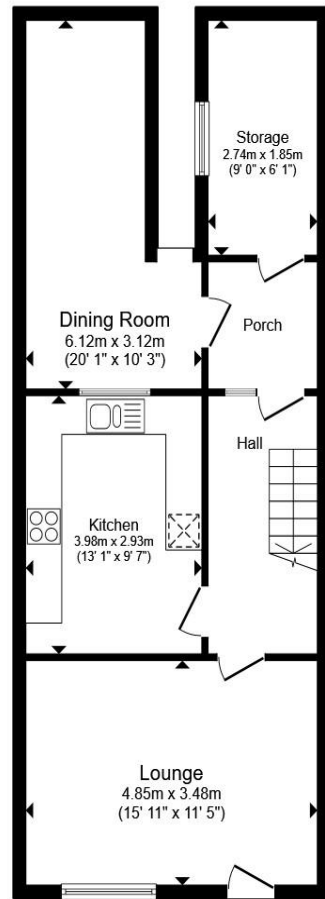
Not for marketing purposes INTERNAL USE ONLY

**welcome to**

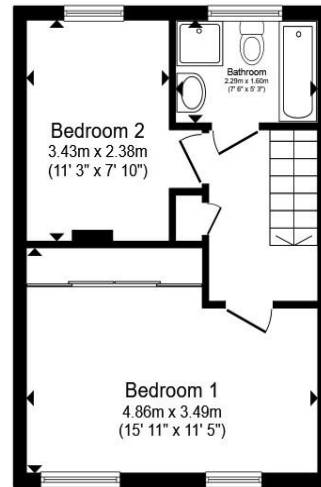
**Coed Aben, Wrexham**

A well-presented two bedroom mid-terrace property situated in a convenient location in Wrexham, ideal for first time buyers or those looking to put their own stamp on a home. This property is being sold with NO ONWARD CHAIN.





**Ground Floor**



**First Floor**

Total floor area 95.1 m<sup>2</sup> (1,024 sq.ft.) approx

This floor plan is for illustrative purposes only. It is not drawn to scale. Any measurements, floor areas (including any total floor area), openings and orientation are approximate. No details are guaranteed, they cannot be relied upon for any purpose and they do not form part of any agreement. No liability is taken for any error, omission or misstatement. A party must rely upon its own inspection(s). Powered by [www.propertybox.io](http://www.propertybox.io)

welcome to

## Coed Aben, Wrexham

- TWO BEDROOM MID TERRACED PROPERTY
- NO ONWARD CHAIN
- TWO DOUBLE BEDROOMS
- LOW MAINTENANCE GARDEN
- SCOPE TO MAKE INTO YOUR OWN

Tenure: Freehold EPC Rating: D  
Council Tax Band: B

# £115,000



Please note the marker reflects the postcode not the actual property

check out more properties at [swetenhams.co.uk](http://swetenhams.co.uk)



Property Ref:  
CHS119606 - 0002

1. MONEY LAUNDERING REGULATIONS Intending purchasers will be asked to produce identification documentation at a later stage and we would ask for your co-operation in order that there is no delay in agreeing the sale. 2. These particulars do not constitute part or all of an offer or contract. 3. The measurements indicated are supplied for guidance only and as such must be considered incorrect. Potential buyers are advised to recheck measurements before committing to any expense. 4. We have not tested any apparatus, equipment, fixtures or services and it is in the buyers interest to check the working condition of any appliances. 5. Where an EPC, or a Home Report (Scotland only) is held for this property, it is available for inspection at the branch by appointment. If you require a printed version of a Home Report, you will need to pay a reasonable production charge reflecting printing and other costs. 6. We are not able to offer an opinion either written or verbal on the content of these reports and this must be obtained from your legal representative. 7. Whilst we take care in preparing these reports, a buyer should ensure that his/her legal representative confirms as soon as possible all matters relating to title including the extent and boundaries of the property and other important matters before exchange of contracts.

**Not for marketing purposes INTERNAL USE ONLY**



**01244 321321**



[chester@swetenhams.co.uk](mailto:chester@swetenhams.co.uk)



28 Lower Bridge Street, CHESTER, Cheshire,  
CH1 1RS



[swetenhams.co.uk](http://swetenhams.co.uk)