

35 Woodland Grove

Epping

Council Tax band: C

Tenure: Leasehold

- Two double bedroom apartment
- Allocated parking
- Moments from Epping station
- Loft space
- Telephone entry system
- Short walk to Epping high street



Communal Entrance

Entrance Hallway

Lounge/Dining Room

16' 4" x 10' 11" (4.99m x 3.33m)

Kitchen

10' 4" x 6' 2" (3.16m x 1.87m)

Bedroom One

13' 5" x 9' 2" (4.08m x 2.79m)

Bedroom Two

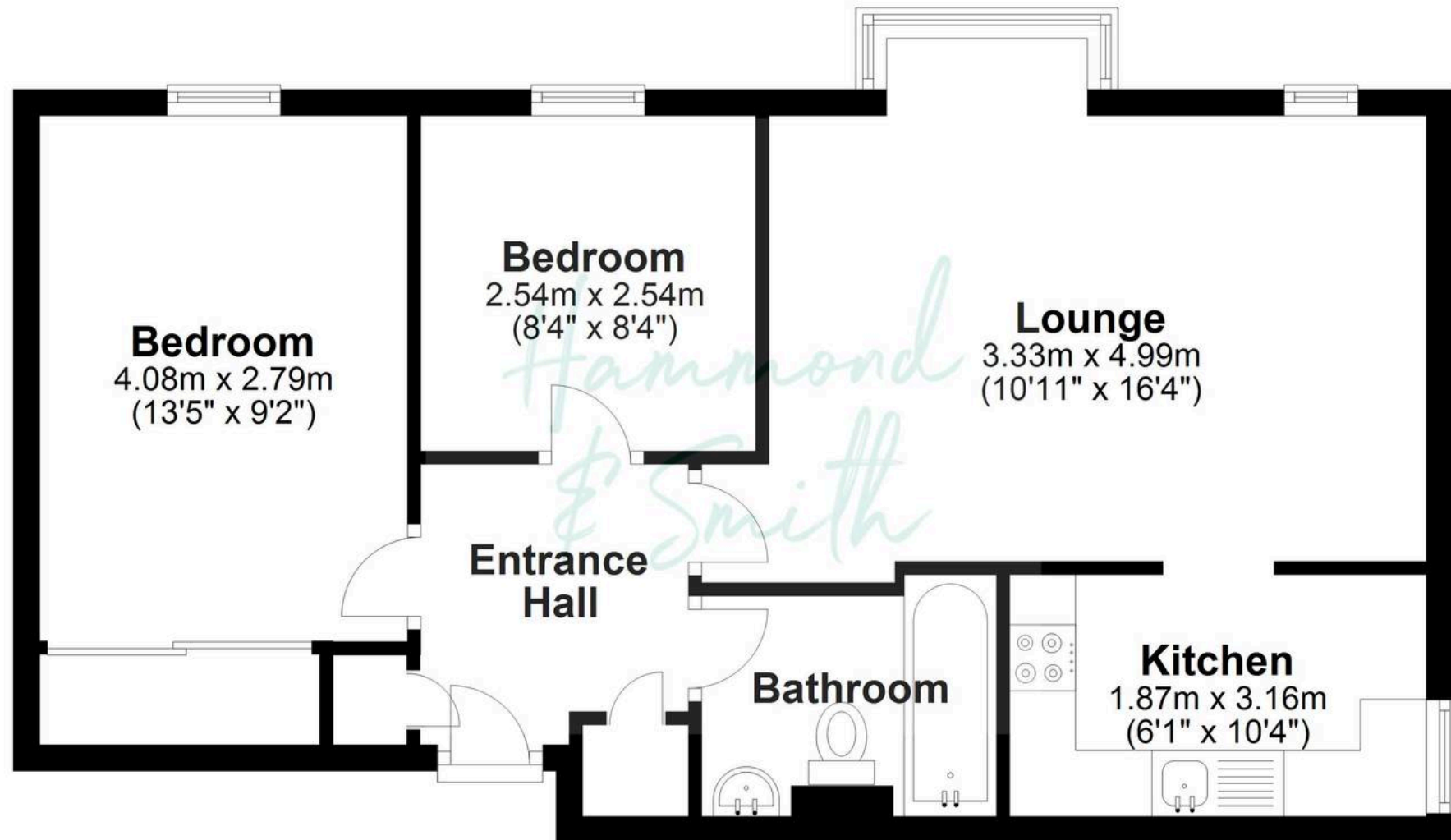
8' 4" x 8' 4" (2.54m x 2.54m)

Family Bathroom





Ground Floor



Total area: approx. 54.1 sq. metres (582.2 sq. feet)

Floorplans are provided for guidance only. They are not to scale & must not form any part of a legal contract or be reproduced
Plan produced using PlanUp.