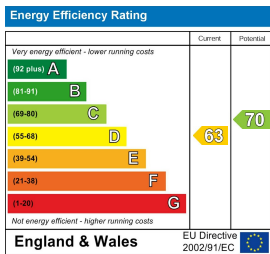


- Immaculate 3 Bedroom Maisonette
- Large Lounge with Brick Surround Fireplace
- Wooden Flooring Throughout
- Modern Kitchen + Utility Room and Appliances
- Oil Fired Central Heating
- Exposed Beams throughout property
- Shared Garden with Pond
- Off Street Parking for one car
- Secluded Village Location
- Available Now



GREENWOOD
PROPERTY CONSULTANTS

Bear Street
Nayland, Essex, CO6 4HX

£1,695 PCM
£1,955: Deposit
29th April 2026: Available Date



87 Crouch Street
Colchester
Essex
CO3 3EZ

<http://www.greenwoodpc.co.uk>
info@greenwoodpc.co.uk
01206 616820

Agents Note: Whilst every care has been taken to prepare these particulars, they are for guidance purposes only. All measurements are approximate and are for general guidance purposes only and whilst every care has been taken to ensure their accuracy, they should not be relied upon and potential buyers/tenants are advised to recheck the measurements

GREENWOOD
PROPERTY CONSULTANTS

GREENWOOD
PROPERTY CONSULTANTS



GREENWOOD
PROPERTY CONSULTANTS

Property Description

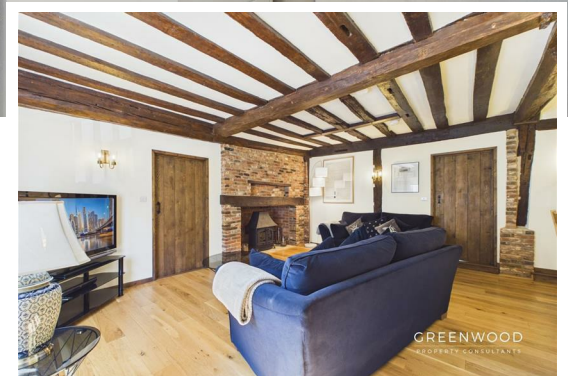
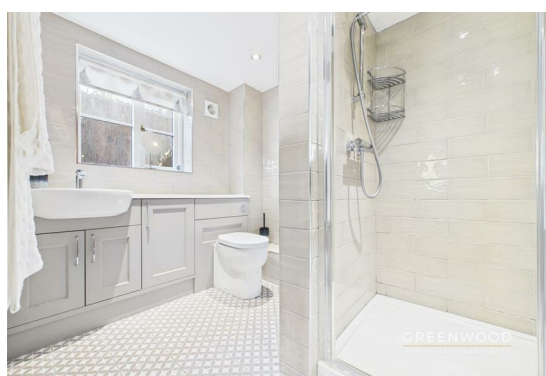
Spanning an impressive 875 square feet, this property is ideal for families or professionals seeking a peaceful retreat with easy access to local amenities.

Upon entering, you will be greeted by a spacious and inviting living area, perfect for relaxation or entertaining guests. The well-appointed kitchen provides ample space for culinary pursuits, making it a joy to prepare meals. Each of the three bedrooms is generously sized, offering a tranquil space for rest and rejuvenation.

The maisonette benefits from designated parking for one vehicle, ensuring that you have a secure and convenient place for your car. The surrounding area is known for its picturesque scenery and friendly community, making it an excellent choice for those who appreciate a rural lifestyle while still being within reach of urban conveniences.

With its attractive features and prime location, this property presents a wonderful opportunity for anyone looking to settle in Nayland. This maisonette is sure to impress. Do not miss the chance to make this lovely home your own.

Bear Street is situated in the heart of the picturesque village of Nayland, nestled within the Stour Valley—an Area of Outstanding



Natural Beauty. This celebrated landscape, known as Constable Country, is admired for its rural charm and tranquility, famously inspiring the works of artist John Constable. Nayland is one of Suffolk's most sought-after villages, offering an active community and excellent local amenities including a well-regarded primary school, traditional pub, restaurant, shops, post office, doctor's surgery, and both Church of England and Roman Catholic churches. Close to the Essex border, the village is surrounded by undulating countryside, rivers, and historic farmland, with numerous walks and bridleways ideal for outdoor pursuits. The larger towns of Colchester and Ipswich are within easy reach, providing extensive educational, recreational, and cultural facilities. Colchester—Britain's oldest recorded town—offers superb shopping, restaurants, theatres, and museums, while Ipswich, Suffolk's county town, provides further amenities and a vibrant waterfront. For commuters, Nayland is ideally located: regular trains from Colchester reach London Liverpool Street in about 50 minutes. The nearby A12 links London to Woodbridge and connects with the A14 for routes to Cambridge, the Midlands, and East Coast ports.