

PER CALENDAR MONTH

£995 Per Calendar Month

Rowlands Road

Worthing, BN11 3JU

PROPERTY SUMMARY

We are pleased to bring to the rental market this delightful one-bedroom ground floor flat, which offers a perfect blend of modern living and comfort. The property has been fully refurbished to a high standard, ensuring a contemporary and stylish environment for its residents.

Upon entering, you are greeted by a bright and airy open-plan kitchen and living area, designed to make the most of the space and light. This modern layout is ideal for both relaxation and entertaining, making it a wonderful home for individuals or couples. The kitchen is equipped with modern appliances and finished to a high spec. The shower room is tastefully designed, providing all the necessary amenities for your convenience. Gas central heating throughout.

One of the added features of this property is the private courtyard garden. Additionally, residents can take advantage of the communal south-facing front garden, which is a lovely spot to soak up the sun.

£30,000 annual income required for referencing purposes.

1



1



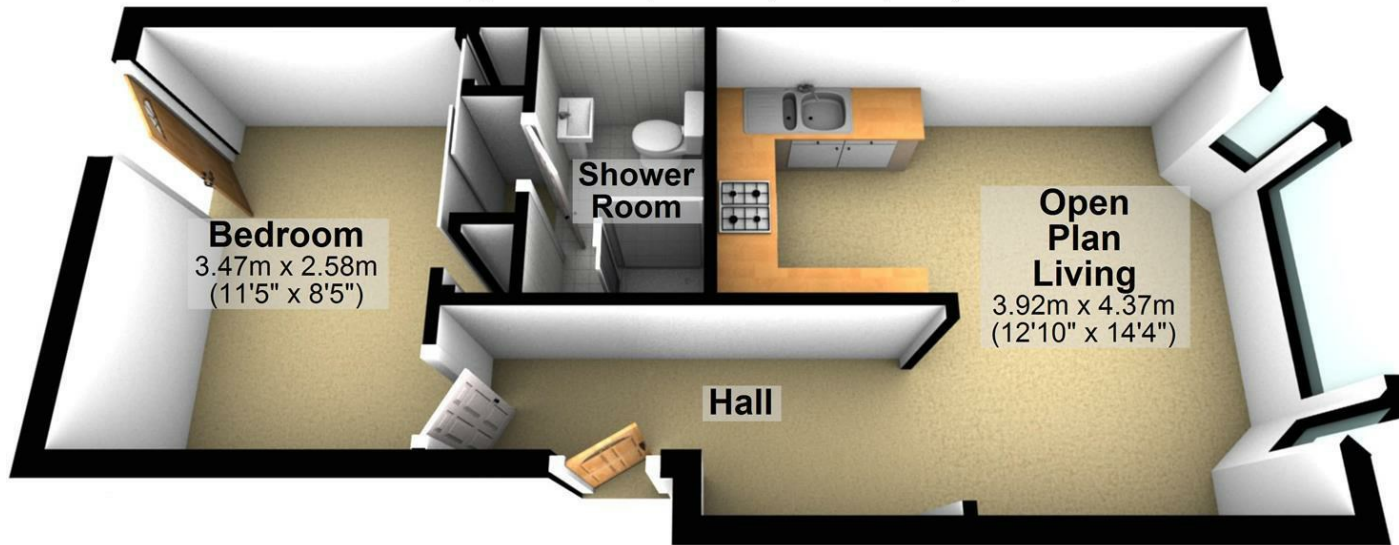
1





Ground Floor

Approx. 34.0 sq. metres (366.4 sq. feet)



Bedroom
3.47m x 2.58m
(11'5" x 8'5")

Shower Room

Open Plan Living
3.92m x 4.37m
(12'10" x 14'4")

Hall

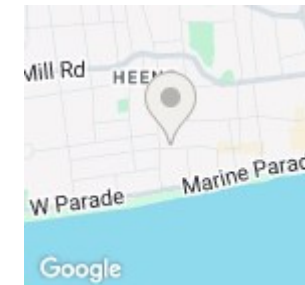
Total area: approx. 34.0 sq. metres (366.4 sq. feet)

LOCAL AUTHORITY
Worthing

TENURE

COUNCIL TAX BAND
A

VIEWINGS
By prior appointment only



Energy Efficiency Rating		Current	Potential
Very energy efficient - lower running costs			
(92 plus) A			
(81-91) B			
(69-80) C			77
(55-68) D			
(39-54) E		46	
(21-38) F			
(1-20) G			
Not energy efficient - higher running costs			
England & Wales		EU Directive 2002/91/EC	

Agents Note: Whilst every care has been taken to prepare these particulars, they are for guidance purposes only. All measurements are approximate and are for general guidance purposes only and whilst every care has been taken to ensure their accuracy, they should not be relied upon and potential buyers/tenants are advised to recheck the measurements



OFFICE ADDRESS
22 South Farm Road
Worthing
West Sussex
BN14 7AA

OFFICE DETAILS
01903 532225
worthing@localagent.co.uk
www.openhouseworthing.co.uk