



Buckhold Road, SW18

£440,000

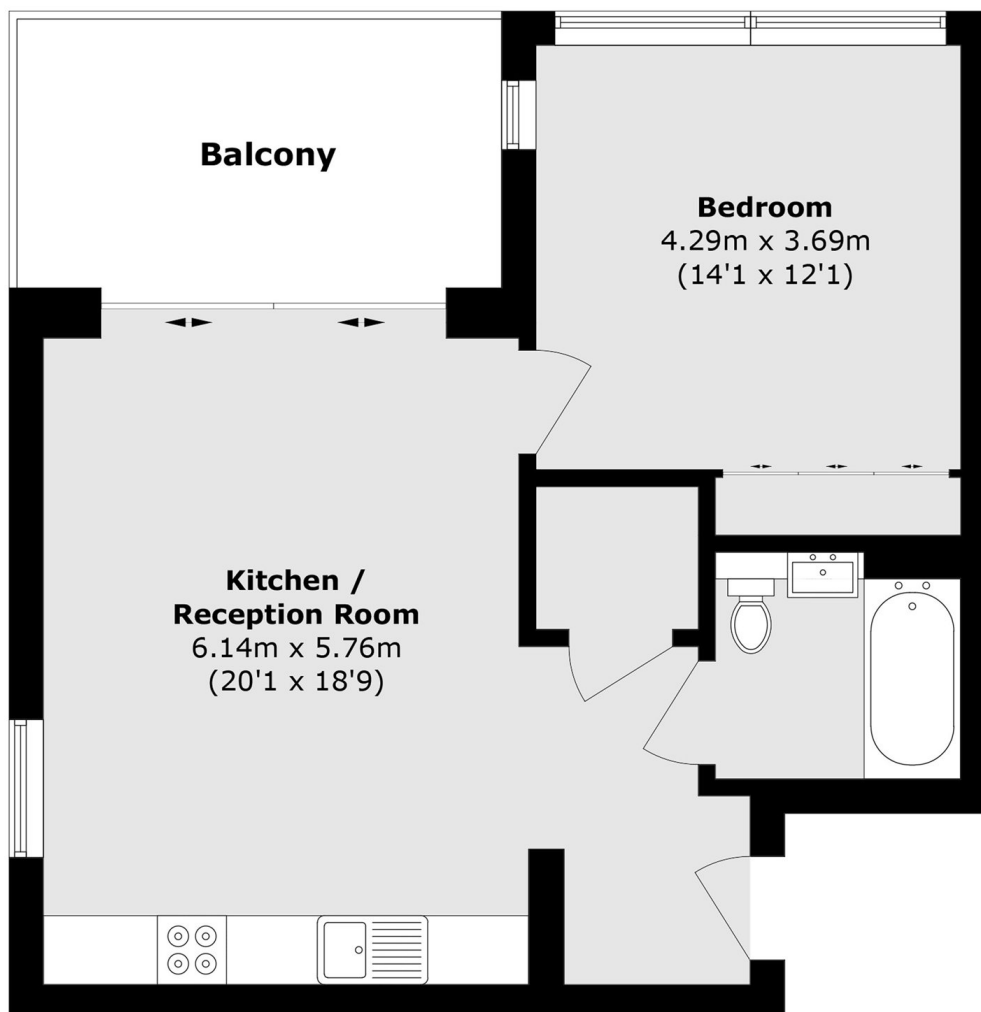
Located on the 16th floor and offering approximately 554 sq. Ft. Of internal living space, this apartment enjoys stunning views over London. The property features floor-to-ceiling windows, a generously sized bedroom with a walk-in wardrobe, and a stylish contemporary bathroom suite. The fully equipped kitchen is fitted with Siemens integrated appliances and opens onto a spacious reception and living room. A covered balcony, running the full width of the living area, provides fantastic views across the park and beyond.

The Bronze Building is conveniently located within a 0.7-mile radius of Wandsworth Town Station (National Rail) and 1 mile from Southfields Station (District Line), offering quick access to Central London and the West End. A regular bus service outside the development also provides excellent transport links. The Building further benefits include a seven-day-a-week concierge service, a residents' roof garden, and secure bicycle storage.

Features

- One Bedroom
- 16th floor
- Private Balcony
- Chain Free
- Concierge
- Stunning Views

Buckhold Road, London, SW18



Total area (approx.): 51.5 sq. m (554.3 sq. ft)
Balcony area (approx.): 9.9 sq. m (106.6 sq. ft)