

## Turnbridge Close, Brentry, BS10 6SY

Guide Price £310,000

3 1 1

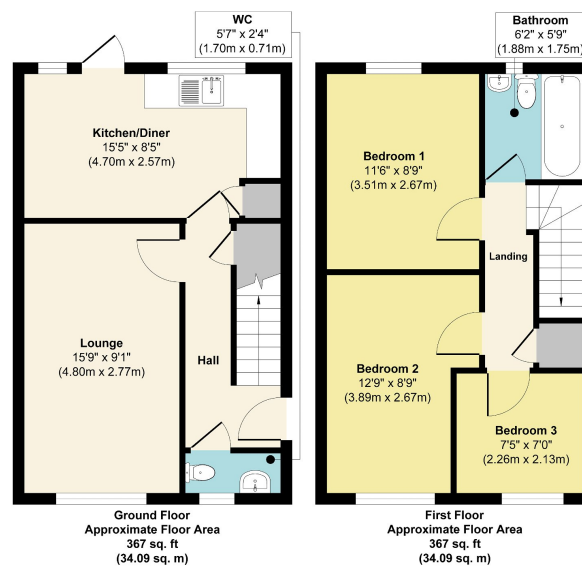


Offering bright and spacious living throughout is this beautifully presented three bedroom semi detached family home positioned in a small cul de sac in Brentry. The accommodation in brief comprises of an entrance hallway with stairs leading to the first floor level, doors to the lounge, kitchen diner, cloakroom and under stairs storage. To the first floor level a modern family bathroom, three bedrooms consisting of two double and a good size single bedroom. To the outside the rear garden is beautifully landscaped with a range of flower borders, pond, shed, gate to front and fully enclosed with wooden panelled fencing. The driveway offers parking for two cars to the side of the home.

145-147 East Street, Bedminster, Bristol, BS3 4EJ

## Key Features

- Modern Family Home
- Semi Detached
- Lounge
- Modern Family Bathroom
- Driveway To Side With Two Parking Spaces
- Three Bedrooms
- Kitchen Diner Onto The Garden
- Down Stairs Cloakroom
- Landscaped Rear Garden
- Close To Cribbs Causeway & Major Transport Links



Approx. Gross Internal Floor Area 734 sq. ft / 68.18 sq. m  
Illustration for identification purposes only, measurements are approximate, not to scale.  
Produced by Elements Property