



Porchester Square, W2

£450,000

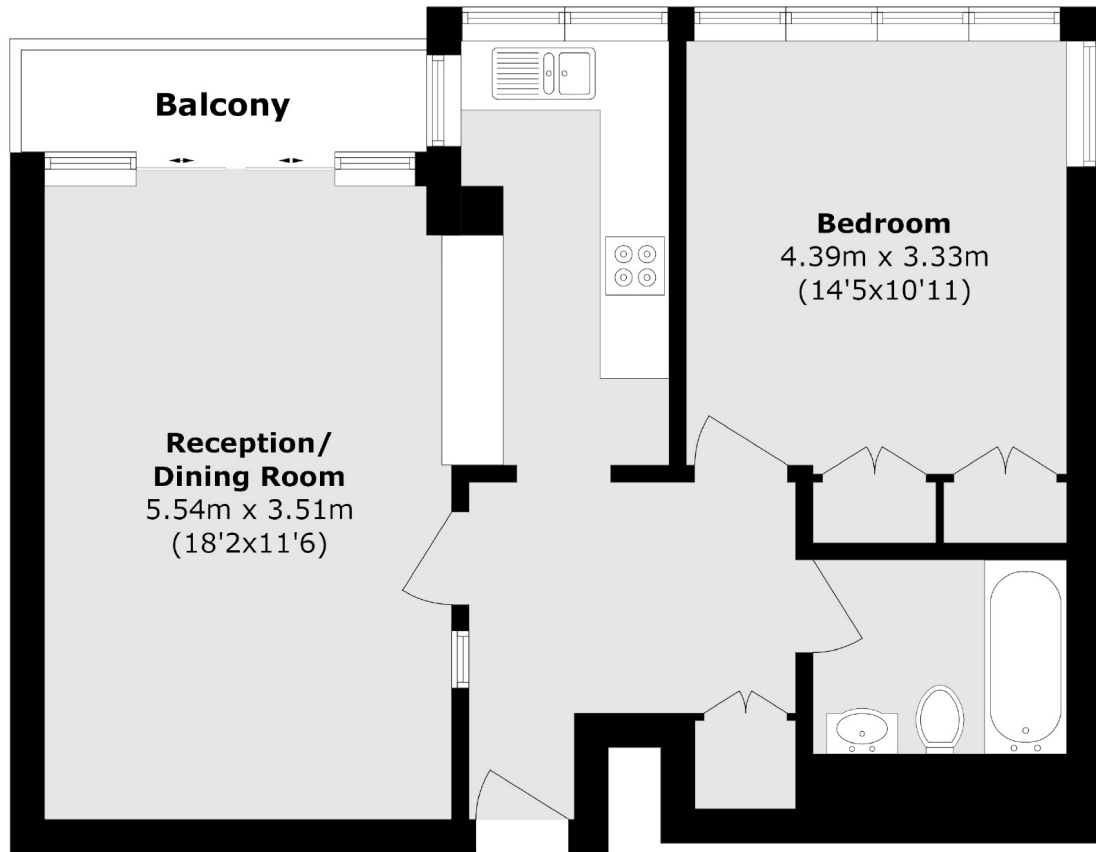
A spacious one bedroom apartment located in a purpose built building with lift access, concierge and on a garden square. The reception has room to dine and leads out to a private balcony through patio doors.

Porchester Square is ideally located near a large Waitrose supermarket and the shops of Westbourne Grove and Queensway. The closest transport links are Royal Oak and Bayswater whilst Paddington Station is also a short walk away.

Features

- One Bedroom
- Balcony
- Garden Square
- Lift
- Concierge
- Close To Amenities

Porchester Square, London, W2



Total area (approx.): 54.9 sq. m (590.9 sq. ft)
(Excluding Balcony)

Balcony area (approx.): 3.17 sq. m (34.1 sq. ft)