



## About Us

S J Smith Estate Agents was founded with a singular goal – to provide an unparalleled level of service and client care not readily available in our local market.

Our aim is to establish S J Smith as the premier estate agency in our area of operations. To that end, we blend proven real estate practices with cutting-edge technology to deliver the very best service possible.

However, our greatest asset is our exceptional staff, whose dedication and expertise set us apart from competitors.

Let's stay in touch!  
Get tips, sneak peeks, and early access to our newest properties!



[www.sjsmithestateagents.co.uk](http://www.sjsmithestateagents.co.uk)

## Client Testimonials

We recently bought a property through SJ Smith in Ashford and had a great experience from start to finish. Robert and Simon were both excellent – always polite, helpful, and quick to respond to any enquiries. Communication was clear and consistent throughout, and we really appreciated that there was no pressure or pushy sales tactics, unlike with some other agents we dealt with. We felt genuinely supported during the process and would highly recommend their service based on our experience.

*Tomasz Nowak*

Amazing, Outstanding customer service! We have sold and purchased 3 properties now with SJ past 12 years! This experience was however the best one to date! Would recommend this company to all wanting to sell or let there properties in the Ashford, Surrey or surrounding areas. Well done all involved! Top Work!!!

*Mark Sheldrake*

Absolutely brilliant service from all the staff working in SJ Smith Ashford that supported us during our house process. Couldn't fault anyone, they were a productive, helpful and friendly estate agents. We have been greatly appreciative of all the updates during the process and the constant reassurance they've provided us with along the journey.

*Dani Atkinson*

We sold our house with SJ Smiths and they were incredible throughout. Their photographer did a fantastic job at capturing our home from some tricky angles. Then when our house went on sale, they were very responsive and communicative throughout the viewings process, giving us feedback after each viewing. Our house sold within a week and we really do believe that was down to their hard work. We are so glad we chose S J Smiths and couldn't recommend them more.

Thanks so much guys.

*Holly*

Most honest and experienced estate agents in the area. Easy to work with. We had a tight deadline to meet in order to beat the stamp duty increase. I would definitely recommend going with them whether you have to sell or purchase. They work towards making things happen for you.

*Alekhyia Jarathi*



6 Station Approach  
Ashford  
Middlesex  
TW15 2QN

t: 01784 243333  
e: [ashford@sjsmithestateagents.co.uk](mailto:ashford@sjsmithestateagents.co.uk)  
[www.sjsmithestateagents.co.uk](http://www.sjsmithestateagents.co.uk)



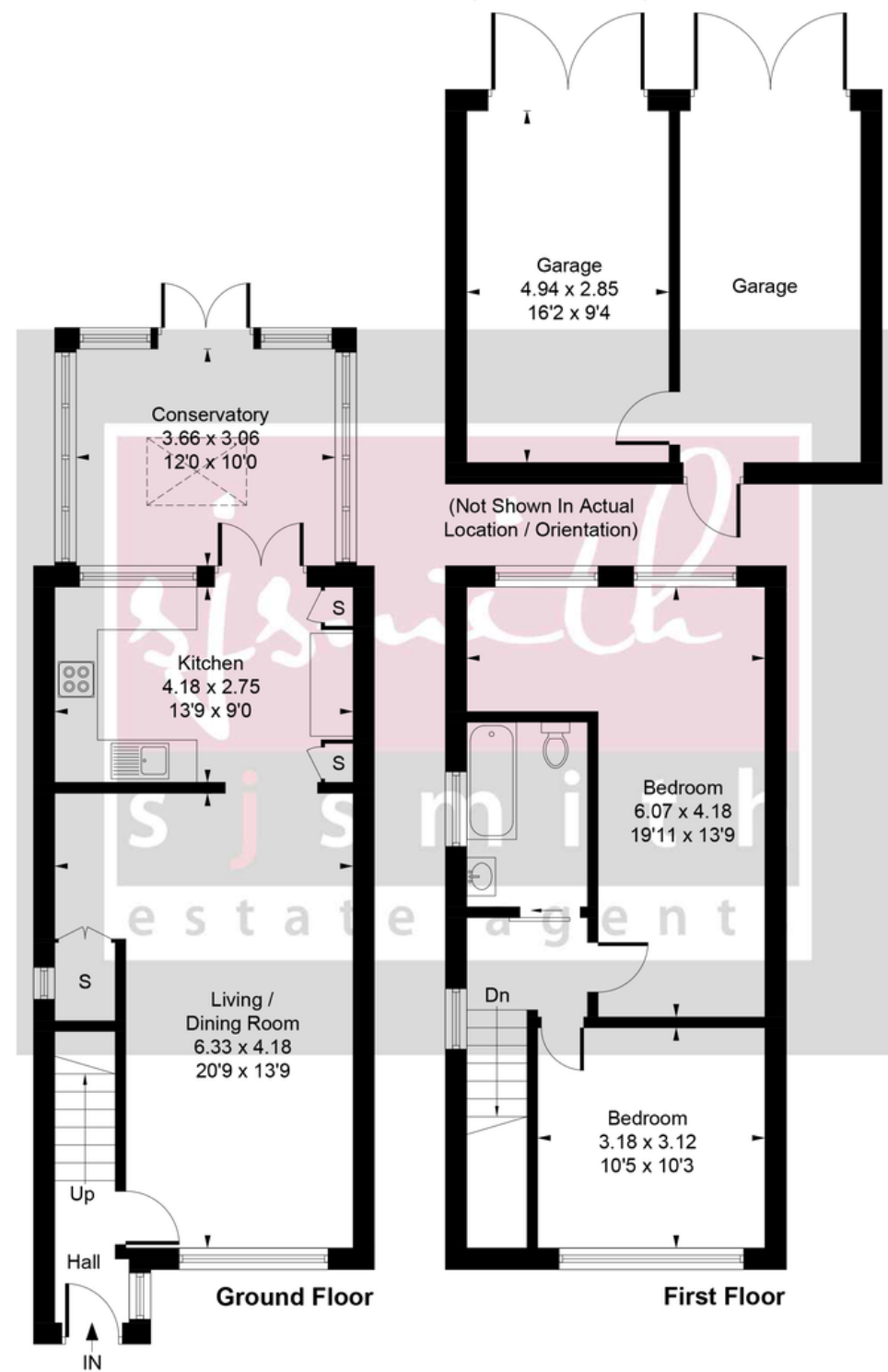
## 109 The Drive, Feltham, TW14 0AH

**£490,000 - Freehold**

The principal reception room is generously proportioned, comfortably accommodating separate sitting and dining areas. Large windows flood the space with natural light, highlighting the slate textured feature wall and hardwood flooring underfoot, creating a contemporary yet welcoming feel. To the rear sits a well appointed modern kitchen, fitted with a range of units, wooden finished worktops and a stylish ceramic splashback, with ample space for appliances. A Further footprint has been added to the ground floor and altered by the current owners as they have completely replaced the roof creating a stunning sunroom/ gym or home office as required. Upstairs, the first floor provides excellent accommodation for a growing family. The principal bedroom is a well proportioned double with ample space for freestanding furniture. The family bathroom has been recently upgraded to a particularly high standard, featuring a striking tiled finish, a rainfall shower positioned over the bath, vanity sink unit and WC, delivering a sleek and contemporary design. Bedroom two occupies the extended section of the house and is an impressive space, comfortably accommodating two beds, making it ideal for siblings or adaptable as a large double room if preferred. The rear garden is a true focal point and complements the stylish finish of the interior. A patio area adjoins the rear of the house, leading to a pathway that runs through a well established lawn towards the back of the garden. A durable pergola has been installed, complete with festoon lighting and a retractable cover, creating an inviting space for outdoor entertaining. Two sheds are positioned at the rear, both benefiting from light and power, and there is a service road running behind the garden for added convenience.



Approximate Gross Internal Area = 91.89 sq m / 989 sq ft  
 Garages = 28.54 sq m / 307 sq ft  
 Total = 120.43 sq m / 1296 sq ft



Whilst every attempt has been made to ensure the accuracy of the floor plan contained here, measurements of doors, windows, rooms and any other items are approximate and no responsibility is taken for any error, omission, or mis-statement.  
 This plan is for illustrative purposes only and should be used as such by any prospective purchaser.

- END OF TERRACE HOME
- TWO DOUBLE BEDROOMS
- STUNNING BATHROOM
- OFF STREET PARKING
- MODERN FITTED KITCHEN
- STYLISH REAR GARDEN
- CLOSE TO LOCAL AMENITIES
- EPC RATING BAND D



### Council Tax

Hounslow Borough Council, Tax Band D being £2,085.82 for 2025/26 Council tax bands can be reassessed by local authorities at any point, the council tax band is only taken at point of listing and should not be relied on as current banding

Tenure: Freehold

**Agent note** Under Consumer Protection Regulations we have endeavoured to make these details as reliable and as accurate as possible. The accuracy is not guaranteed and does not form part of any contract as the details are prepared as a general guide. We have not carried out a detailed survey or tested any appliances, specific fittings, or services (gas/electric). Room sizes should not be relied upon for carpets or furnishing nor should internal photos as these are intended as a guide only and may have changed since. It should not be assumed that any furniture/fittings are included. Lease, ground rent, maintenance or any other charges have been provided by the vendor and their accuracy cannot be guaranteed. We always advise a buyer should obtain verification on points via a solicitor.