



W WESTWOODLEBER

W WESTWOODLEBER
LET US GUIDE YOU HOME

North Road, Hoddesdon, EN11 8JF
Offers over £350,000



North Road, Hoddesdon, EN11 8JF

Westwood Leber are delighted to bring to the market this well-maintained three-bedroom terraced home offering bright and well-proportioned accommodation arranged over two floors, positioned along the popular North Road in Hoddesdon.

The ground floor features a welcoming living room to the front of the property, leading through to a spacious dining room, providing excellent flexibility for both everyday living and entertaining. To the rear, a fitted kitchen offers practical storage and workspace, complemented by a ground floor bathroom, creating a functional and well-laid-out living space.

Upstairs, the property offers three well-sized bedrooms, including two generous doubles and a third bedroom ideal as a nursery, home office, or dressing room. The layout is efficient and well balanced, maximising space throughout the home.

The property has been well maintained and offers a fantastic opportunity for a buyer to move straight in, while also providing scope to further enhance and personalise if desired.

North Road is conveniently positioned within easy reach of Hoddesdon town centre, local shops, schools, and amenities, with excellent transport links including easy access to the A10, connecting to London, Hertford, and surrounding areas.

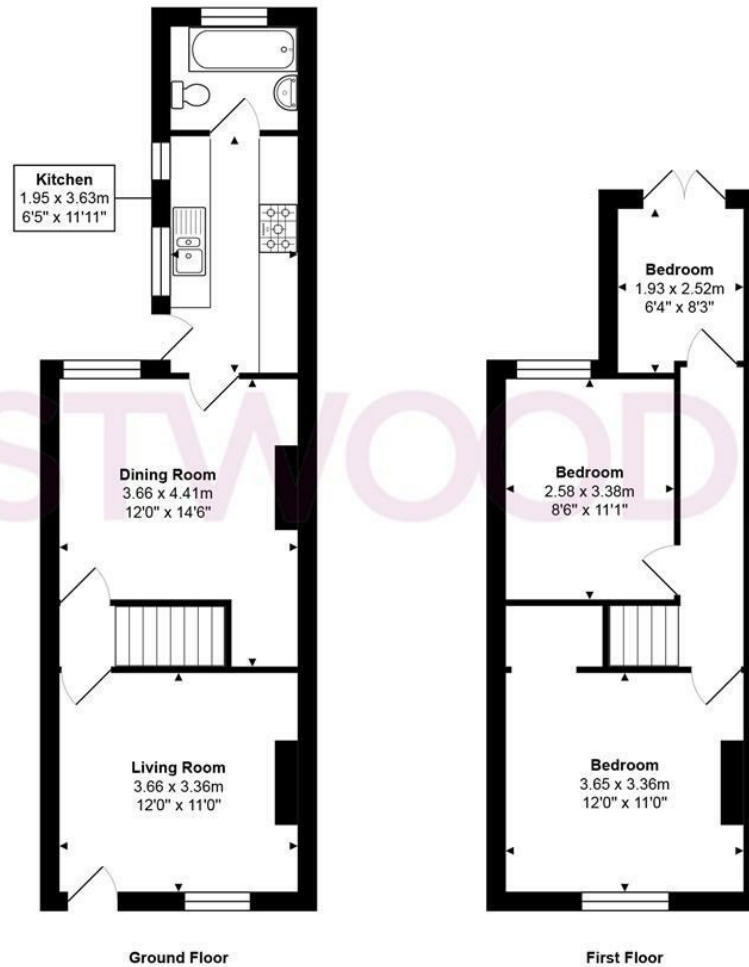
A well-presented home in a convenient location, ideal for both lifestyle buyers and investors looking for a strong long-term addition to their portfolio.



 WESTWOODLEBER

 WESTWOODLEBER
LET US GUIDE YOU HOME

WL WESTWOODLEBER



Ground Floor

First Floor

Total Area: approx. 73.2 m² ... 788 ft²

THE FLOORPLAN IS FOR ILLUSTRATIVE PURPOSES ONLY AND IS NOT TO SCALE.
Measurements and features are approximate and may differ from the actual property. Verify all details independently; no liability is accepted for errors or omissions.

Property marketing provided by www.fotomarketing.co.uk



WESTWOODLEBER



WESTWOODLEBER



WESTWOODLEBER



WESTWOODLEBER



