



OSIERS ROAD

London SW18



OSIERS ROAD LONDON, SW18

A contemporary three-bedroom home with allocated underground parking, located moments from the River Thames and Wandsworth Park.



3



3



1

EPC

C

Local Authority: London Borough of Wandsworth

Council Tax band: G

Tenure: Leasehold with approximately 129 years remaining

Ground rent: £650 per annum

Service charge: £4,437.24 per annum, reviewed every year, next review is August 2026

Asking Price: £1,350,000



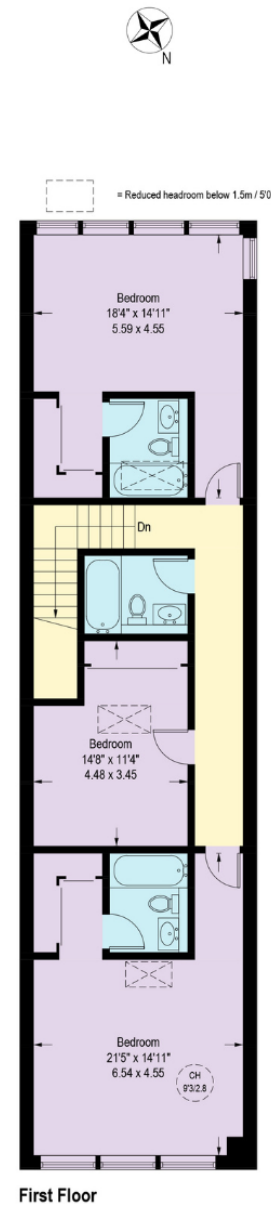
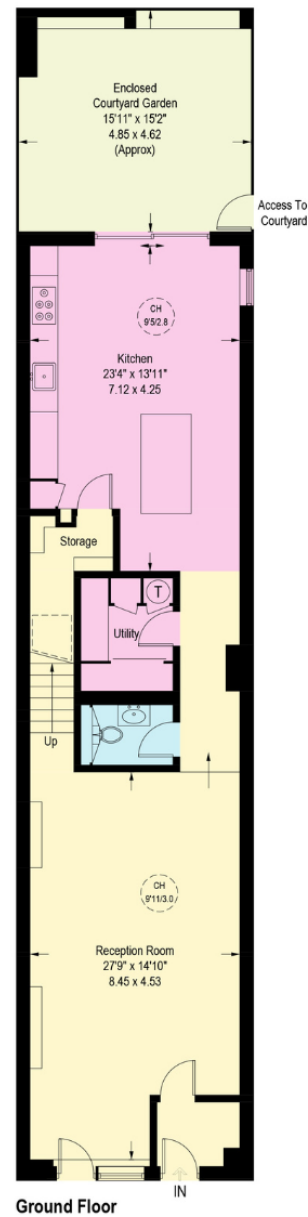
A MODERN THREE BEDROOM HOUSE WITH SECURE PARKING

This impressive two-storey house, spanning approximately 1,960 square feet, has been thoughtfully redesigned by an award-winning architect to create a modern home that combines style with practicality. This property is ideally positioned moments from the River Thames and Wandsworth Park. On the ground floor, a spacious reception room flows beautifully into a bright kitchen-dining space, with sliding doors onto a private south-west facing garden. A utility room and guest cloakroom complete this level. Upstairs are three double bedrooms, all with fitted wardrobes. Two benefit from en suite bathrooms, the third served by a separate family bathroom. Please Note: We have made reasonable enquiries regarding the fire safety (including, but not limited to, the external wall of the building), but have been advised that there is no information available. You should ensure you take independent professional advice and carry out your own investigations before making an offer on this property.









Approximate Gross Internal Area = 182,1 sq m / 1960 sq ft

This plan is for layout guidance only. Not drawn to scale unless stated. Windows and door openings are approximate. Whilst every care is taken in the preparation of this plan, please check all dimensions, shapes and compass bearings before making any decisions reliant upon them. (ID767266)

We would be delighted
to tell you more.

Sarah Gerrett

+44 7977 728 686

sarah.gerrett@knightfrank.com

Knight Frank Battersea & Clapham

346 Queenstown Road

SW11 8BY

knightfrank.co.uk

Your partners in property

1. Particulars: These particulars are not an offer or contract, nor part of one. You should not rely on statements given by KF West Midlands Ltd., in the particulars, by word of mouth or in writing ("information") as being factually accurate about the property, its condition or its value. Neither KF West Midlands Ltd, nor any joint agent has any authority to make any representations about the property, and accordingly any information given is entirely without responsibility on the part of KF West Midlands Ltd. 2. Material Information: Please note that the material information is provided to KF West Midlands Ltd, by third parties and is provided here as a guide only. While KF West Midlands Ltd, has taken steps to verify this information, we advise you to confirm the details of any such material information prior to any offer being submitted. If we are informed of changes to this information by the seller or another third party, we will use reasonable endeavours to update this as soon as practical. 3. Photos, Videos etc: The photographs, property videos and virtual viewings etc. show only certain parts of the property as they appeared at the time they were taken. Areas, measurements and distances given are approximate only. 4. Regulations etc: Any reference to alterations to, or use of, any part of the property does not mean that any necessary planning, building regulations or other consent has been obtained. A buyer must find out by inspection or in other ways that these matters have been properly dealt with and that all information is correct. 5. Fixtures and fittings: A list of the fitted carpets, curtains, light fittings and other items fixed to the property which are included in the sale (or may be available by separate negotiation) will be provided by the Seller's Solicitors. 6. VAT: The VAT position relating to the property may change without notice. 7. To find out how we process Personal Data, please refer to our Group Privacy Statement and other notices at <https://www.knightfrank.com/legals/privacy-statement>.

Particulars dated May 2024. Photographs and videos dated May 2024. All information is correct at the time of going to print. KF West Midlands Limited, a company registered in England and Wales with registered number 13144773. Our registered office is at 9 College Hill, Shrewsbury, Shropshire, SY1 1LZ. KF West Midlands Limited is an independently owned member of the Knight Frank Network operating under licence from Knight Frank LLP