



## Moffat Road, SW17

£675,000

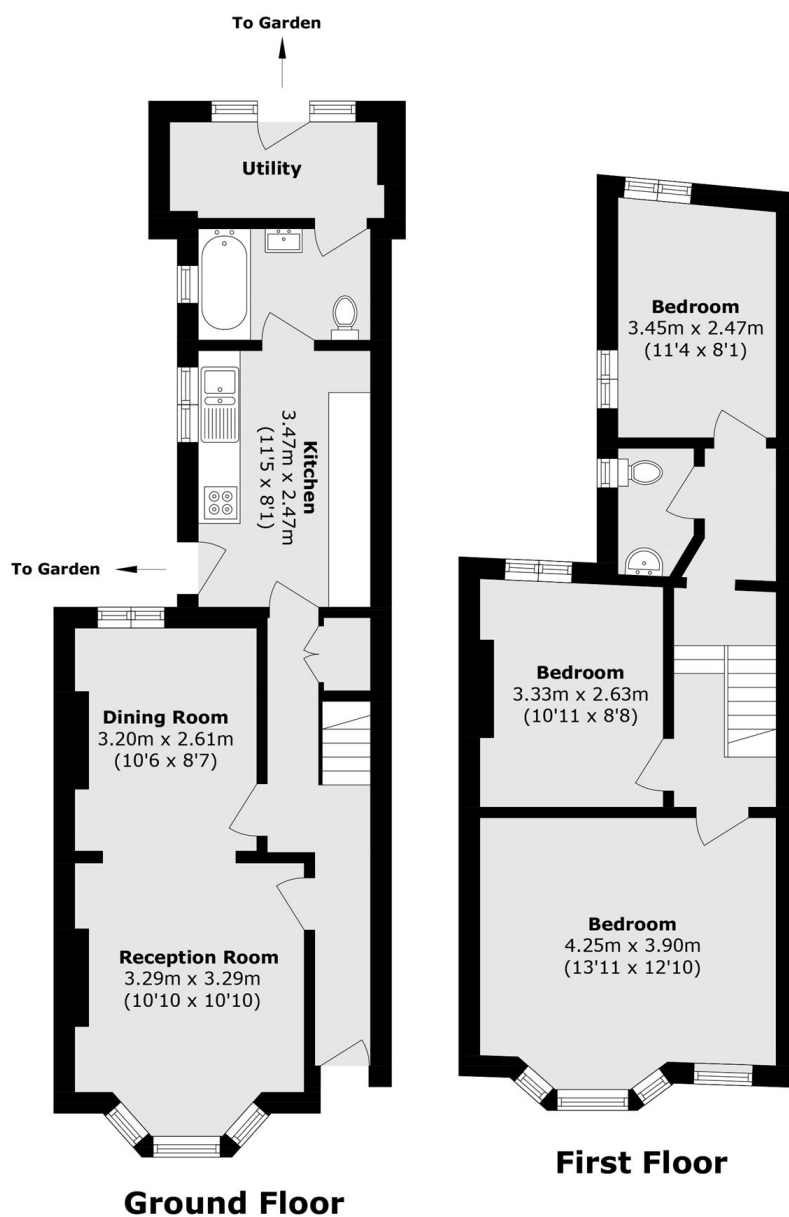
A mid terrace freehold home in the heart of Tooting spanning two floors with a double reception room, three bedrooms, a large kitchen leading to a private garden and a three piece bathroom. The property is a blank canvas and offers huge potential for alterations and extending (STPP).

Moffat Road is enviably located moments from Tooting High Street with the many shops, bars, eateries of Tooting Market on the doorstep. The vast bus links and easy access to the City are also a short stroll away via Tooting Broadway Underground Station.

### Features

- Freehold House
- Chain Free
- Three Bedrooms
- Desirable Location
- Private Garden
- Double Reception Room

# Moffat Road, London, SW17



Total area (approx.): 89.9 sq. m (967.7 sq. ft)