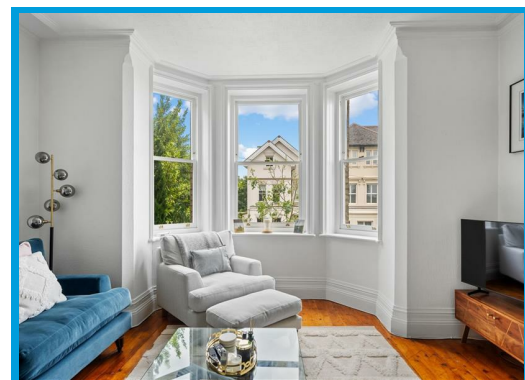
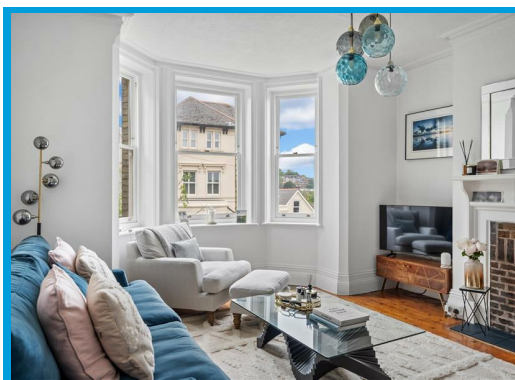
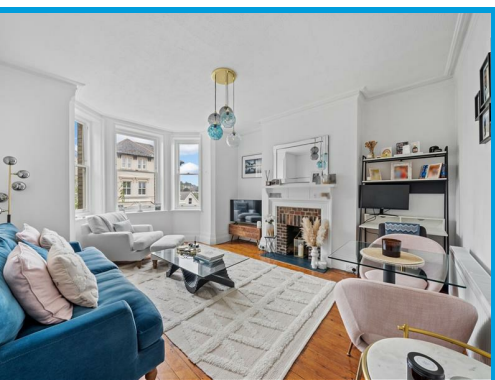




Sydney Road, Guildford, Surrey GU1 3LL

Guide Price £315,000

SHARE OF FREEHOLD- Located a short walk to Guildford High Street within a beautiful double fronted Victorian building, this stunning one bedroom apartment offers spacious and well presented accommodation throughout and a walled communal garden. Offered with no onward chain.



Description

Offered with no onward chain. Located on a quiet residential road only moments walk to Guildford High Street, this well presented one bedroom apartment is positioned within a beautiful double fronted Victorian building and offers spacious and well presented accommodation throughout. The property is accessed through a secure communal entrance hall and is located on the first floor. The accommodation comprises an entrance hall, a large lounge with bay window, a master bedroom, family bathroom with shower with underfloor heating. and a modern kitchen with appliances.

The apartment has character features throughout, including high ceilings and large sash windows that have recently been replaced period styled double glazing. You also have an amazing view of the Guildford Cathedral in the distance.

The property benefits further from having a walled rear communal garden with a private shed, ideal for storing bikes.

This is a truly unique property that is being sold with a share of the Freehold.

