

Franklyn
James



Moro Apartments, New Festival Avenue, E14 6FT

£370,000

Franklyn
James



Moro Apartments, New Festival Avenue, E14 6FT

£370,000

- Popular New Festival Quarter
- Residence Gym
- Concierge
- Private terrace
- Roof top garden
- Easy access into the City and Canary wharf

EPC rating- C
Tax band- C



A luxurious one-bedroom apartment located within the popular New Festival Quarter. Its prime location ensures easy commuting to Canary Wharf and the City.

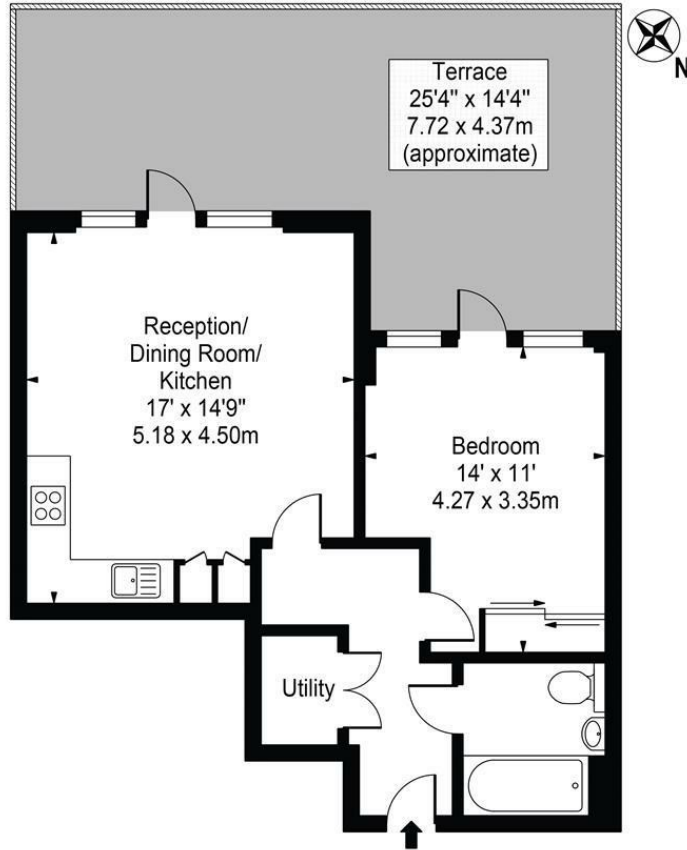
This residence features a generously proportioned open-plan reception room seamlessly integrated with a fully equipped kitchen. Additionally, it comprises a spacious bedroom and a well-appointed and newly updated family bathroom. The reception room effortlessly extends to a sizable private terrace, offering an ideal setting for both relaxation and entertainment.

Moreover, residents benefit from ample storage solutions and a plethora of amenities within the complex, including a state-of-the-art gym, concierge service, a serene rooftop garden, and secure bicycle storage facilities.

Ideally situated just a stone's throw away from Westferry DLR Station, the Crossrail Station at Canary Wharf, and Canary Wharf Jubilee Line, commuting couldn't be more convenient.

Moro Apartments

Approx. Gross Internal Area 529 Sq Ft - 49.15 Sq M

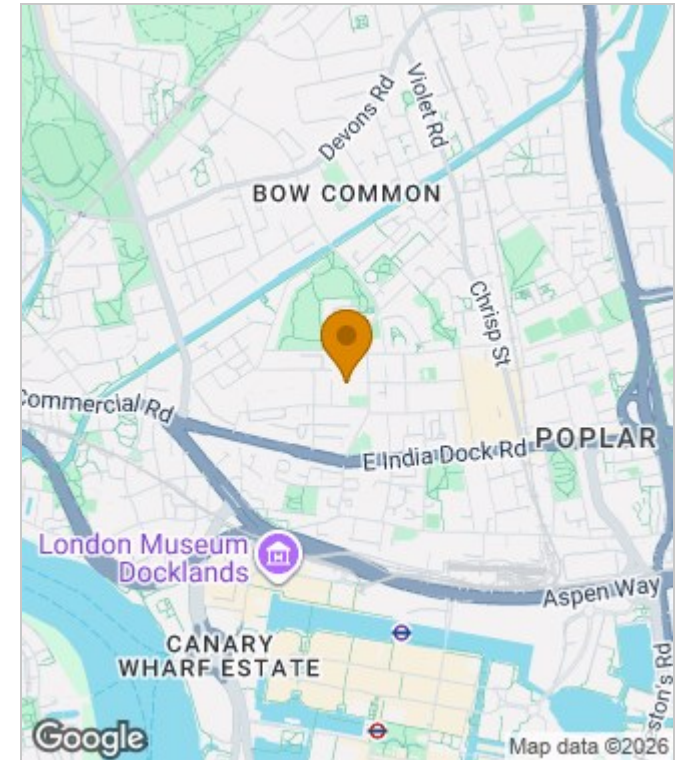


First Floor

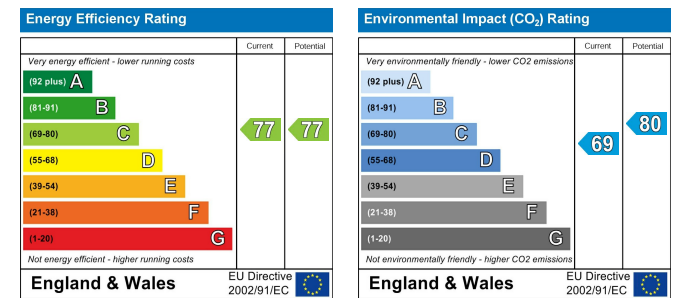
For Illustration Purposes Only - Not To Scale

This floor plan should be used as a general outline for guidance only and does not constitute in whole or in part an offer or contract. Any intending purchaser or lessee should satisfy themselves by inspection, searches, enquiries and full survey as to the correctness of each statement. Any areas, measurements or distances quoted are approximate and should not be used to value a property or be the basis of any sale or let.

Area Map



Energy Performance Graph



These particulars, whilst believed to be accurate are set out as a general outline only for guidance and do not constitute any part of an offer or contract. Intending purchasers should not rely on them as statements of representation of fact, but must satisfy themselves by inspection or otherwise as to their accuracy. No person in this firm's employment has the authority to make or give any representation or warranty in respect of the property.