

SIMPLE LIFE

SIMPLE LIFE



Whitwell Drive, Dracan Village at Drakelow Park, Burton-On-Trent DE15

£975 Per Month

Welcome to Dracan Village at Drakelow Park, an emerging suburban neighbourhood located three miles south of Burton town centre.

The Irwell is a stunning home built with you in mind. Entering through the front door you are welcomed by an attractive kitchen with a range of contemporary fitted units and modern integrated appliances. Heading through the hallway will take you into a spacious living/dining area which is finished with beautiful wooden flooring and French windows which open out onto your private rear garden. The lower floor also benefits from a storage cupboard and W/C.

Upstairs you will find two spacious double rooms, the master bedroom including a fitted, mirrored wardrobe, whilst the second bedroom benefits from having built in storage space. There is also a main bathroom equipped with a bath and shower.

The development provides excellent locational advantages, Burton town centre has plenty to offer with national retailers and brands such as Next, Primark, H&M, Boots, Cineworld and many more. Alongside this, Branston Water Park is located just one mile from the site, allowing residents to enjoy nature walks, trails and wildlife reserve.

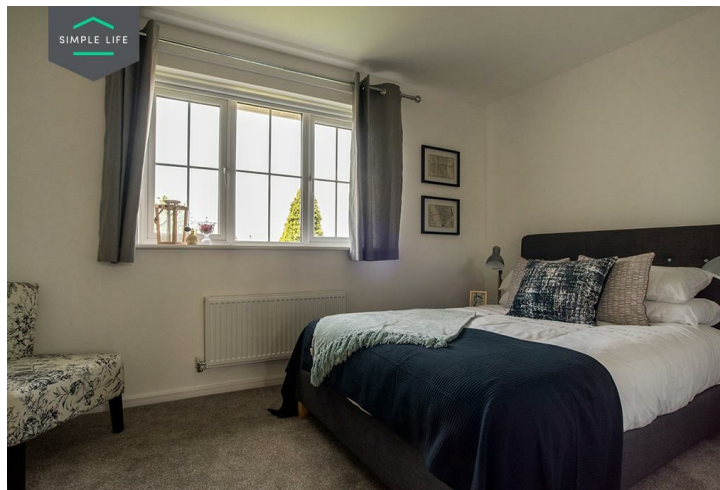
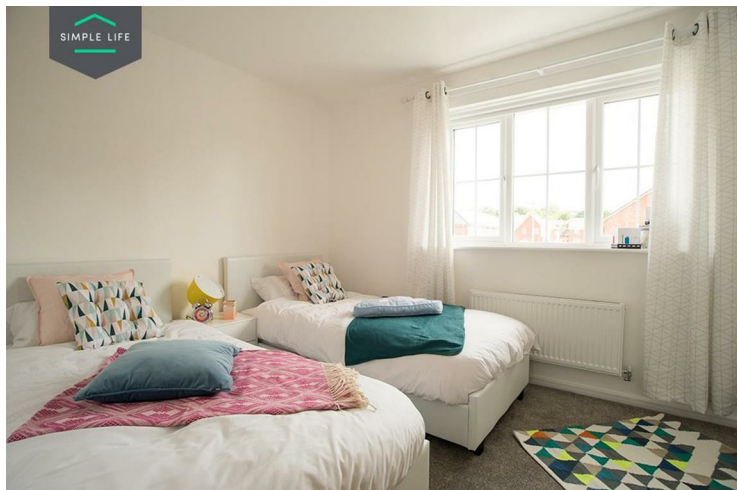
Dracan Village benefits from great road and railway connectivity. The site is located 14 miles away from the M6 and 18 miles away from the M1. In addition, there will be a new link road built crossing to the A38. Burton train station is located less than three miles away from the development, providing regular connections to Birmingham New Street, Derby and Nottingham twice hourly.

Well served by both primary and secondary schools including the immediate vicinity Riverview Primary, Edge Hill Academy, Violet Way academy, Paulet High School and Burton & South Derbyshire College.

To access the site, use postcode DE15 9UA.

Deposit: £1120
Holding deposit £220
Council Tax Band: B
Unfurnished
Available 30th January 2026





Key Features

- Car Parking Space
- Dishwasher
- Modern kitchen worktops and units
- Wood-effect flooring in the kitchen
- Security Alarm
- Fridge-freezer
- Carpets up the stairs and in the bedrooms
- Private back garden

Location

