



Computer generated images are indicative only.

1A Pembridge Gardens | | London | W2 4EN

£8,350 Per month

ESON2
REAL ESTATE

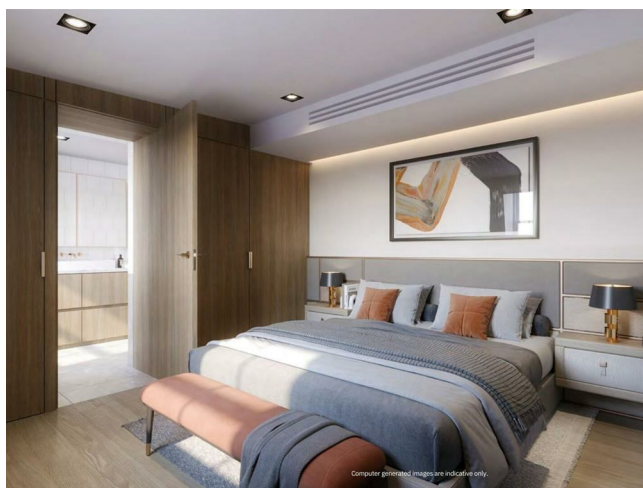
Key features

- Fourth floor penthouse
- Signature glazed rooflight
- Miele appliances & Grohe fixtures
- Underfloor heating & comfort cooling
- Moments from Notting Hill Gate station
- Designed by Stiff + Trevillion

Description

A rare and exceptional penthouse occupying the fourth floor of The Pembridge one of Notting Hill's most distinguished new addresses. Spanning 1,536 sq ft, this extraordinary residence offers a sweeping open-plan living space bathed in natural light through a signature glazed skylight, dual-aspect windows and a dual-aspect outlook across London's most coveted rooftops.

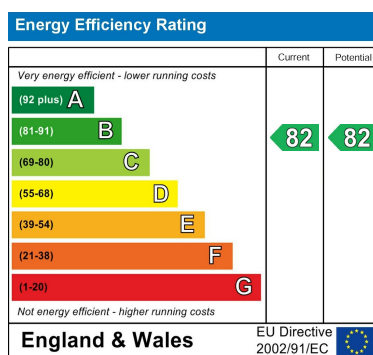
Directions



Positioned at the pinnacle of The Pembridge, a landmark development by award-winning architects Stiff + Trevillion, this penthouse suite represents a defining opportunity to acquire one of Notting Hill's finest residences.



Computer generated images are indicative only.



Council Tax Band H EPC Rating B



301 Michelin House 81 Fulham road
London
Greater London
SW3 6RD
07920 257649
fayeel@eson2.co.uk
www.eson2.co.uk