



CONINGHAM ROAD, W12

£625,000

A bright and well-presented two double bedroom split level flat set on the top floors of an attractive Victorian conversion in the heart of Shepherd's Bush.

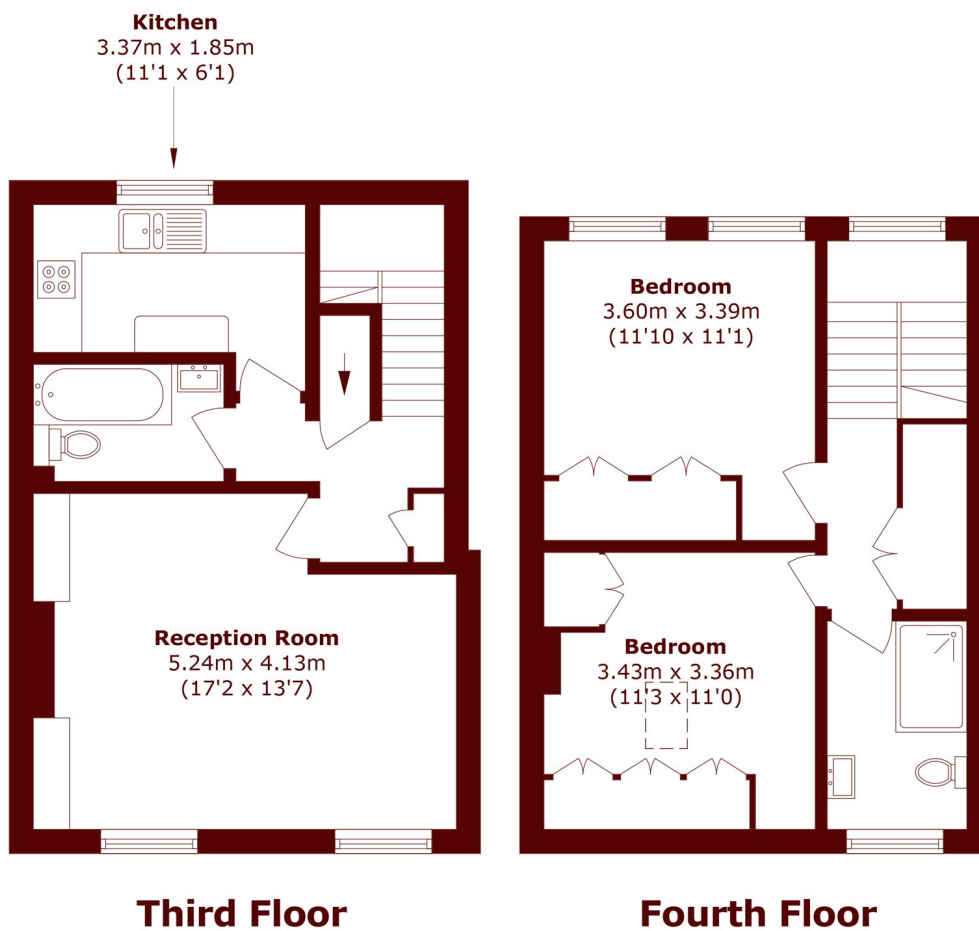
Two Bedrooms
Two Bathrooms
Split Level

Separate Kitchen
Naturally Bright
Tree Lined Street

@marshandparsons
marshandparsons.co.uk

MARSH &
PARSONS

STEP INSIDE CONINGHAM ROAD



Total area (approx.): 78.1 sq. m (840.6 sq. ft)

Brook Green
020 7605 7765

Energy Rating: We aim to make our particulars both accurate and reliable. However, they are not guaranteed; nor do they form part of an offer or contract. If you require clarification on any points then please contact us, especially if you're traveling some distance to view. Please note that appliances and heating systems have not been tested and therefore no warranties can be given as to their good working order

MARSH &
PARSONS