

A modern, bright apartment interior. The living area features a grey sectional sofa with patterned cushions, a side table with a lamp, and two framed artworks on the wall. The dining area has a dark table with chairs. The kitchen is visible in the background with white cabinetry and a dark countertop. The floor is made of light-colored wood.

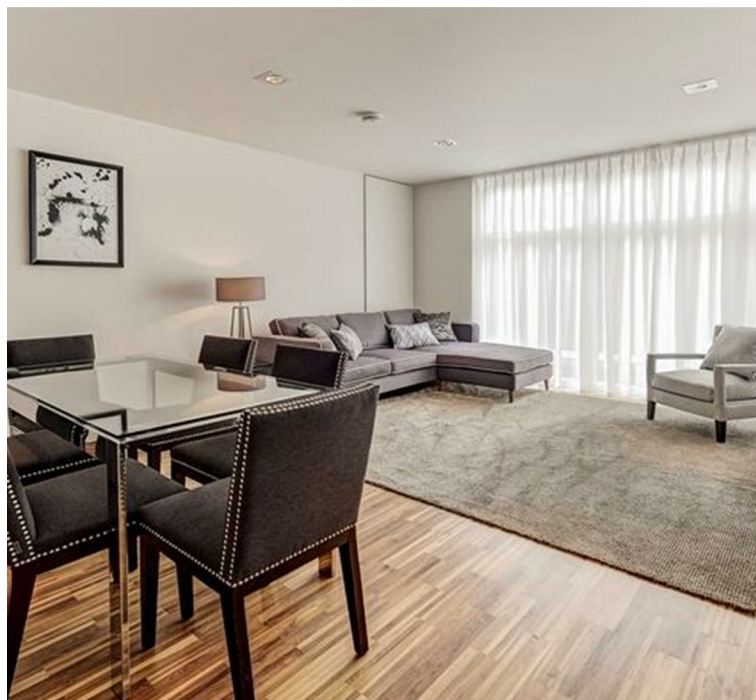
STURGES  
LONDON

161 Fulham Road, South Kensington London

£5,634 Per month



- Fantastic Two Double Bedroom Apartment
- Located in the Heart of South Kensington
- Private Portered Building with Lift Service, CCTV & Video Entry
- Available Furnished or Unfurnished
- Neff Appliances
- Ample Storage Space
- Dedicated Property Manager
- Pet Friendly





## 161 Fulham Road, London

A large, two double bedroom apartment in a private portered building with lift service located in the heart of South Kensington.

The apartment comprises a fantastic 21ft reception area perfect for entertaining, leading to an open plan modern kitchen with fully integrated Neff appliances and stone work tops. Floor to ceiling windows across one side of the reception room bring a wonderful sense of space to the room and fill the property with an abundance of natural light.

Both double bedrooms offer ample storage space, with the master bedroom suite comprising en-suite bathroom with a raindrop shower and automatic sensor lighting. The family bathroom features a raindrop shower over the bath, with automatic lighting.

Available Furnished or Unfurnished

**Local Authority:**

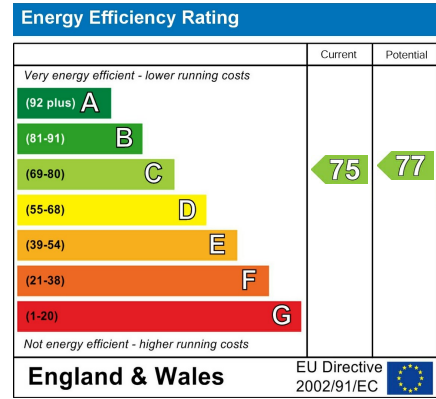
**Council Tax Band:** G

**Lease:** Add text here

**Service Charges:** Add text here

**Ground Rent:** Add text here

**STURGES**  
LONDON



## For more information, please contact:

(Tel) 020 3393 2002

(Email) [hello@sturgeslondon.co.uk](mailto:hello@sturgeslondon.co.uk)

668 Fulham Road, Parsons Green, London, SW6 5RX

[sturgeslondon.co.uk](http://sturgeslondon.co.uk)

Agents Note: Whilst every care has been taken to prepare these particulars, they are for guidance purposes only. All measurements are approximate and for general guidance purposes only and whilst every care has been taken to ensure accuracy, they should not be relied upon and potential buyers/tenants are advised to recheck the measurements.