



Upper  
Maisonette

Jan Forster

FOR SALE

0203 236 3079

janforster.co.uk

 Jan Forster

 Jan Forster

Linskill Terrace | | North Shields | NE30 2EL

Price £275,000



 Jan Forster



- First Floor Maisonette
- Three Bedrooms
- Rear Yard
- Desirable Location
- Transport Links
- Well Presented
- Two Bathrooms
- No Onward Chain
- Local Facilities
- Council Tax Band: A



 Jan Forster



 Jan Forster



Jan Forster Estates are delighted to welcome to the sales market this well-presented, three-bedroom maisonette, boasting period features coupled with modern living.

Positioned on the ever-popular Linskill Terrace, North Shields, the property is available with no onward chain and is suitable for a wide range of buyers, including growing families, professionals, and investors alike.

The accommodation is accessed via a private entrance with stairs leading to the first-floor landing. The first floor briefly comprises a bright and spacious lounge, separate dining room, a well-appointed kitchen fitted with shaker-style units, an integrated oven and hob, and a farmhouse sink, and a modern bathroom WC with an overhead shower. To the second floor are two good-sized bedrooms, with the principal bedroom benefitting from an en-suite shower room. Further benefits include gas central heating and double glazing. Externally there is a private yard to the rear.



The property enjoys an exceptional location, close to Northumberland Park and Tynemouth Golf Club, perfect for those who love scenic countryside walks and outdoor leisure. The vibrant Quayside and the award-winning Long Sands beach are just a short distance away, adding to the area's natural and social charm. A wide range of local amenities, including popular cafés, bars, and restaurants, are all within easy reach. Excellent transport connections are also nearby, with the A1058 Coast Road providing a direct route into Newcastle city centre, alongside convenient access to prime bus routes and Metro services. For families, the area is well served by a selection of highly regarded schools, making it an ideal place to call home.

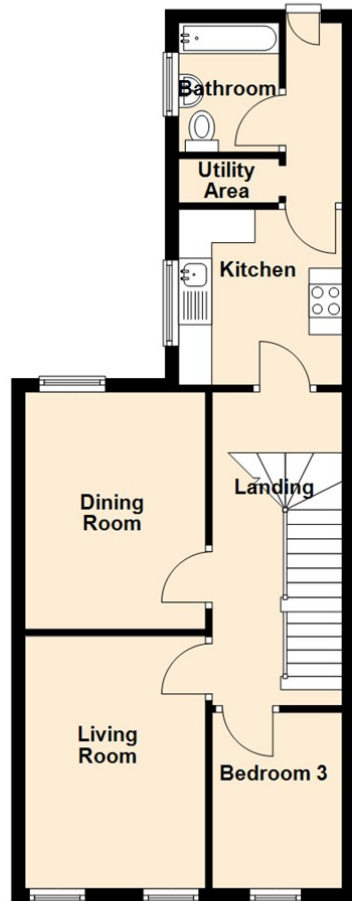
Early viewings are strongly advised on this delightful property. For more information, please call our sales office on 0191 236 2070.

#### Tenure

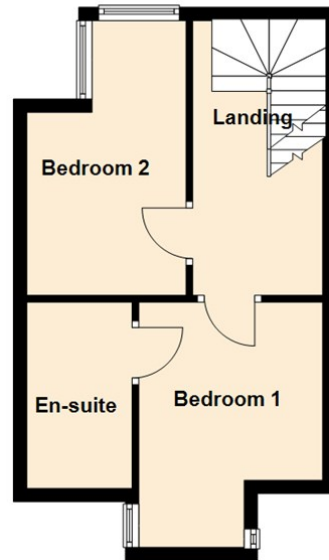
The agent understands the property to be freehold. However, this should be confirmed with a licensed legal representative.

Council Tax Band: A

**First Floor**



**Second Floor**



Lounge 15'3" x 12'9" (4.67 x 3.91)

Kitchen 10'1" x 8'4" (3.08 x 2.56)

Dining Room 12'7" x 15'7" (3.85 x 4.75)

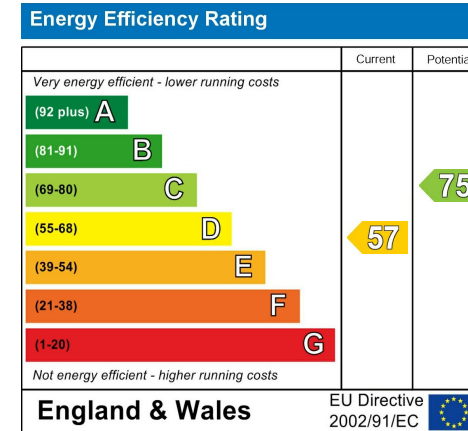
Bedroom One 14'10" x 12'6" (4.52m x 3.81m )

Bedroom Two 15'4" x 12'6" (4.67m x 3.81m )

Bedroom Three 11'5" x 7'3" (3.48 x 2.21)

## The difference between house and home

You may download, store and use the material for your own personal use and research. You may not republish, retransmit, redistribute or otherwise make the material available to any party or make the same available on any website, online service or bulletin board of your own or of any other party or make the same available in hard copy or in any other media without the website owner's express prior written consent. The website owner's copyright must remain on all reproductions of material taken from this website.



[www.janforsterestates.com](http://www.janforsterestates.com)

**Contact Us: 0191 236 2070**

