



Blackfriars Road, SE1

£1,100,000

An immaculately presented 5th floor apartment with stunning skyline views, a very large open plan living room & kitchen, a terrace with ample room for dining, two double bedrooms, two bathrooms & an additional balcony accessed via both bedrooms.

Globe View House is enviably located on Blackfriars Road, just across from Southwark Station, with Blackfriars, Waterloo and the South Bank all just beyond, along with its numerous amenities and attractions.

Features

- Three Double Bedrooms
- Two Bathrooms
- Two Private Balconies
- High Spec Finish
- Residents' Porter
- Low Service Charge



Blackfriars Road, SE1

With floor to ceiling windows in every room and open views on both sides, there is a wonderful sense of space and light. From the living room and third bedroom there are fantastic views of the Shard, whilst the master bedroom and second bedrooms look over Nelson Square.

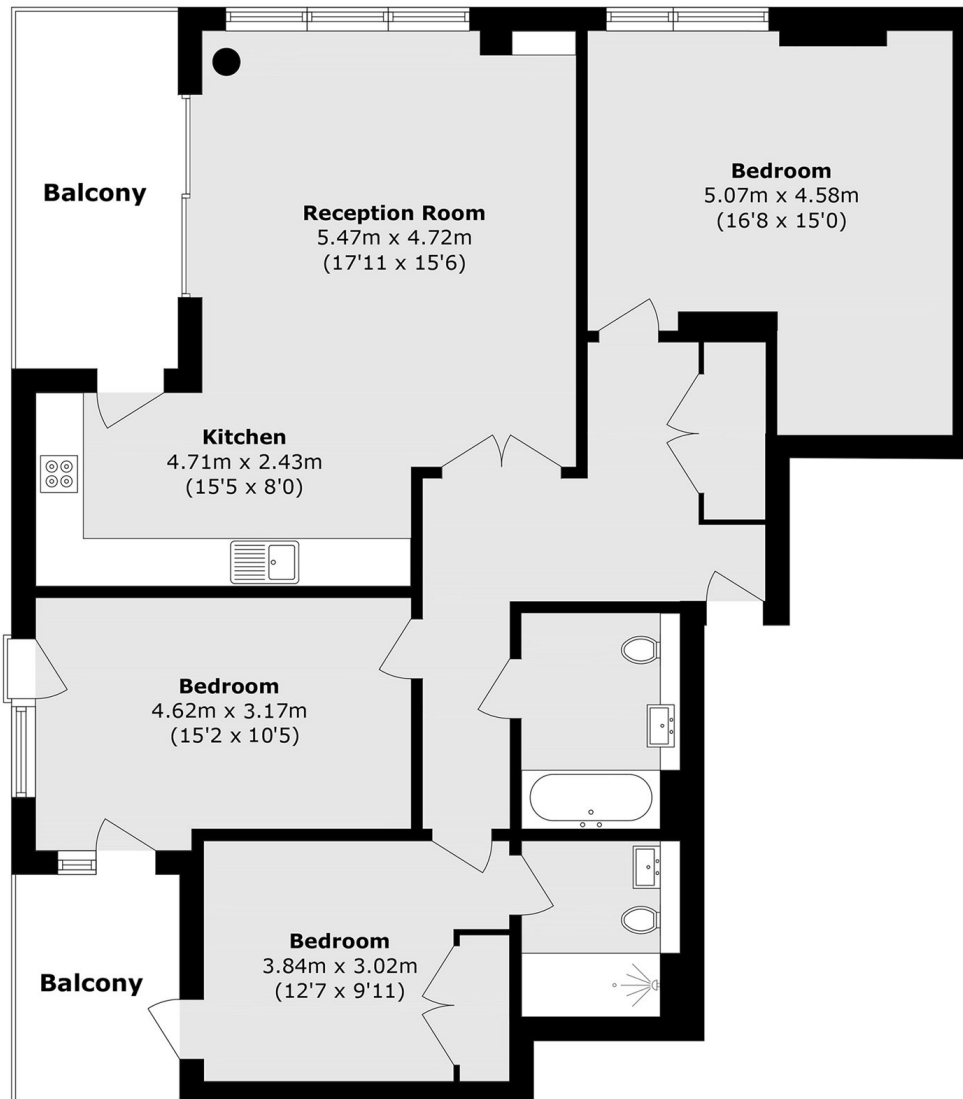
All three bedrooms are good-sized double rooms, each with ample room for additional storage, whilst the master and second bedroom both have access to the smaller of the two balconies, with the master also benefitting from an en-suite shower room. A guest bathroom is conveniently accessed from the hallway..

The main living space is a particularly generous size with ample room for dining and a separate seating area, leading directly out onto the larger balcony; a perfect space for entertaining.

Globe View House is a high spec 2014 development, benefitting from a spectacular 6th floor communal terrace and an on-site concierge, plus lift access and secure entry.



Blackfriars Road,
London, SE1



Total area (approx.): 108.9 sq. m (1172.1 sq. ft)

Balcony Total (approx.): 14.6 sq. m (157.1 sq. ft)