



## Crooms Hill, SE10

£900,000

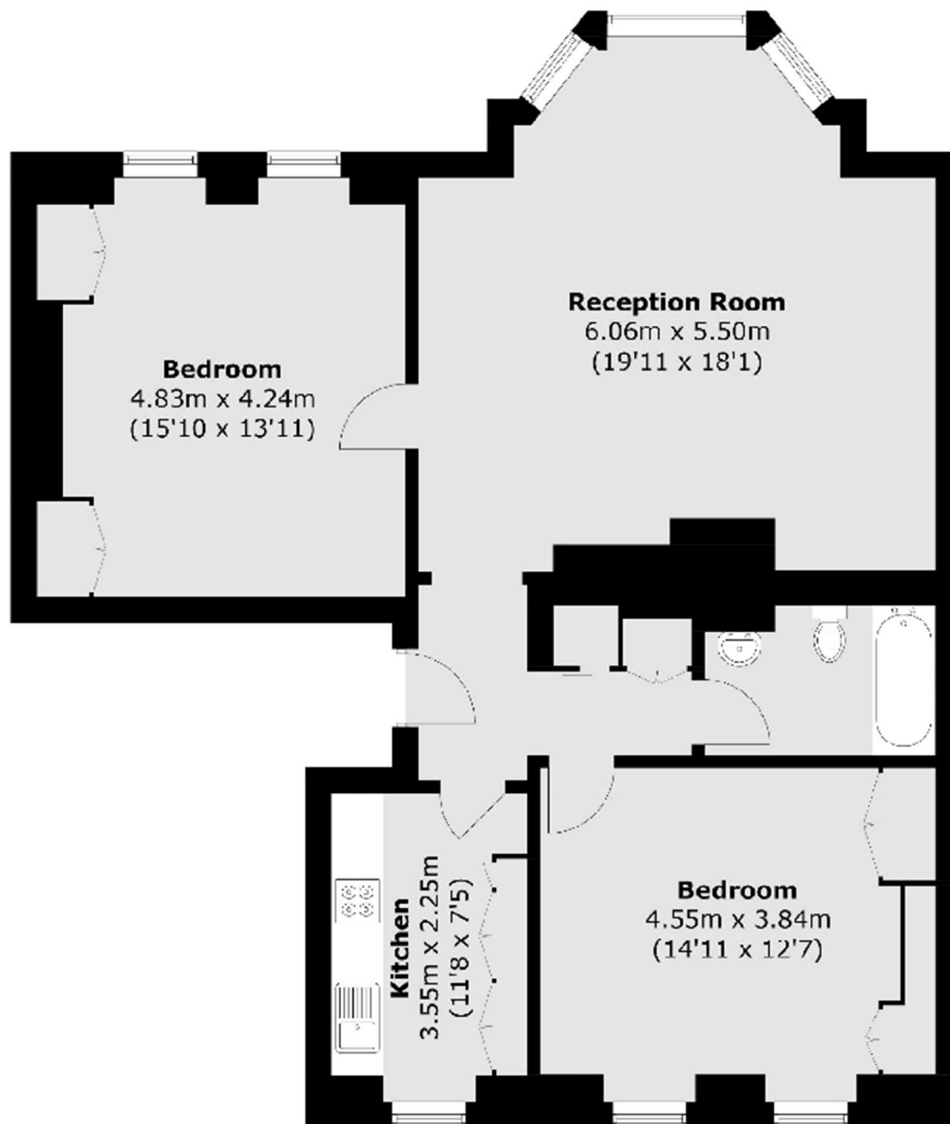
A rare opportunity to buy an immaculate two double bedroom period property on the sought after Crooms Hill, SE10. This home features unique detailing and boasts original fire places, detailed coving, high ceilings and unrestricted direct views of Greenwich Park. The interior boasts elegance from modern furniture and fittings which compliments the original features a period home offers.

Crooms Hill is often described as one of the older roads in London located moments from the centre of Greenwich and directly overlooks Greenwich Park. Being at the heart of Greenwich, transport is easily accessible offering an array of regular bus routes and train services from Greenwich, Cutty Sark and Maze Hill stations all located less than 1 mile away.

### Features

- Two Bedrooms
- One Bathroom
- First Floor Flat
- Direct view of Greenwich Park
- Sought After Location
- Finished To A High Standard

# Crooms Hill, London, SE10



Total area (approx.): 93.1 sq. m (1002.1 sq. ft)