
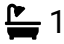





HOMES BY VICTORIA
ESTATE AGENCY

Willow Close, Fernhill Heath, Worcester, WR3 8RG

Offers Over £290,000

 3  1  1



- NO ONWARD CHAIN
- Sought-After Village Location of Fernhill Heath
- Link-Detached Three-Bedroom Family Home
- Fantastic Scope to Modernise and Personalise
- Warm Air Heating System Serviced Annually
- Spacious Lounge Diner with Garden Access
- Generous Garage with Power and Lighting
- Private, Low-Maintenance Rear Garden
- Large Driveway Providing Ample Off-Road Parking
- Move-In Ready with Potential to Create Something Special

[homesbyvictoria.co.uk](https://www.homesbyvictoria.co.uk)

victoria@homesbyvictoria | 07833 136521

FOR M HOMES MIDLANDS LIMITED trading as Homes By Victoria Company Number: 13688840 VAT no: 470190115



HOMES BY VICTORIA
ESTATE AGENCY

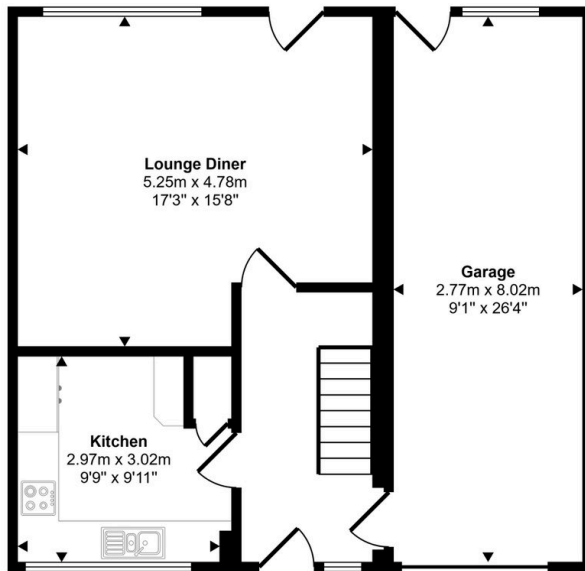


HOMES BY VICTORIA

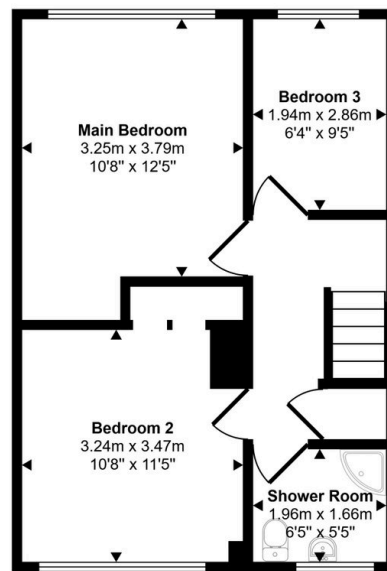
ESTATE AGENCY



Approx Gross Internal Area
109 sq m / 1178 sq ft



Ground Floor
Approx 67 sq m / 716 sq ft



First Floor
Approx 43 sq m / 463 sq ft

This floorplan is only for illustrative purposes and is not to scale. Measurements of rooms, doors, windows, and any items are approximate and no responsibility is taken for any error, omission or mis-statement. Icons of items such as bathroom suites are representations only and may not look like the real items. Made with Made Snappy 360.

Offered to the market with NO ONWARD CHAIN - Occupying a desirable position within the highly sought-after village of Fernhill Heath, this attractive three-bedroom link-detached family home presents a rare opportunity to acquire a well-maintained property with excellent potential to create a truly special long-term home.