



Queens Road

Thames Ditton, KT7 0QX

£1,100,000

A stunning four bedroom, 2 bathroom Victorian end of terrace home, thoughtfully extended and remodelled to provide accommodation for the modern family. Featuring a welcoming hall with cleverly-fitted storage and guest WC, separate sitting room to front and a superb open-plan kitchen/family room at the heart of the house, with utility room to the side and bi-folding doors opening on to a walled garden facing south-east. The first floor comprises four double bedrooms, with ensuite to the first and a separate family bathroom. All rooms enjoy excellent proportions and a high specification finish, including underfloor heating throughout, fed by an air source heat pump. Further benefits from an additional loft room, currently utilised as an office, off-street parking to front and proximity to the River Thames, Hampton Court Palace, a lovely riverside pub and Thames Ditton station and village.

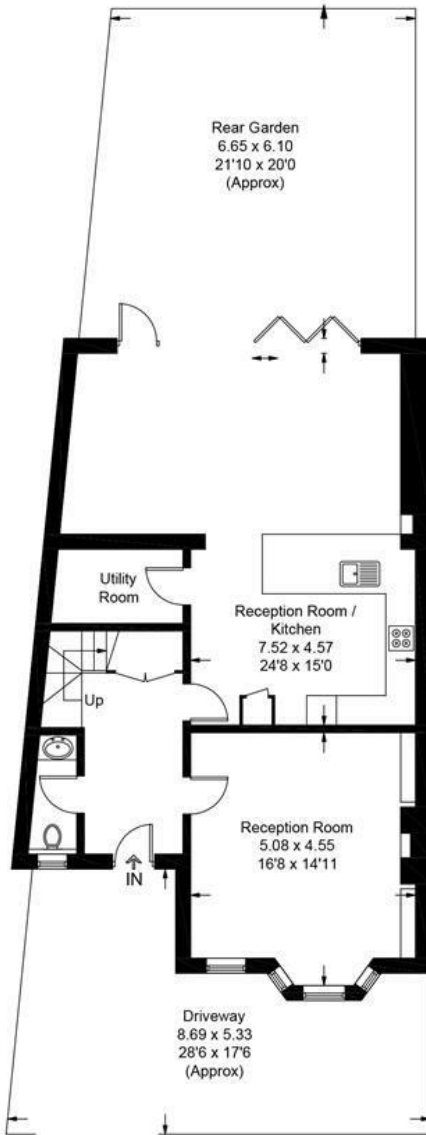
- 4 bedroom period home
- Large open plan kitchen/dining room
- Air source heat pump
- River road location
- Off street parking
- 2 bathrooms
- Utility room
- Loft space utilised as office
- Bi-folding doors to walled garden
- Close to shops, gastro pub, train station and schools

Floor Plan

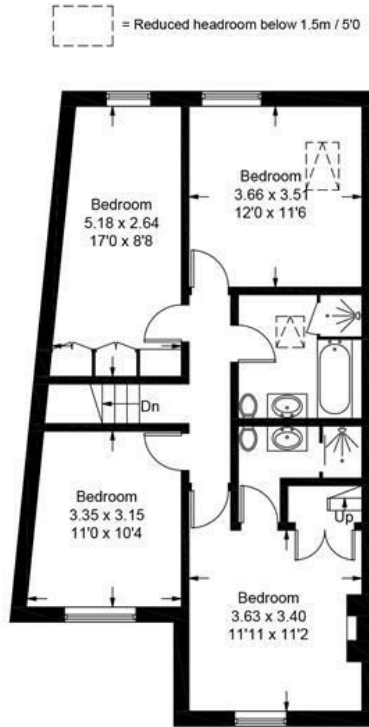
56 Queens Road

Approximate Gross Internal Area (excluding loft) = 150.5 sq m / 1620 sq ft

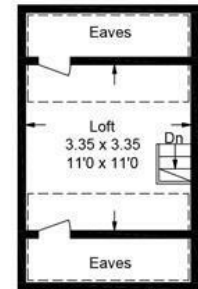
Loft = 19.4 sq m / 209 sq ft



Ground Floor



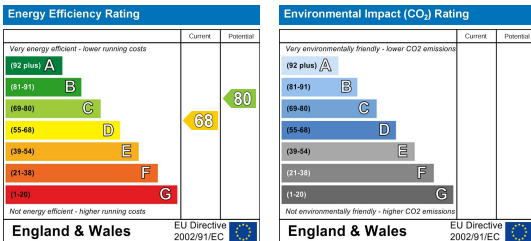
First Floor



Loft

Illustration for identification purposes only, measurements are approximate, not to scale. floorplansUsketch.com © (ID1076802)

Energy Efficiency Graph



These particulars, whilst believed to be accurate are set out as a general outline only for guidance and do not constitute any part of an offer or contract. Intending purchasers should not rely on them as statements of representation of fact, but must satisfy themselves by inspection or otherwise as to their accuracy. No person in this firm's employment has the authority to make or give any representation or warranty in respect of the property.