



## Princes Road, SW19

£500,000

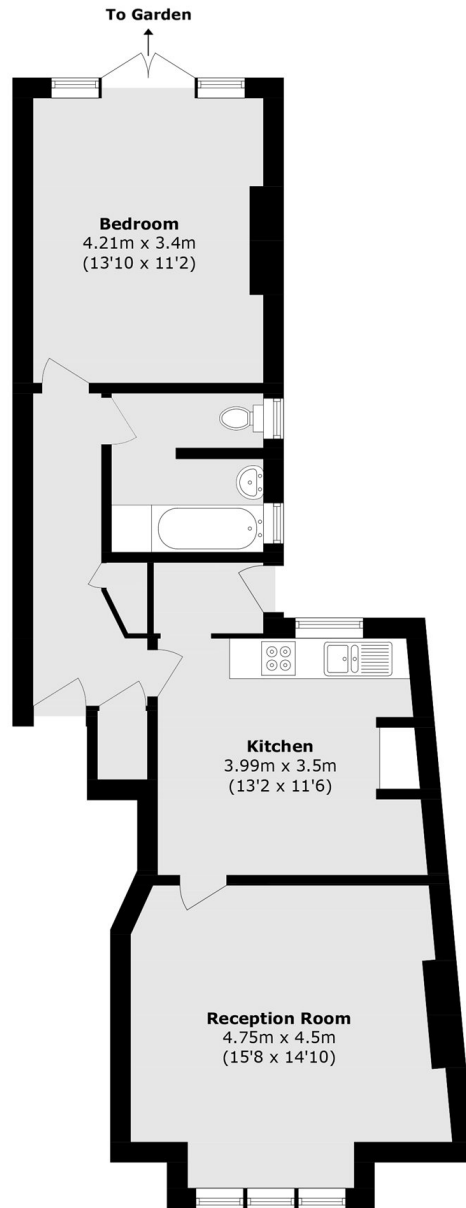
A ground floor one bedroom apartment in the South Park Gardens Conservation Area, with a private garden and eat-in kitchen, this flat is perfect for professionals & investors alike. Sold with no onward chain.

Princes Road is a short distance from both South Park Gardens and Wimbledon Broadway with its array of shops, restaurants and bars along with the variety of transport links.

### Features

- One Bedroom
- One Bathroom
- Eat-in Kitchen
- Private Garden
- No Onward Chain
- South Park Gardens

# Princes Road, London, SW19



Total area (approx.): 62.9 sq. m (677.1 sq. ft)