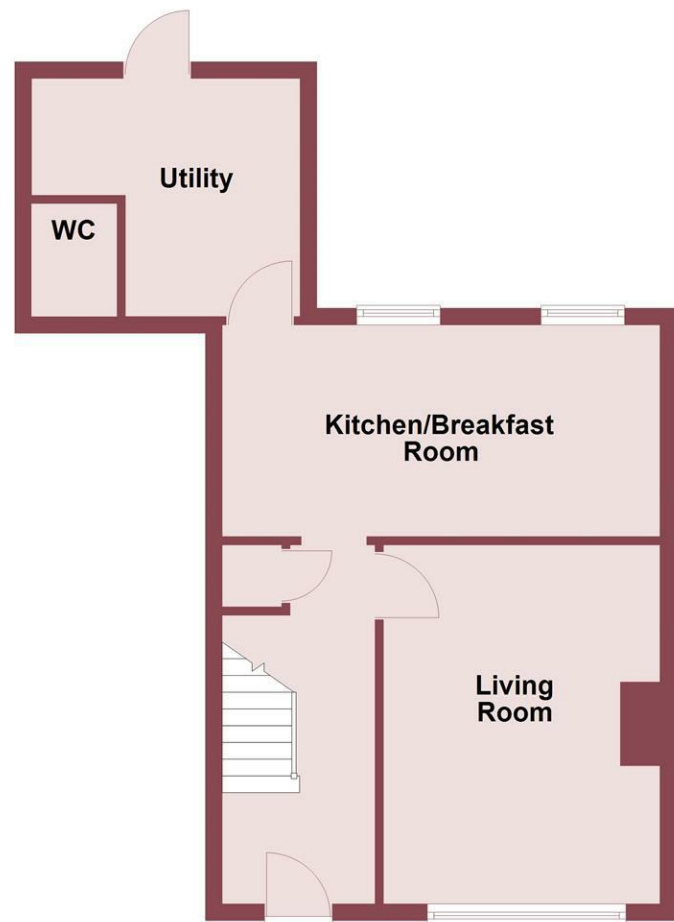
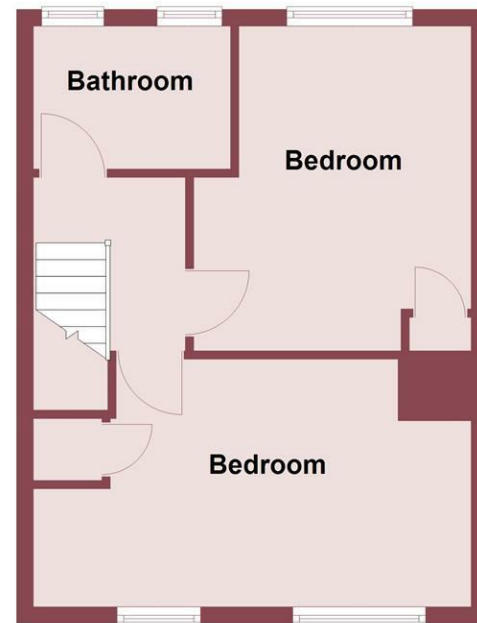




Ground Floor



First Floor



Bridgenorth Road, Wirral, CH61 8SG

Offers Over £200,000

🛏️ 2 Bedroom 🛋️ 1 Reception 🚿 1 Bathroom 📊 E

Two Bed End Terrace - Perfect First Time Buy - Handy Pensby Location - Private Rear Garden

It is with great pleasure that Hewitt Adams offer to the market this two bed end terrace property on Bridgenorth Road in Pensby. Located near to local shops and amenities with handy bus links only a stones throw away.

In the opinion of the agent, this property would be ideally suited to a first time buyer who is looking to jump onto the property ladder and put their own stamp on things.

In brief the property affords: hall, living room, breakfast kitchen, utility, W.C. Upstairs there are two bedrooms and a bathroom.

To the front of the property there is driveway parking for one car with the potential to widen the driveway for a further vehicle (subject to necessary consents). At the rear, a well maintained garden laid to lawn and patio.

Call Hewitt Adams today to view your new home!

Front Entrance

Into:

Hall

Radiator, power point, stairs to first floor

Living Room

14'0" x 10'10" (4.29 x 3.31)

Double glazed window, radiator, power points

Breakfast Kitchen

8'3" x 17'2" (2.53 x 5.24)

Base units, inset sink, integral oven and gas hob, space for fridge, space and plumbing for dishwasher, breakfast bar

Utility

9'4" x 10'6" (max) (2.85 x 3.21 (max))

Space and plumbing for washing machine, space for additional white goods, radiator, door to rear

W.C.

4'4" x 3'4" (1.34 x 1.04)

W.C, wash hand basin

First Floor

Bedroom

9'8" x 17'2" (max) (2.96 x 5.24 (max))

Double glazed windows with electric blinds, radiator, power points

Bedroom

12'8" x 10'10" (max) (3.88 x 3.32 (max))

Double glazed window, radiator, power points

Bathroom

5'7" x 7'7" (1.71 x 2.33)

Comprising bath with shower above, W.C, wash basin vanity unit, part tiled, radiator, double glazed window

Externally

Front - parking for one car

Rear - a well maintained, private rear garden laid to lawn and patio

