

shepherds
A better home
moving experience



6 The Mansion

Hertford, SG13 8FJ

Guide Price £400,000



6 The Mansion

Hertford, SG13 8FJ

Set within the sought-after Balls Park Estate, this elegant one-bedroom apartment offers a unique blend of period charm and modern comfort. Located in The Mansion, this luxurious home boasts high ceilings, grand windows, and picturesque views across the beautifully landscaped grounds.

The spacious open-plan kitchen and dining area is perfect for entertaining, featuring an abundance of natural light and a seamless flow into the large living room, where stunning period details create a sense of timeless sophistication.

The generous bedroom offers a peaceful retreat, while the stylish bathroom is finished to a high standard.

Offered chain free, this exceptional home also benefits from an allocated parking space. Surrounded by private parkland, yet within easy reach of Hertford's vibrant town centre and excellent transport links, this home offers the best of both worlds-historic elegance and contemporary living.

Contact us today to arrange a viewing.



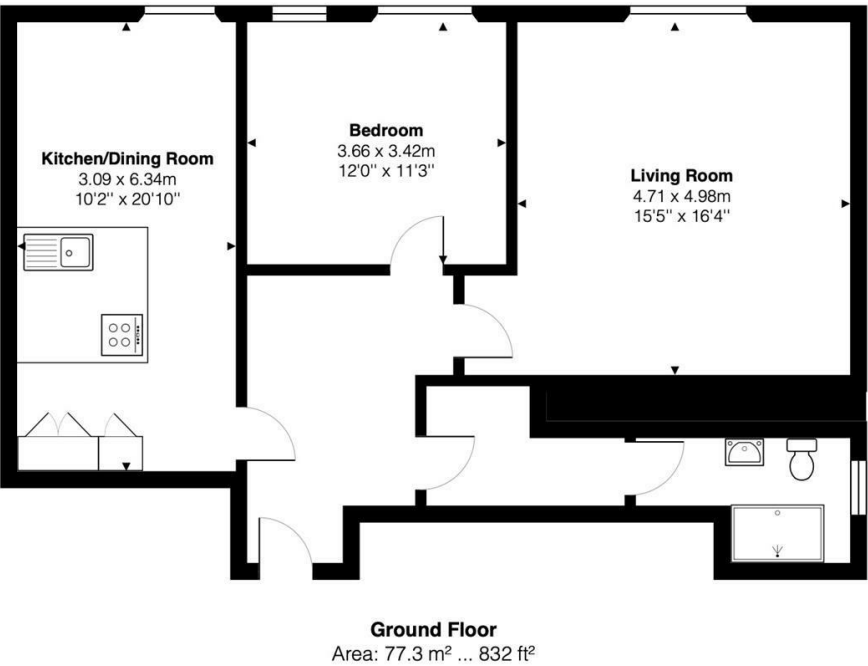


- **Chain Free** – A hassle-free purchase with no onward chain.
- **Prestigious Location** – Set within the historic and sought-after Balls Park Estate.
- **Grand Interiors** – High ceilings, large windows, and stunning period features.
- **Spacious Living** – A large open-plan kitchen diner and generous living room.
- **Beautiful Views** – Overlooking the Mansion's landscaped grounds.
- **Modern Comforts** – A stylish and well-appointed bathroom.
- **Excellent Connectivity** – Close to Hertford town centre, shops, restaurants, and transport links.

Tenure;
 Leasehold - 160 years remaining
 Service Charge - £4,962.51 per annum
 Ground Rent - £250 per annum



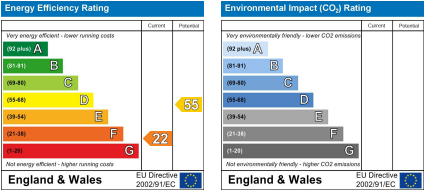
Floor Plan



Viewing

Please contact Shepherds of Hertford on 01992 551955 if you wish to arrange a viewing appointment for this property or require further information.

Energy Performance Graph



These particulars, whilst believed to be accurate are set out as a general outline only for guidance and do not constitute any part of an offer or contract. Intending purchasers should not rely on them as statements of representation of fact, but must satisfy themselves by inspection or otherwise as to their accuracy. No person in this firms employment has the authority to make or give any representation or warranty in respect of the property.

Riverside House, 6 Millbridge, Hertford, SG14 1PY
Tel: 01992 551955 Email: enquiries@shepherdsofhertford.co.uk