



Hampton House, Michael Road

, LONDON SW6 2RL

- Parking Space Available
- 25m swimming pool and vitality pool
- Games room and virtual golf room
- Private meeting and dining rooms
- Secure cycle storage
- Fully equipped gym and fitness studios
- Spa with steam room and sauna
- Two cinema rooms
- Residents' lounge with landscaped atrium courtyard
- 24-hour concierge service

£1,500,000 Leasehold

Local Authority **Hammersmith
And Fulham**
Council Tax Band **G**
EPC Rating **B**
1033.00 sq ft



A1.1.1.02

- 2 bedroom apartment
- Floor 1
- 96.5 sq m / 1038 sq ft

LIVING/DINING/KITCHEN

4.23m x 9.72m 13'11" x 31'11"

MASTER BEDROOM

3.40m x 4.14m 11'2" x 13'7"

DRESSING AREA

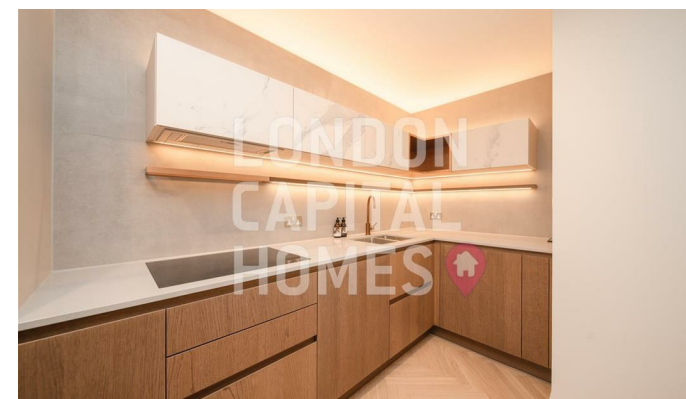
1.06m x 1.59m 3'6" x 5'3"

BEDROOM 2

3.99m x 3.05m 13'1" x 10'0"

TERRACE

14.7 sq m 158 sq ft



London Office Office

Spaces Victoria, 25 Wilton Road, Pimlico,
London, SW1V 1LW

Contact

020 3084 3094
XL@londonvictoriagroups.co.uk
www.londonvictoriagroups.co.uk

Agents Note: Whilst every care has been taken to prepare these particulars, they are for guidance purposes only. All measurements are approximate and for general guidance purposes only and whilst every care has been taken to ensure accuracy, they should not be relied upon and potential buyers/tenants are advised to recheck the measurements.