



Cairnfield Avenue, NW2

£1,250,000

An impressive detached family home extending to approximately 3,063 sq ft, offering generous and versatile living accommodation ideal for modern family life. This substantial home boasts seven bedrooms, four bathrooms, a large private garden, a conservatory, a large store, and a utility room.

Cairnfield Avenue is situated just moments from an array of amenities and the popular 86 acre Gladstone Park. The North Circular (A406) is located nearby, connecting to the M1 motorway and the A41, offering easy access in and out of London.

Features

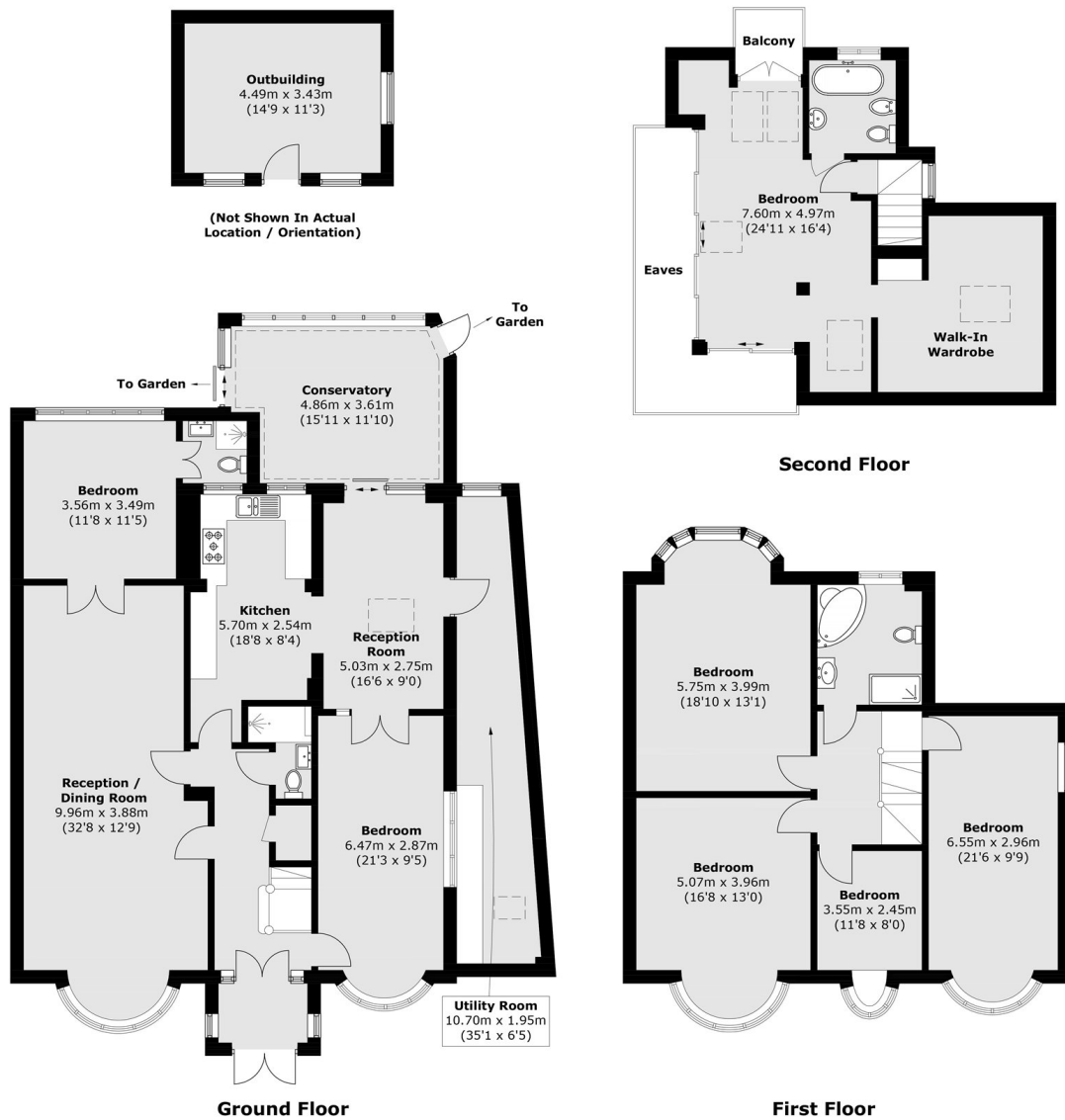
- Detached Family Home
- Gated Entrance
- Seven Bedrooms
- Four Bathrooms
- Outbuilding
- Private Parking



Cairnfield Avenue, NW2



Cairnfield Avenue, London, NW2



Approx Internal Area: 284.6 sq. m (3,063.4 sq. ft)
(Excluding Eaves)

Outbuilding: 15.5 sq. m (166.8 sq. ft)

Balcony: 2.3 sq. m (24.7 sq. ft)