



St. Georges Circus, SE1

£3,350 Per calendar month

A very high spec furnished modern apartment with an open plan living room & kitchen, winter garden, 2 double bedrooms, 2 bathrooms (including wet room). The property has ample storage, 24hr concierge, residents' lounge, terrace & gym. Available for long let.

Blackfriars Circus is one of SE1's premier modern developments, on Blackfriars Road, with easy access to Southwark, Waterloo, Waterloo East and the Southbank. Blackfriars Station and the City are within walking distance.

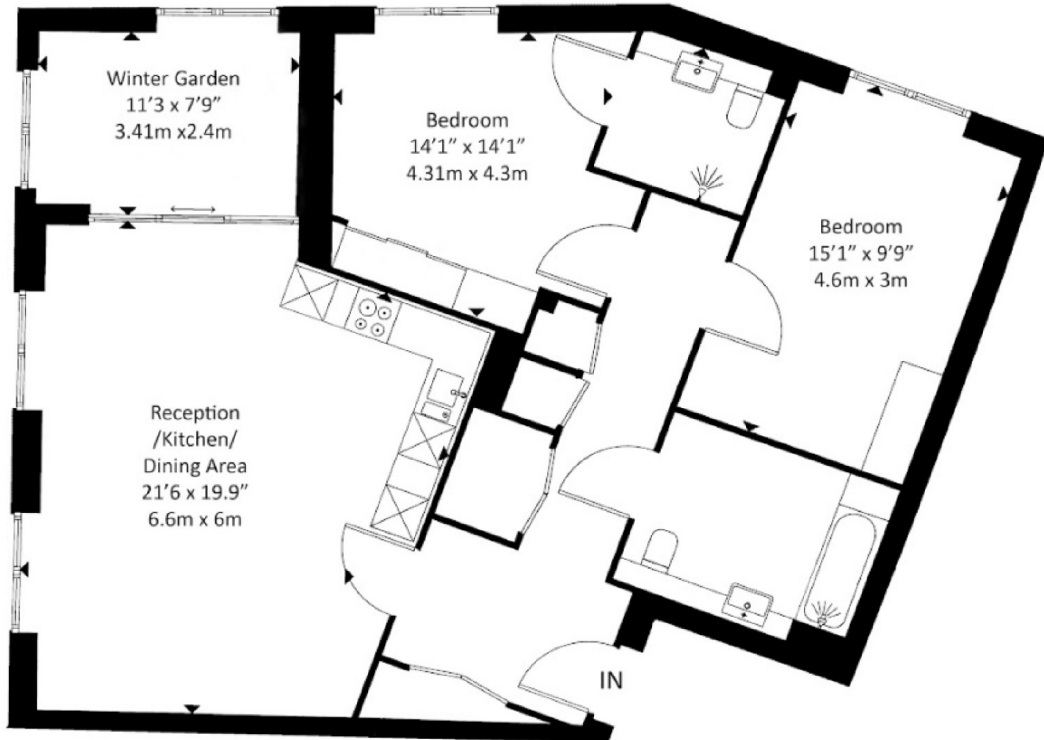
Features

- High Spec Apartment
- Winter Garden
- 24 Hour Concierge
- Residents' Gym
- Residents' Lounge
- 2 bedrooms, 2 Bathrooms

St. Georges Circus, London, SE1

Dexters

Delphini Apartments SE1
Gross Internal Area:
99 Sq.m. - 1065 Sq.ft.



Prepared for Dexters Estate Agents www.dexters.co.uk/property-lettings
Whilst every attempt has been made to ensure the accuracy of this Lettings floor plan measurements of doors, windows, rooms & Sq.footage are approximate. For Identification Purposes only. The actual property will vary. Price on application for a 90 day Licence to use this lettings Plan ©2002/2023. Not to scale. Photography, Floorplan, Virtual tours, Inventory, Video & EPC's by www.steele.london email patricia@steele.london Tel. 07847219401

Dexters

London Bridge
54 Borough High Street
London
SE1 1XL
Lettings
020 7650 5101

Energy Rating: A. We aim to make our particulars both accurate and reliable. However they are not guaranteed; nor do they form part of an offer or contract. If you require clarification on any points then please contact us, especially if you're traveling some distance to view. Please note that appliances and heating systems have not been tested and therefore no warranties can be given as to their good working order.



dexters.co.uk