



**pa** peter  
alan

## Manorbier Close, offers in excess of £230,000

- No Chain
- Bungalow
- Sought After Location
- Local Amenities
- Local Transport Links
- EPC Rating: D



**pa** peter  
alan

 2  1  1

**pa** peter  
alan

01495 231199  
blackwood@peteralan.co.uk



## About the property

Situated in the popular and well-established Grove Park area, this attractive two-bedroom semi-detached bungalow offers comfortable and well-proportioned accommodation, ideal for downsizers, first-time buyers, or those seeking single-level living in a convenient location.

The property features two generously sized bedrooms, both benefiting from ample natural light and flexible space for bedroom furniture or home working. The bright and welcoming lounge/diner provides a versatile living area, perfect for relaxing or entertaining, with plenty of room for both seating and dining arrangements. Adjacent to this is a well-appointed kitchen offering a practical layout with good storage and worktop space, ideal for everyday cooking.

A modern shower room completes the internal accommodation, fitted with contemporary fixtures and designed for ease of use.

Externally, the bungalow benefits from a private driveway providing off-street parking, adding convenience and security. To the rear, the flat garden offers a low-maintenance outdoor space, ideal for enjoying warmer months, gardening, or outdoor seating, with scope to personalise to suit individual tastes.



**pa** peter  
alan

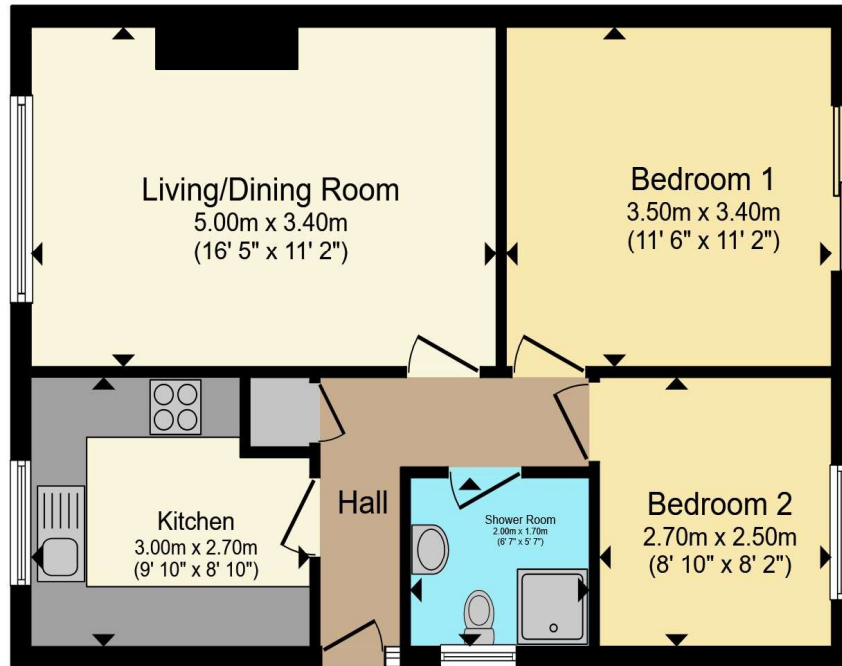
## Accommodation

Driveway

01495 231199

blackwood@peteralan.co.uk

## Floorplan



Total floor area 53.3 m<sup>2</sup> (574 sq.ft.) approx

This floor plan is for illustrative purposes only. It is not drawn to scale. Any measurements, floor areas (including any total floor area), openings and orientation are approximate. No details are guaranteed, they cannot be relied upon for any purpose and they do not form part of any agreement. No liability is taken for any error, omission or misstatement. A party must rely upon its own inspection(s). Powered by [www.propertybox.io](http://www.propertybox.io)



## Important Information

Note while we endeavour to make our sales details accurate and reliable, if there is any point which is of particular interest to you, please contact the office and we will be pleased to confirm the position for you. We have not personally tested any apparatus, equipment, fixtures, fittings or services and cannot verify they are in working order or fit for their purposes. Nothing in these particulars is intended to indicate that carpets or curtains, furnishings or fittings, electrical goods (whether wired or not). Gas fires or light fittings or any other fixtures not expressly included form part of the property offered for sale. This computer generated Floorplan, if applicable, is intended as a general guide to the layout and design of the property. It is not to scale and should not be relied upon for dimensions. Tenure: We cannot confirm the tenure of the property as we have not had access to the legal documents. The buyer is advised to obtain verification from their solicitor or surveyor.

Peter Alan Limited is registered in England and Wales under company number 2073153, Registered Office is Cumbria House, 16-20 Hockliffe Street, Leighton Buzzard, Bedfordshire, LU7 1GN. VAT Registration Number is 500 2481 05. For activities relating to regulated mortgages and non-investment insurance contracts, Peter Alan Limited is an appointed representative of Connells Limited which is authorised and regulated by the Financial Conduct Authority. Connells Limited's Financial Services Register number is 302221. Most buy-to-let

