

WILKINSON

SALES • LETTINGS • MANAGEMENT

£425,000

Courtney Close, Stonehills, Tewkesbury, GL20



 4

Bedrooms

 2

Bathrooms

101 High Street, Tewkesbury, Gloucestershire, GL20 5JZ |
Info@wilkinsonsIm.co.uk

01684 367736



- Detached House Nestled in a Quiet Cul de Sac
- Lounge
- Dining Room with Bifold Doors out to Rear Garden
- Kitchen with Access to Rear Garden
- Downstairs WC
- Four Bedrooms
- Refitted Ensuite & Refitted Family Bathroom
- SOUTH-WESTERLY Facing Rear Garden with Side Access
- Integral Garage with Power/Lighting & Driveway Parking
- Replaced UPVC Double Glazing Throughout
- Gas Central Heating with Replaced Combination Boiler
- Attractive Front Garden

Wilkinson SLM are delighted to present to the market this exceptional four-bedroom detached residence, ideally situated in the highly sought-after area of Stonehills. Tucked away within a quiet cul-de-sac, this impressive home offers generous and versatile living accommodation. Upon arrival, an attractive front garden creates an inviting first impression, leading to the entrance hall where a conveniently located downstairs WC can be found. To the right, the spacious lounge provides a welcoming and comfortable living space, enhanced by a large archway that seamlessly connects to the dining room. The dining room benefits from bifold doors that open out onto the beautifully maintained, SOUTH-WESTERLY facing rear garden. The kitchen is accessed via the dining room with a range of base and wall units, complemented by a built in electric oven and gas hob. A rear door offers direct access to the garden, adding to the home's practicality. The tiered rear garden is a standout feature, enjoying a desirable South-Westerly aspect. It includes a patio seating area with steps leading up to a lawn bordered by beautiful mature shrubs and planting. Additional patio areas can be found to either side of the property, one housing a useful storage shed and the other providing gated side access to the front. Upstairs, the first floor accommodates four bedrooms. The principal bedroom benefits from a refitted ensuite shower room and a built in triple wardrobe. Bedrooms two and three also feature built in double wardrobes, offering excellent storage solutions. A refitted family bathroom and a handy storage cupboard complete the first floor. Further enhancing this wonderful home are newly installed UPVC double glazing throughout and a recently replaced combination boiler. An integral garage with power and lighting, along with driveway parking, adds further convenience. This is a fantastic opportunity to acquire a spacious and well presented family home in a prime location. Early viewing is highly recommended to fully appreciate all that this property has to offer.

Lounge 16' 5" x 10' 5" (5.00m x 3.17m) maximum measurements

Dining Room 8' 11" x 10' 5" (2.72m x 3.17m)

Kitchen 8' 11" x 10' 11" (2.72m x 3.33m)

Bedroom One 14' 4" x 8' 9" (4.37m x 2.67m) width to ensuite

Ensuite 5' 4" x 5' 8" (1.63m x 1.73m)

Bedroom Two 9' 0" x 10' 5" (2.74m x 3.17m)

Bedroom Three 8' 11" x 9' 0" (2.72m x 2.74m) maximum measurements

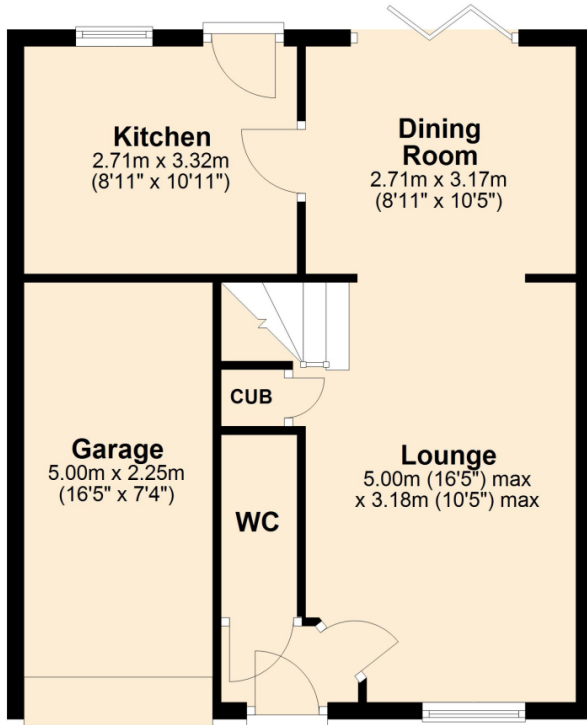
Bedroom Four 8' 0" x 6' 11" (2.44m x 2.11m)

Bathroom 8' 2" x 5' 0" (2.49m x 1.52m)

Garage 16' 5" x 7' 4" (5.00m x 2.24m)

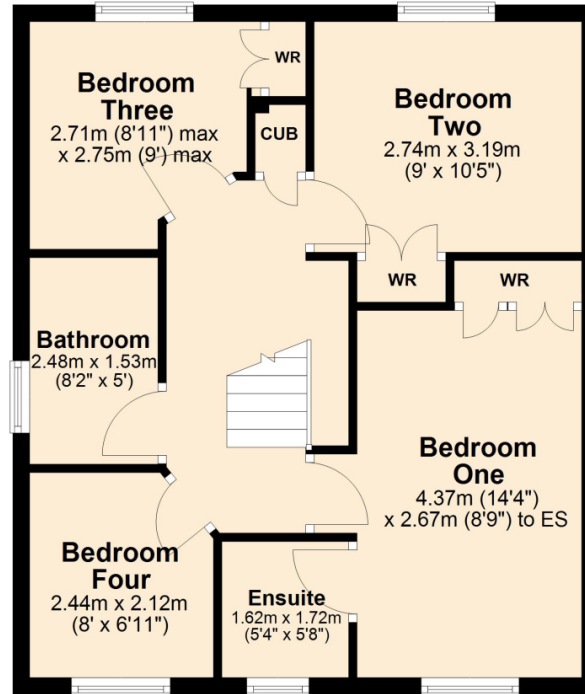
Ground Floor

Approx. 51.3 sq. metres (552.0 sq. feet)




First Floor

Approx. 51.3 sq. metres (552.0 sq. feet)



Total area: approx. 102.6 sq. metres (1103.9 sq. feet)

Energy Efficiency Rating

	Current	Potential
Very energy efficient - lower running costs		
(92+) A		
(81-91) B		
(69-80) C	76	80
(55-68) D		
(39-54) E		
(21-38) F		
(1-20) G		
Not energy efficient - higher running costs		
England, Scotland & Wales		EU Directive 2002/91/EC 

Address: Courtney Close, Stonehills, Tewkesbury, GL20

