

GREEN & CO



£269,950 20 Windsor Street, Grove, Wantage, Oxfordshire, OX12 0FZ, UK

Freehold



GREEN & CO

£269,950 Windsor Street, Grove

Council Tax Band B

A well-presented modern two-bedroom semi-detached home, ideally positioned within a popular residential area and conveniently located close to local schools and everyday amenities. The contemporary accommodation is thoughtfully arranged and comprises a welcoming entrance hall, a stylish fitted kitchen with integral appliances, and an open-plan sitting/dining room with doors opening directly onto the rear garden, perfect for both relaxing and entertaining. A convenient cloakroom with W.C completes the ground floor. Upstairs, the property offers two generous double bedrooms and a superbly appointed family bathroom finished to a high standard. Externally, the home benefits from a fully enclosed, low-maintenance rear garden ideal for outdoor enjoyment, along with two allocated parking spaces to the front.

what3words. [w3w.co/reinvest.outhouse.croaking](https://www.what3words.com/reinvest.outhouse.croaking).

Ofcom. For broadband speeds and mobile coverage, visit <https://www.ofcom.org.uk/>. If Rightmove has deleted this link, please click on the attached PDF brochure and follow the link provided there.

Utilities. All mains services are connected.

Heating Type. Gas-fired central heating to radiators.

Estate Service Charge. Estate Rent Fee of £134.16 and Estate Service Charge of £103.96. We have been informed that the Service Charge is not payable until the estate reaches completion in 4/5 years.

Location. The village of Grove lays approx. 13 miles south-west of Oxford where the



Green & Co. 33 Market Place Wantage OX12 8AL; t. 01235763562; e.sales@greenand.co.uk



Thames Valley meets the Berkshire Downs and is well situated for all the main travel links, with the A338 providing easy access to the A34, M40, M4, plus the rail links in Oxford, Didcot, and Swindon. Its favoured position gives the village a peaceful aspect and it stands amid traditional farming areas. Despite this, Grove has grown, in post-war years, from a small, self-sufficient hamlet to a thriving modern community with shops and schools to meet the needs of its newcomers. The extensive acreage given over to housing is designed for ease of access to the modern schools in comparative safety, along with a network of walkways, only seldom needing to cross roads or encounter traffic. With more comprehensive facilities available in nearby Wantage, Grove offers much more than the average village.

Other Material Information. Brick and timber frame construction. Planning Permission has been granted for 1500 dwellings and associated infrastructure on the Grove Airfield and thereabouts.

Green & Co. 33 Market Place Wantage OX12 8AL; t. 01235763562; e.sales@greenand.co.uk

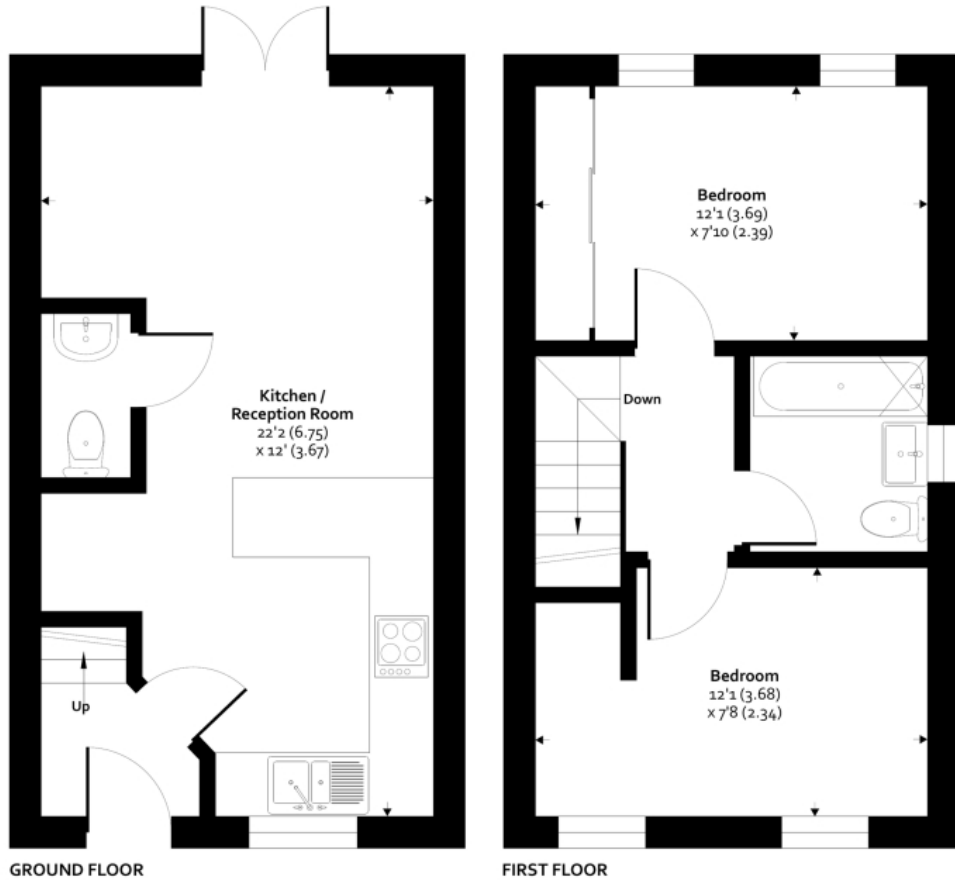




GREEN & CO

20 Windsor Street, Grove, Wantage, OX12 0FZ

Approximate Area = 546 sq ft / 50.7 sq m



Floor plan produced in accordance with RICS Property Measurement 2nd Edition, Incorporating International Property Measurement Standards (IPMS2 Residential). © ricscom 2026. Produced for Green & Co. REF: 1418892



Score	Energy rating	Current	Potential
92+	A		97 A
81-91	B	82 B	
69-80	C		
55-68	D		
39-54	E		
21-38	F		
1-20	G		

Ofcom. For broadband speeds and mobile coverage, visit <https://www.ofcom.org.uk/>.

SDLT. For Stamp Duty Land Tax calculations, visit <https://www.gov.uk/stamp-duty-land-tax/residential-property-rates>.

Flood Risk. To check the long-term flood risk for this property, visit <https://www.gov.uk/check-long-term-flood-risk>.

Planning. To see any planning applications that may affect this property, visit <https://www.gov.uk/search-register-planning-decisions>.

**GREEN &
CO**



Harry Goodman
01235 773 404



James Goodman
01235 773 401



Kevin Flanagan
01235 773 403

IMPORTANT - In compliance with the DMCC Act 2024, Green & Co. makes every effort to provide accurate, up-to-date information, including property tenure (Freehold/Commonhold/Leasehold), council tax band, utility types, and material restrictions or building safety issues, as made available to us. We recommend that buyers verify this information alongside their legal representative before making an offer. The details and photographs within this brochure are for guidance only and are accurate to the best of our knowledge. They do not constitute a contract or offer. Green & Co. has not tested any apparatus, equipment, or services and cannot verify that they are in working order. All measurements are approximate and any digitally enhanced images are meant to illustrate potential, not guarantee reality.